

WARM ROOFING DETAILS

STANDARD INSTALLATION DETAILS, IF INTERNAL SPREAD OF FLAME IS REQUIRED REFER BRANZ TEST REPORT AND OPINION. REQUIRES SIGN OFF FROM FIRE ENGINEER

DETAIL LIST

		<u>Revision</u>	<u>Date</u>
D 00 / 13	COVER SHEET		
D 01 / 13	RIDGE WITH PROFILED APEX	1.0	OCT 2024
D 02 / 13	RIDGE WITH NON PROFILED APEX	1.0	OCT 2024
D 03 / 13	SAWTOOTH RIDGE	1.0	OCT 2024
D 04 / 13	INTERNAL GUTTER	1.0	OCT 2024
D 05 / 13	FLUSH EAVE WITH EXTERNAL GUTTER BRACKET	1.0	OCT 2024
D 06 / 13	BARGE WITH PROFILED CLADDING	1.0	OCT 2024
D 07 / 13	PARAPET WITH TRANSVERSE APRON	1.0	OCT 2024
D 08 / 13	PARALLEL APRON	1.0	OCT 2024
D 09 / 13	ROOF STEP	1.0	OCT 2024
D 10 / 13	COLD PIPE PENETRATION	1.0	OCT 2024
D 11 / 13	SKYLIGHT PENETRATION 01	1.0	OCT 2024
D 12 / 13	SKYLIGHT PENETRATION 02	1.0	OCT 2024
D 13 / 13	TYPICAL CROSS SECTION	1.0	OCT 2024

PRE-FINISHED RIDGE CAP FLASHING

STOPENDS TO ROOF CLADDING

METALCRAFT KAHU ROOFING

NOTCHED EDGE DRESSED OVER KAHU RIBS

PRE-FINISHED SELF DRILLING/TAPPING SCREW ON EMBOSSED WASHER

FOAM CLOSURE SEALED TOP AND BOTTOM WITH BOSTIK FIRECAULK SEALANT

PRE-FINISHED SCREW WITH NEOPRENE WASHER

*KAHU MIN. ROOF PITCH = 3°

FIRE RETARDANT FOAM INFILL (EXPANDING FOAM)

MET-THERM® Batten WITH VENTILATION HOLES

PRO CLIMA TESCON NAIDECK TAPE

UNDERLAY FULLY TAPED REFER NOTE

*PIR BOARD INSULATION REFER NOTE

METALCRAFT KAHU ROOFING REVERSE LAID AND TAPED LAPS

0.55 BMT STEEL FLASHING CONTINUOUS

PRO CLIMA COMPEGO TAPE

STRUCTURAL DESIGN BY OTHERS
MINIMUM PURLIN WIDTH = 90mm

AS PER MRM CODE OF PRACTICE

CATEGORY A	CATEGORY B	CATEGORY C	CATEGORY D
LOW, MEDIUM OR HIGH WIND ZONES - ALL ROOF PITCHES	VERY HIGH WIND ZONES ROOF PITCH <8°	SED WIND ZONES UP TO 60 m/s	SED WIND ZONES UP TO 68 m/s
VERY HIGH AND EXTRA HIGH WIND ZONES WHERE THE PITCH IS EQUAL TO OR GREATER THAN 10°	EXTRA HIGH WIND ZONES -ALL ROOF PITCHES	ALL ROOF PITCH	ALL ROOF PITCH
X MIN. 130mm	MIN. 200mm	MIN. 200mm	MIN. 200mm + BAFFLE (REFER NZ MRM COP)

*FOR PIR BOARD & UNDERLAY OPTIONS REFER TO BUILDING PRODUCT INFORMATION SHEET (BPIS)
WWW.METALCRAFTGROUP.CO.NZ

PRE-FINISHED RIDGE CAP FLASHING

STOPENDS TO ROOF CLADDING

METALCRAFT KAHU ROOFING

NOTCHED EDGE DRESSED OVER KAHU RIBS

PRE-FINISHED SELF DRILLING/TAPPING SCREW ON EMBOSSED WASHER

FOAM CLOSURE SEALED TOP AND BOTTOM WITH BOSTIK FIRECAULK SEALANT

PRE-FINISHED SCREW WITH NEOPRENE WASHER

*KAHU MIN. ROOF PITCH = 3°

FIRE RETARDANT FOAM INFILL (EXPANDING FOAM)

MET-THERM® Batten WITH VENTILATION HOLES

PRO CLIMA TESCON NAIDECK TAPE

UNDERLAY FULLY TAPED REFER NOTE

*PIR BOARD INSULATION REFER NOTE

METALCRAFT KAHU ROOFING REVERSE LAID AND TAPED LAPS

0.55 BMT STEEL FLASHING CONTINUOUS

STRUCTURAL DESIGN BY OTHERS
MINIMUM PURLIN WIDTH = 90mm

*FOR PIR BOARD & UNDERLAY OPTIONS REFER TO BUILDING PRODUCT INFORMATION SHEET (BPIS)
WWW.METALCRAFTGROUP.CO.NZ



DISCLAIMER:
These drawings are the copyright of Metalcraft Roofing and all details are to be used for indicative purposes only. The Architect / Designer should consult all of Metalcraft Roofing's MET-THERM® product literature and also the NZMRM code of practice and all relevant building codes. The Architect/ Designer must satisfy themselves that the chosen MET-THERM® system and relevant details are suitable for their specific project. Metalcraft Roofing reserves the right to alter or upgrade these details at any time without prior notice.

AS PER MRM CODE OF PRACTICE			
CATEGORY A	CATEGORY B	CATEGORY C	CATEGORY D
LOW, MEDIUM OR HIGH WIND ZONES - ALL ROOF PITCHES	VERY HIGH WIND ZONES ROOF PITCH <8°	SED WIND ZONES UP TO 60 m/s	SED WIND ZONES UP TO 68 m/s
VERY HIGH AND EXTRA HIGH WIND ZONES WHERE THE PITCH IS EQUAL TO OR GREATER THAN 10°	EXTRA HIGH WIND ZONES -ALL ROOF PITCHES	ALL ROOF PITCH	ALL ROOF PITCH
X MIN. 130mm	MIN. 200mm	MIN. 200mm	MIN. 200mm + BAFFLE (REFER NZ MRM COP)

Met-Therm™ - KAHU®

Rev. 1.0

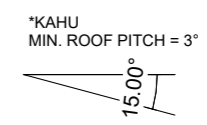
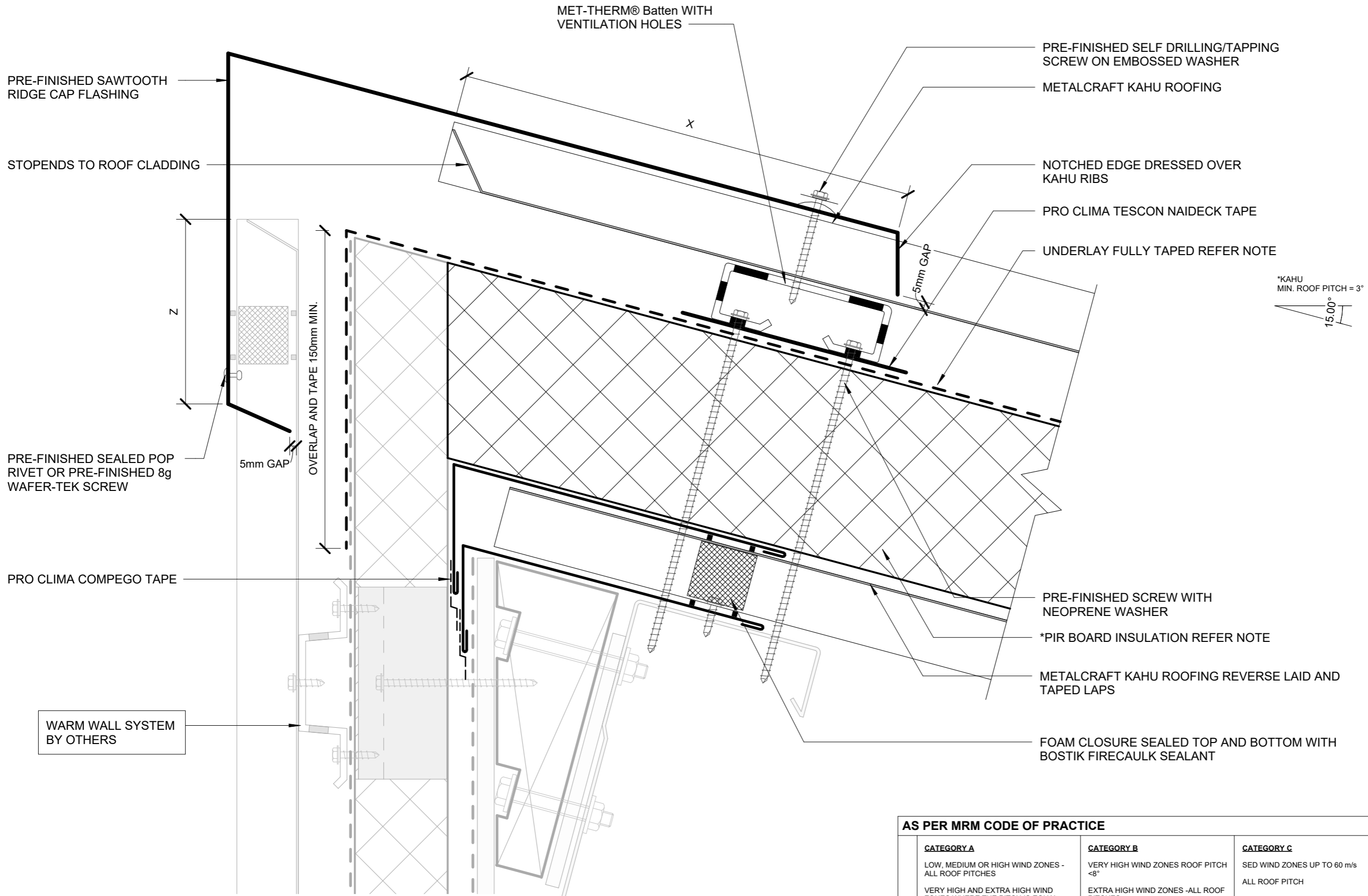
RIDGE WITH NON PROFILED APEX
WARM ROOFING DETAILS

Reference CRMTKA

Date OCT 2024

Scale 1 : 2

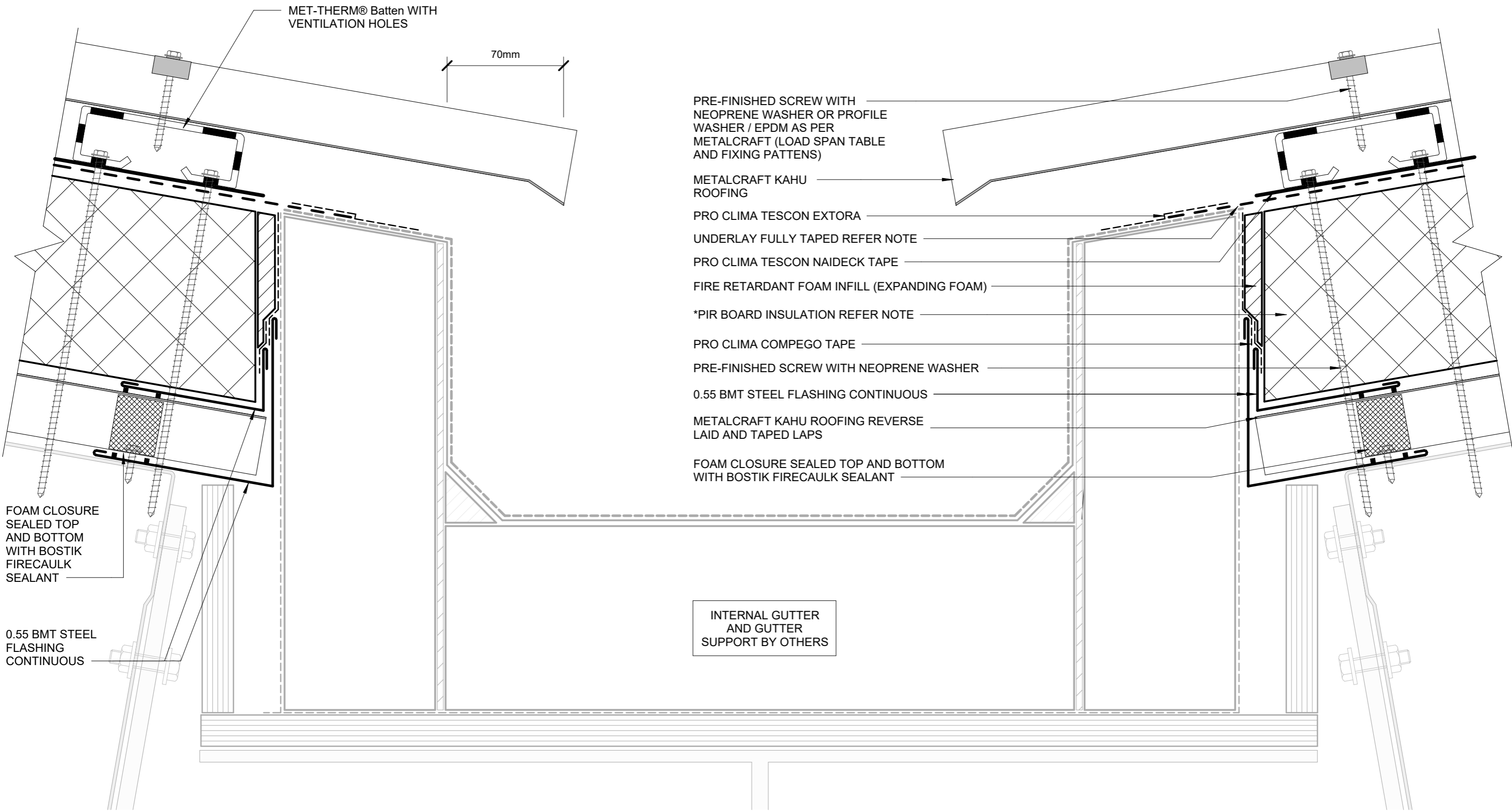
Sheet D 02 / 13



STRUCTURAL DESIGN BY OTHERS
MINIMUM PURLIN WIDTH = 90mm

AS PER MRM CODE OF PRACTICE			
CATEGORY A	CATEGORY B	CATEGORY C	CATEGORY D
LOW, MEDIUM OR HIGH WIND ZONES - ALL ROOF PITCHES	VERY HIGH WIND ZONES ROOF PITCH <8°	SED WIND ZONES UP TO 60 m/s	SED WIND ZONES UP TO 68 m/s
VERY HIGH AND EXTRA HIGH WIND ZONES WHERE THE PITCH IS EQUAL TO OR GREATER THAN 10°	EXTRA HIGH WIND ZONES -ALL ROOF PITCHES	ALL ROOF PITCH	ALL ROOF PITCH
X MIN. 130mm	MIN. 200mm	MIN. 200mm	MIN. 200mm + BAFFLE (REFER NZ MRM COP)
Z MIN. 50mm + HEM QR 75mm (VERTICALLY DOWN FACE - SMOOTH) MIN. 75mm + HEM QR 100mm (VERTICALLY DOWN FACE - PROFILED)	MIN. 75mm + HEM QR 100mm (VERTICALLY DOWN FACE - SMOOTH) MIN. 100mm + HEM QR 125mm (VERTICALLY DOWN FACE - PROFILED)	MIN. 100mm + HEMQR 125mm (VERTICALLY DOWN FACE - SMOOTH) MIN. 125mm + HEM (VERTICALLY DOWN FACE - PROFILED)	MIN. 100mm + HEMQR 125mm (VERTICALLY DOWN FACE - SMOOTH) MIN. 125mm + HEM (VERTICALLY DOWN FACE - PROFILED)

*FOR PIR BOARD & UNDERLAY OPTIONS REFER TO BUILDING PRODUCT INFORMATION SHEET (BPIS)
WWW.METALCRAFTGROUP.CO.NZ



MET-THERM® Batten WITH VENTILATION HOLES

70mm

PRE-FINISHED SCREW WITH NEOPRENE WASHER OR PROFILE WASHER / EPDM AS PER METALCRAFT (LOAD SPAN TABLE AND FIXING PATTENS)

METALCRAFT KAHU ROOFING

PRO CLIMA TESCON EXTORA

UNDERLAY FULLY TAPED REFER NOTE

PRO CLIMA TESCON NAIDECK TAPE

FIRE RETARDANT FOAM INFILL (EXPANDING FOAM)

*PIR BOARD INSULATION REFER NOTE

PRO CLIMA COMPEGO TAPE

PRE-FINISHED SCREW WITH NEOPRENE WASHER

0.55 BMT STEEL FLASHING CONTINUOUS

METALCRAFT KAHU ROOFING REVERSE LAID AND TAPED LAPS

FOAM CLOSURE SEALED TOP AND BOTTOM WITH BOSTIK FIRECAULK SEALANT

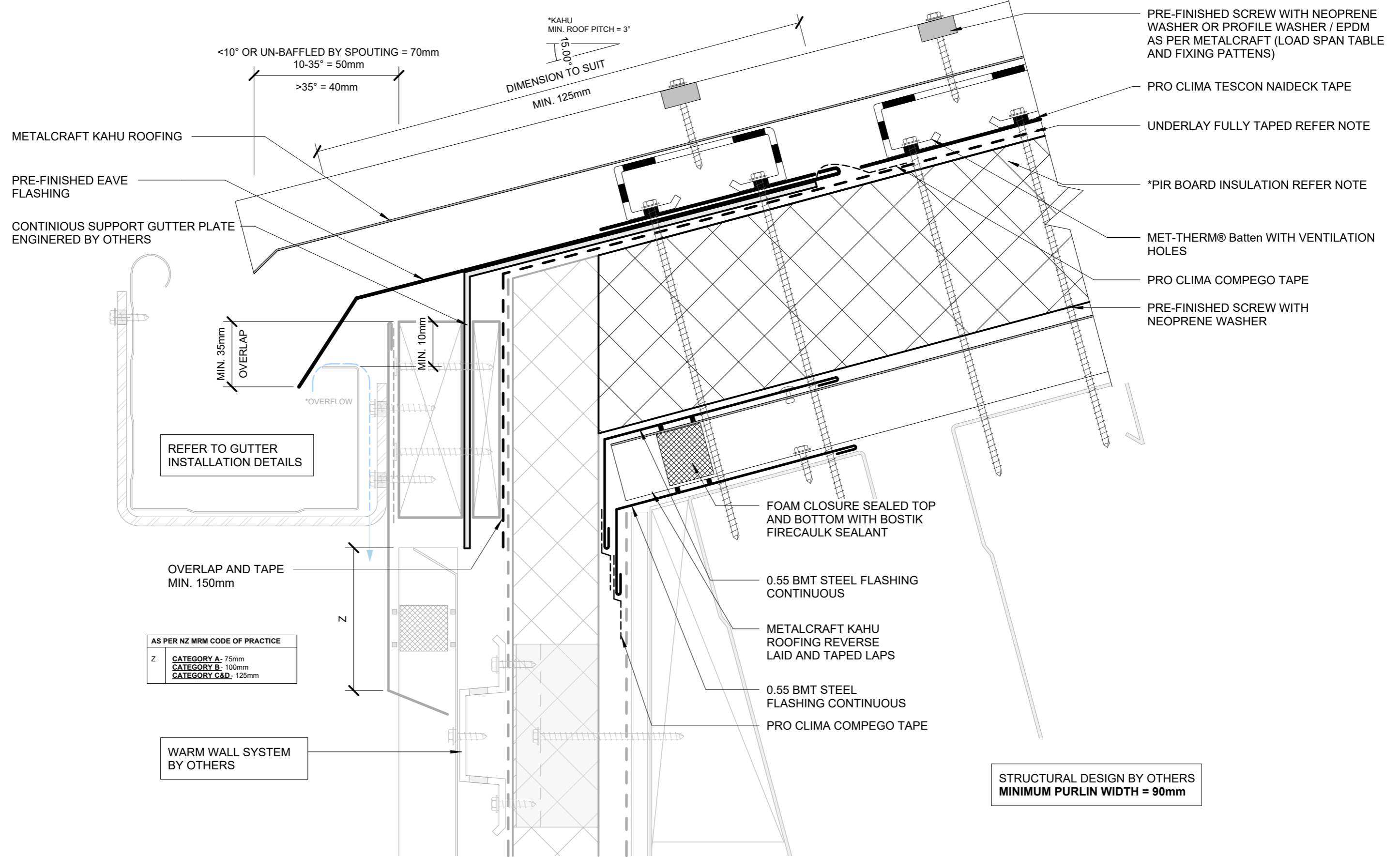
FOAM CLOSURE SEALED TOP AND BOTTOM WITH BOSTIK FIRECAULK SEALANT

0.55 BMT STEEL FLASHING CONTINUOUS

INTERNAL GUTTER AND GUTTER SUPPORT BY OTHERS

STRUCTURAL DESIGN BY OTHERS
MINIMUM PURLIN WIDTH = 90mm

*FOR PIR BOARD & UNDERLAY OPTIONS REFER TO BUILDING PRODUCT INFORMATION SHEET (BPIS) WWW.METALCRAFTGROUP.CO.NZ



*FOR PIR BOARD & UNDERLAY OPTIONS REFER TO BUILDING PRODUCT INFORMATION SHEET (BPIS)
 WWW.METALCRAFTGROUP.CO.NZ

UNDERSOAKER
FLASHING REQUIRED
FOR NZ MRM COP
CATEGORY D ONLY

PRE-FINISHED
BARGE FLASHING
PRO CLIMA TESCON
NAIDECK TAPE

PRE-FINISHED SEALED
POP RIVET OR PRE-
FINISHED 8g WAFER-
TEK SCREW

0.55 BMT SEALED STEEL
FLASHING CONTINUOUS

PRO CLIMA COMPEGO TAPE

PRE-FINISHED SCREW
WITH NEOPRENE WASHER

WARM WALL SYSTEM
BY OTHERS

PRE-FINISHED SELF DRILLING/TAPPING
SCREW ON EMBOSSED WASHER

PRE-FINISHED SCREW WITH NEOPRENE
WASHER OR PROFILE WASHER / EPDM
AS PER METALCRAFT (LOAD SPAN TABLE
AND FIXING PATTERNS)

METALCRAFT KAHU ROOFING

MET-THERM® Batten WITH
VENTILATION HOLES

UNDERLAY FULLY TAPED REFER
NOTE

*PIR BOARD INSULATION REFER NOTE

METALCRAFT KAHU ROOFING
REVERSE LAID AND TAPED LAPS

STRUCTURAL DESIGN BY OTHERS
MINIMUM PURLIN WIDTH = 90mm

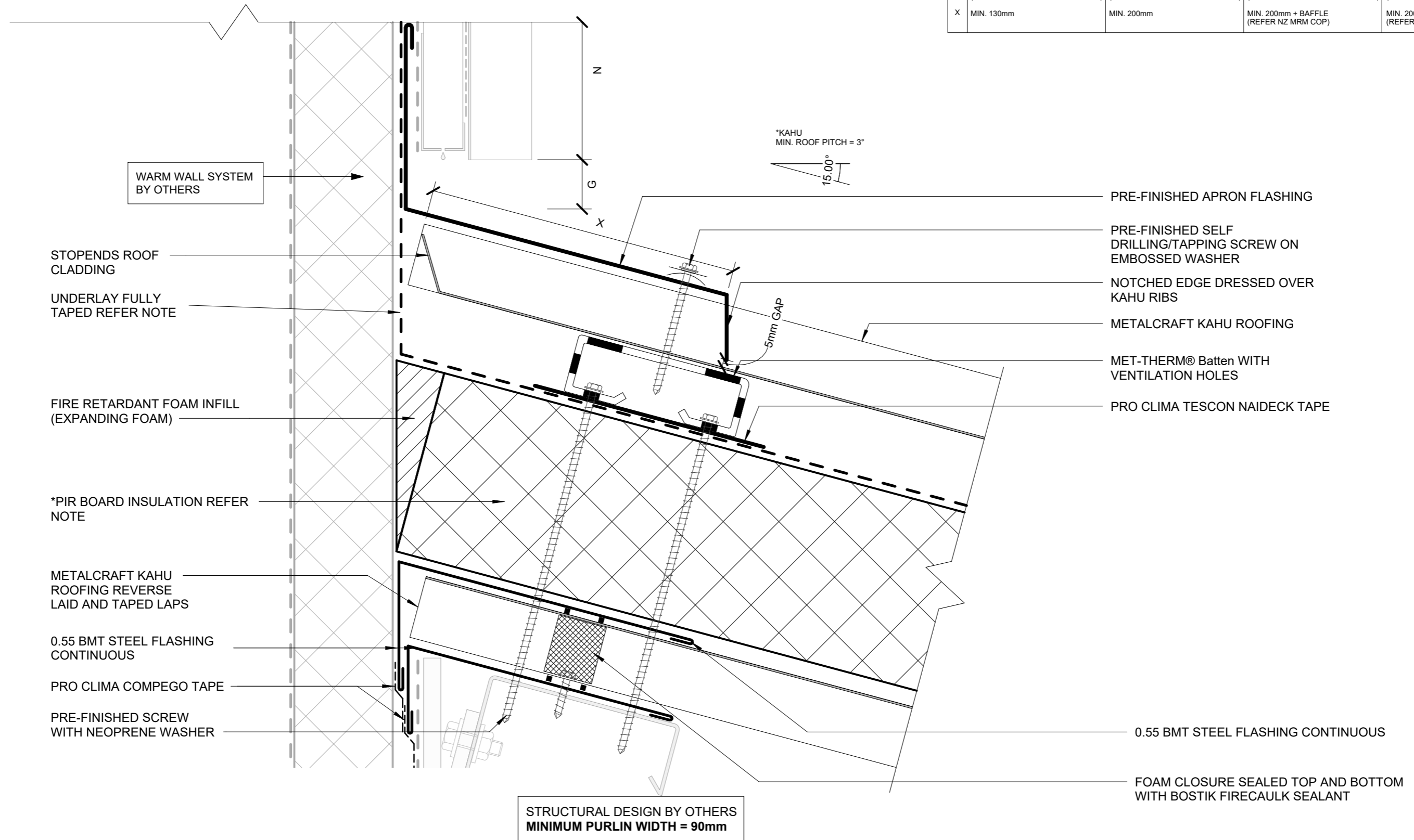
AS PER MRM CODE OF PRACTICE

	CATEGORY A	CATEGORY B	CATEGORY C	CATEGORY D
	LOW, MEDIUM OR HIGH WIND ZONES - ALL ROOF PITCHES	VERY HIGH WIND ZONES ROOF PITCH <8°	SED WIND ZONES UP TO 60 m/s	SED WIND ZONES UP TO 68 m/s
	VERY HIGH AND EXTRA HIGH WIND ZONES WHERE THE PITCH IS EQUAL TO OR GREATER THAN 10°	EXTRA HIGH WIND ZONES - ALL ROOF PITCHES	ALL ROOF PITCH	ALL ROOF PITCH
X	TRAPEZOIDAL & TRAY: ONE RIB CORRUGATE: 2 CORRUGATIONS	TRAPEZOIDAL & TRAY: TWO RIBS (20mm - 34mm)* ONE RIB (>34mm)* CORRUGATE: 2 CORRUGATIONS	TRAPEZOIDAL & TRAY: TWO RIBS (20mm - 34mm)* ONE RIB (>34mm)* CORRUGATE: 3 CORRUGATIONS	TRAPEZOIDAL & TRAY: TWO RIBS (20mm - 34mm)* + UNDERSOAKER ONE RIB (>34mm)* + UNDERSOAKER CORRUGATE: 2 CORRUGATIONS + UNDERSOAKER
Z	MIN. 50mm (VERTICALLY DOWN FACE - SMOOTH) MIN. 75mm (VERTICALLY DOWN FACE - PROFILED)	MIN. 75mm (VERTICALLY DOWN FACE - SMOOTH) MIN. 100mm (VERTICALLY DOWN FACE - PROFILED)	MIN. 75mm (VERTICALLY DOWN FACE - SMOOTH) MIN. 125mm (VERTICALLY DOWN FACE - PROFILED)	MIN. 75mm (VERTICALLY DOWN FACE - SMOOTH) MIN. 125mm (VERTICALLY DOWN FACE - PROFILED)
	* RIB HEIGHT OF PROFILE OR TURNUP			

*FOR PIR BOARD & UNDERLAY OPTIONS REFER TO BUILDING PRODUCT INFORMATION SHEET (BPIS)
WWW.METALCRAFTGROUP.CO.NZ

AS PER MRM CODE OF PRACTICE

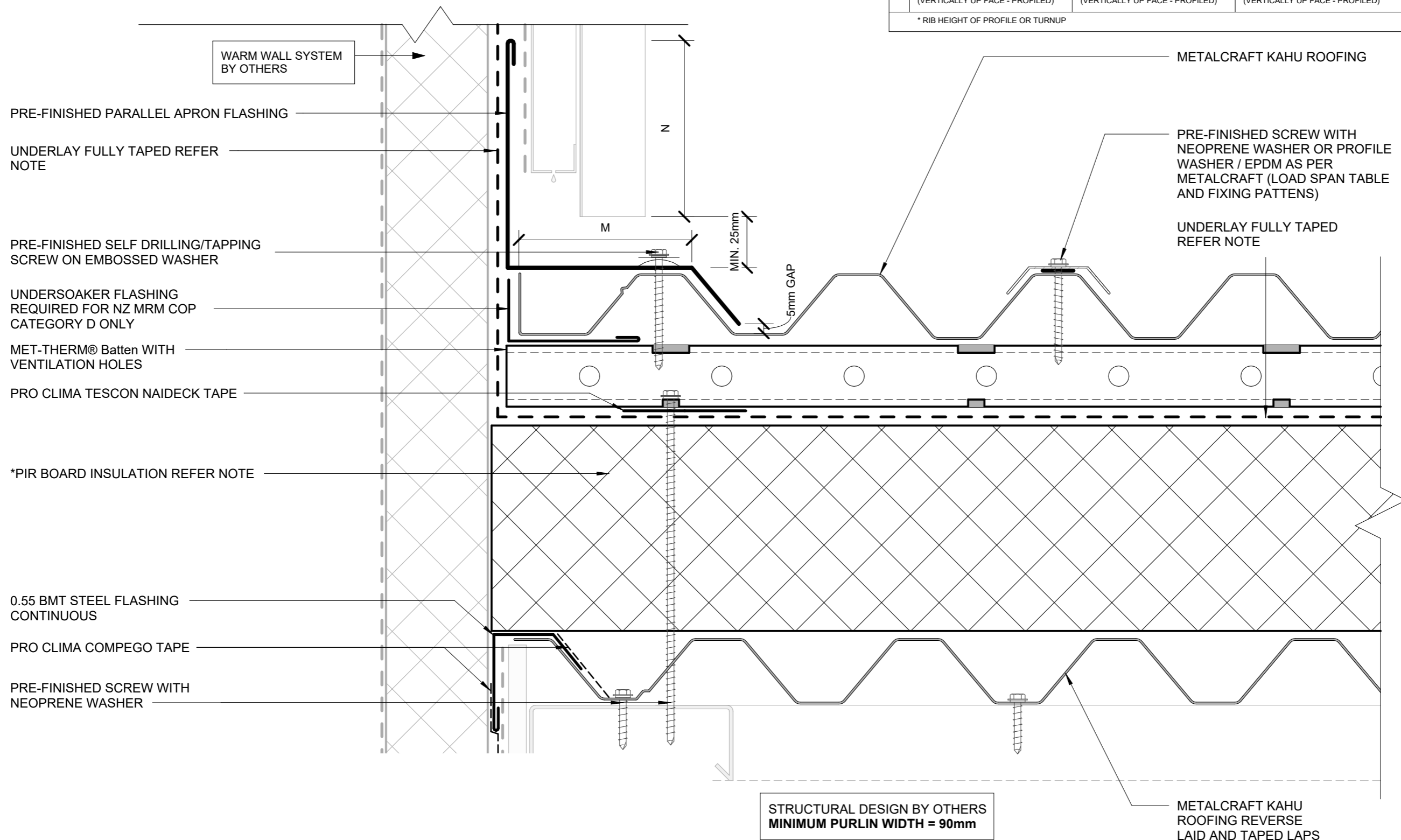
	CATEGORY A	CATEGORY B	CATEGORY C	CATEGORY D
	LOW, MEDIUM OR HIGH WIND ZONES - ALL ROOF PITCHES	VERY HIGH WIND ZONES ROOF PITCH <8°	SED WIND ZONES UP TO 60 m/s	SED WIND ZONES UP TO 68 m/s
	VERY HIGH AND EXTRA HIGH WIND ZONES WHERE THE PITCH IS EQUAL TO OR GREATER THAN 10°	EXTRA HIGH WIND ZONES -ALL ROOF PITCHES	ALL ROOF PITCH	ALL ROOF PITCH
G	25mm	25mm	25mm	25mm
N	MIN. 50mm + HEM QR 75mm (VERTICALLY UP FACE - SMOOTH) MIN. 75mm + HEM QR 100mm (VERTICALLY UP FACE - PROFILED)	MIN. 75mm + HEM QR 100mm (VERTICALLY UP FACE - SMOOTH) MIN. 100mm + HEM QR 125mm (VERTICALLY UP FACE - PROFILED)	MIN. 100mm + HEMQR 125mm (VERTICALLY UP FACE - SMOOTH) MIN. 125mm + HEM (VERTICALLY UP FACE - PROFILED)	MIN. 100mm + HEMQR 125mm (VERTICALLY UP FACE - SMOOTH) MIN. 125mm + HEM (VERTICALLY UP FACE - PROFILED)
X	MIN. 130mm	MIN. 200mm	MIN. 200mm + BAFFLE (REFER NZ MRM COP)	MIN. 200mm + BAFFLE (REFER NZ MRM COP)



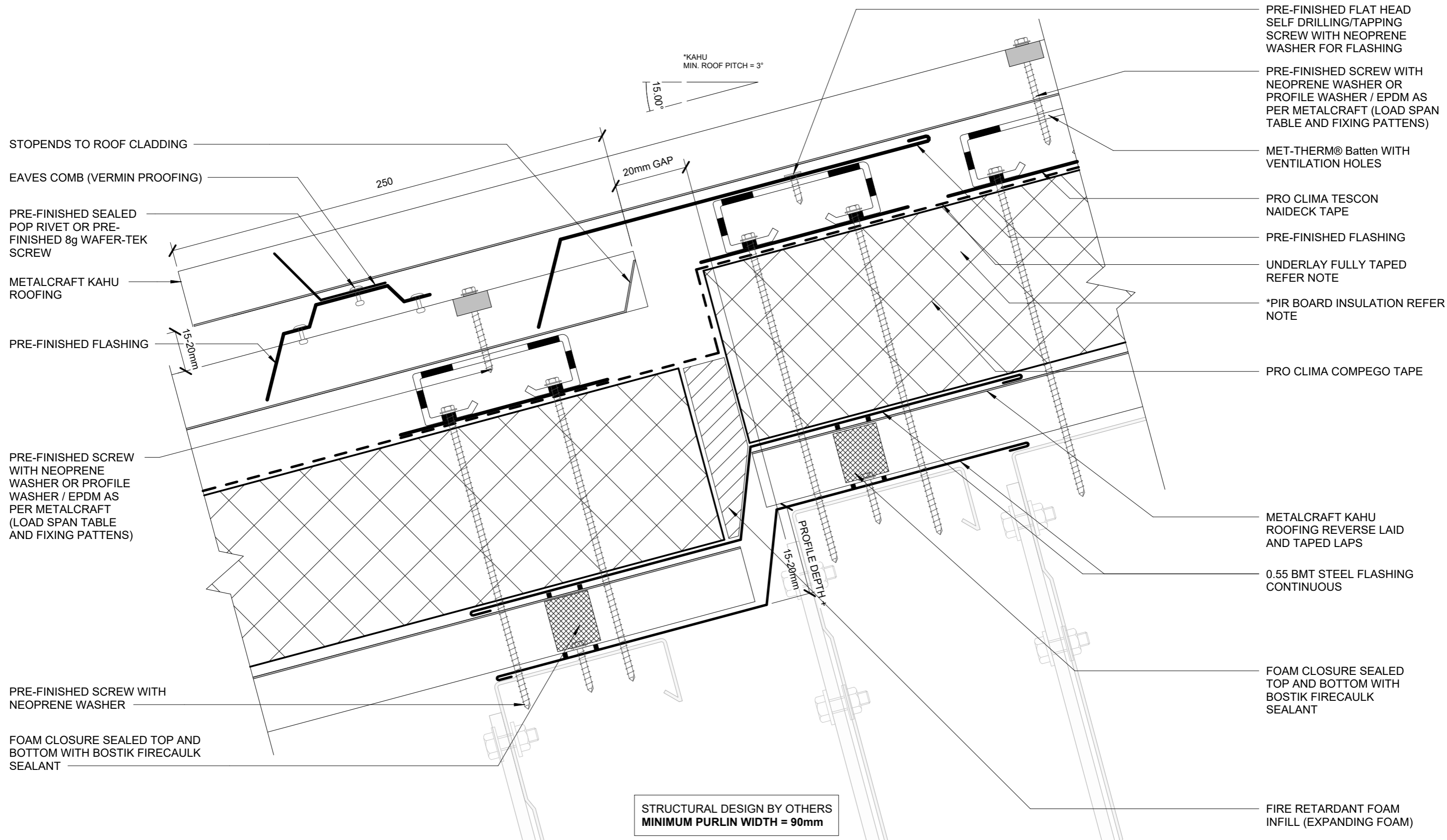
*FOR PIR BOARD & UNDERLAY OPTIONS REFER TO BUILDING PRODUCT INFORMATION SHEET (BPIS) WWW.METALCRAFTGROUP.CO.NZ

AS PER MRM CODE OF PRACTICE

	CATEGORY A	CATEGORY B	CATEGORY C	CATEGORY D
	LOW, MEDIUM OR HIGH WIND ZONES - ALL ROOF PITCHES VERY HIGH AND EXTRA HIGH WIND ZONES WHERE THE PITCH IS EQUAL TO OR GREATER THAN 10°	VERY HIGH WIND ZONES ROOF PITCH <8° EXTRA HIGH WIND ZONES -ALL ROOF PITCHES	SED WIND ZONES UP TO 60 m/s ALL ROOF PITCH	SED WIND ZONES UP TO 68 m/s ALL ROOF PITCH
M	TRAPEZOIDAL & TRAY: ONE RIB CORRUGATE: 2 CORRUGATIONS	TRAPEZOIDAL & TRAY: TWO RIBS (20mm - 34mm)* ONE RIB (>34mm)* CORRUGATE: 2 CORRUGATIONS	TRAPEZOIDAL & TRAY: TWO RIBS (20mm - 34mm)* ONE RIB (>34mm)* CORRUGATE: 3 CORRUGATIONS	TRAPEZOIDAL & TRAY: TWO RIBS (20mm - 34mm)* + UNDERSOAKER ONE RIB (>34mm)* + UNDERSOAKER CORRUGATE: 2 CORRUGATIONS + UNDERSOAKER
N	MIN. 50mm + HEM OR 75mm (VERTICALLY UP FACE - SMOOTH) MIN. 75mm + HEM OR 100mm (VERTICALLY UP FACE - PROFILED)	MIN. 75mm + HEM OR 100mm (VERTICALLY UP FACE - SMOOTH) MIN. 100mm + HEM OR 125mm (VERTICALLY UP FACE - PROFILED)	MIN. 100mm + HEM OR 125mm (VERTICALLY UP FACE - SMOOTH) MIN. 125mm + HEM (VERTICALLY UP FACE - PROFILED)	MIN. 100mm + HEM OR 125mm (VERTICALLY UP FACE - SMOOTH) MIN. 125mm + HEM (VERTICALLY UP FACE - PROFILED)
* RIB HEIGHT OF PROFILE OR TURNUP				



*FOR PIR BOARD & UNDERLAY OPTIONS REFER TO BUILDING PRODUCT INFORMATION SHEET (BPIS) WWW.METALCRAFTGROUP.CO.NZ



*FOR PIR BOARD & UNDERLAY OPTIONS REFER TO BUILDING PRODUCT INFORMATION SHEET (BPIS)
WWW.METALCRAFTGROUP.CO.NZ

EPDM FLEXIBLE CONE SLEEVE

PRO CLIMA ROFLEX

MALLEABLE FLANGE, SCREW OR RIVET FIXED, AND SEALED TO BACK TRAY. FIT NEOPRENE WASHERS TO ALL SCREW FIXINGS. FITTED ON 45° ANGLE IN PLAN. REFER TO MRM CODE OF PRACTICE VERSION.

METALCRAFT KAHU ROOFING

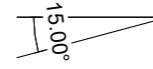
PRO CLIMA SOLITEX MENTO 3000

MET-THERM® Batten WITH VENTILATION HOLES

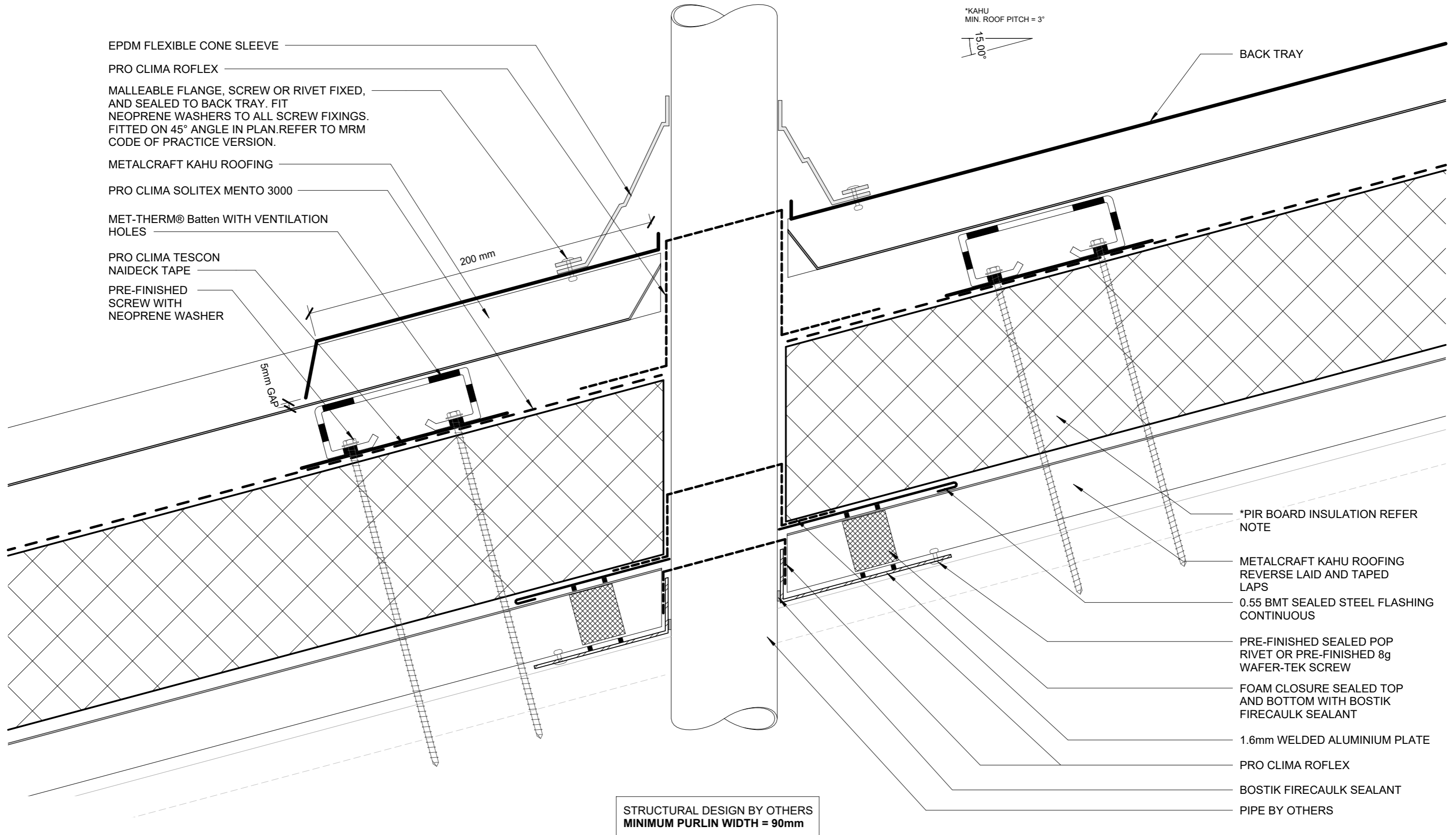
PRO CLIMA TESCON NAIDECK TAPE

PRE-FINISHED SCREW WITH NEOPRENE WASHER

*KAHU MIN. ROOF PITCH = 3°



BACK TRAY



STRUCTURAL DESIGN BY OTHERS
MINIMUM PURLIN WIDTH = 90mm

*PIR BOARD INSULATION REFER NOTE

METALCRAFT KAHU ROOFING REVERSE LAID AND TAPED LAPS

0.55 BMT SEALED STEEL FLASHING CONTINUOUS

PRE-FINISHED SEALED POP RIVET OR PRE-FINISHED 8g WAFER-TEK SCREW

FOAM CLOSURE SEALED TOP AND BOTTOM WITH BOSTIK FIRECAULK SEALANT

1.6mm WELDED ALUMINIUM PLATE

PRO CLIMA ROFLEX

BOSTIK FIRECAULK SEALANT

PIPE BY OTHERS

*FOR PIR BOARD & UNDERLAY OPTIONS REFER TO BUILDING PRODUCT INFORMATION SHEET (BPIS)
WWW.METALCRAFTGROUP.CO.NZ



DISCLAIMER:
These drawings are the copyright of Metalcraft Roofing and all details are to be used for indicative purposes only. The Architect / Designer should consult all of Metalcraft Roofing's MET-THERM® product literature and also the NZMRM code of practice and all relevant building codes. The Architect/ Designer must satisfy themselves that the chosen MET-THERM® system and relevant details are suitable for their specific project. Metalcraft Roofing reserves the right to alter or upgrade these details at any time without prior notice.

Met-Therm™ - KAHU®

Rev. 1.0

COLD PIPE PENETRATION
WARM ROOFING DETAILS

Reference CRMTKA

Date OCT 2024

Scale 1 : 2

Sheet **D 10 / 13**

0.55 BMT STEEL
FLASHING
CONTINUOUS

METALCRAFT KAHU
ROOFING

PRE-FINISHED SELF
DRILLING/TAPPING
SCREW ON EMBOSSED
WASHER

PRO CLIMA TESCON
NAIDECK TAPE

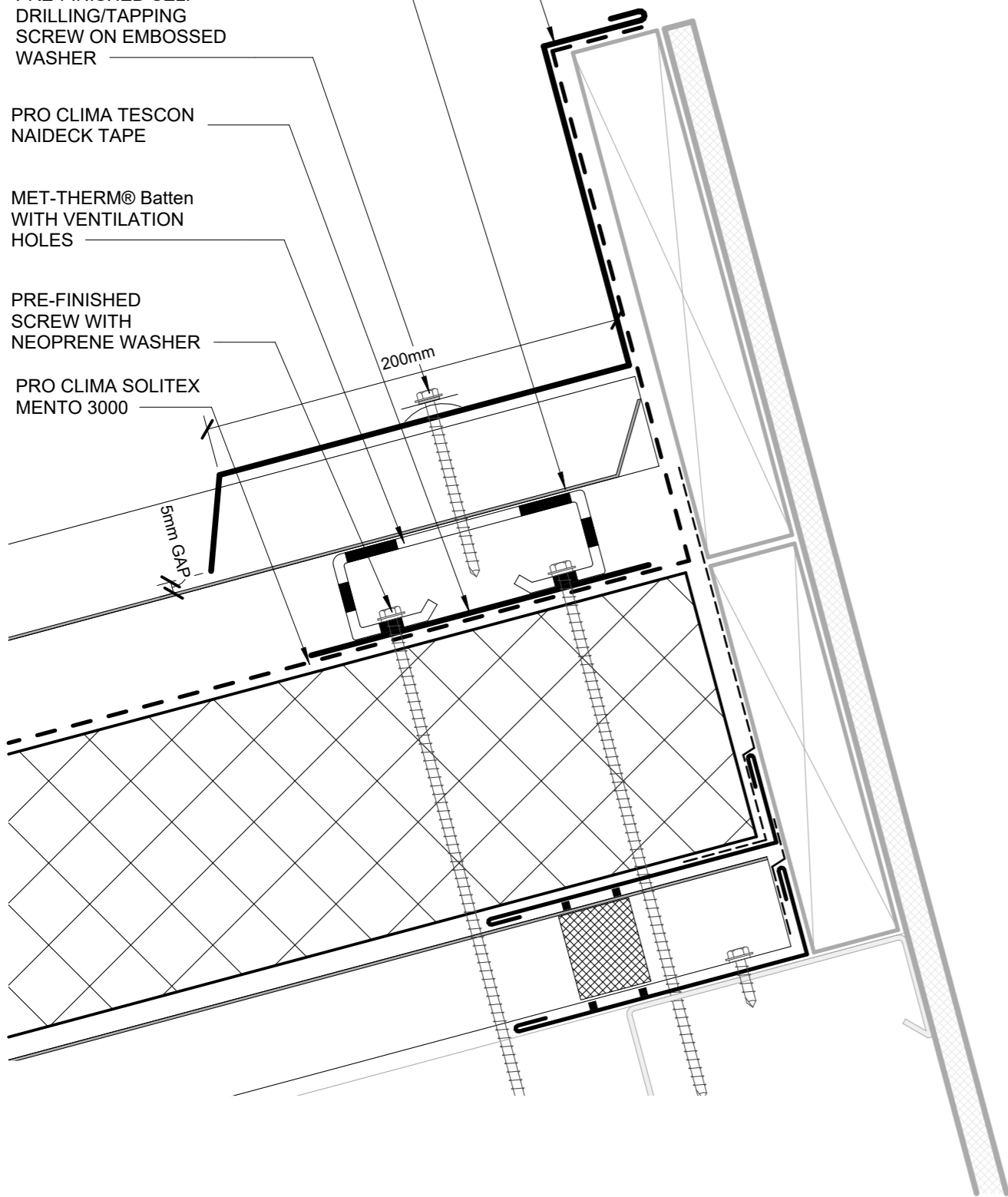
MET-THERM® Batten
WITH VENTILATION
HOLES

PRE-FINISHED
SCREW WITH
NEOPRENE WASHER

PRO CLIMA SOLITEX
MENTO 3000

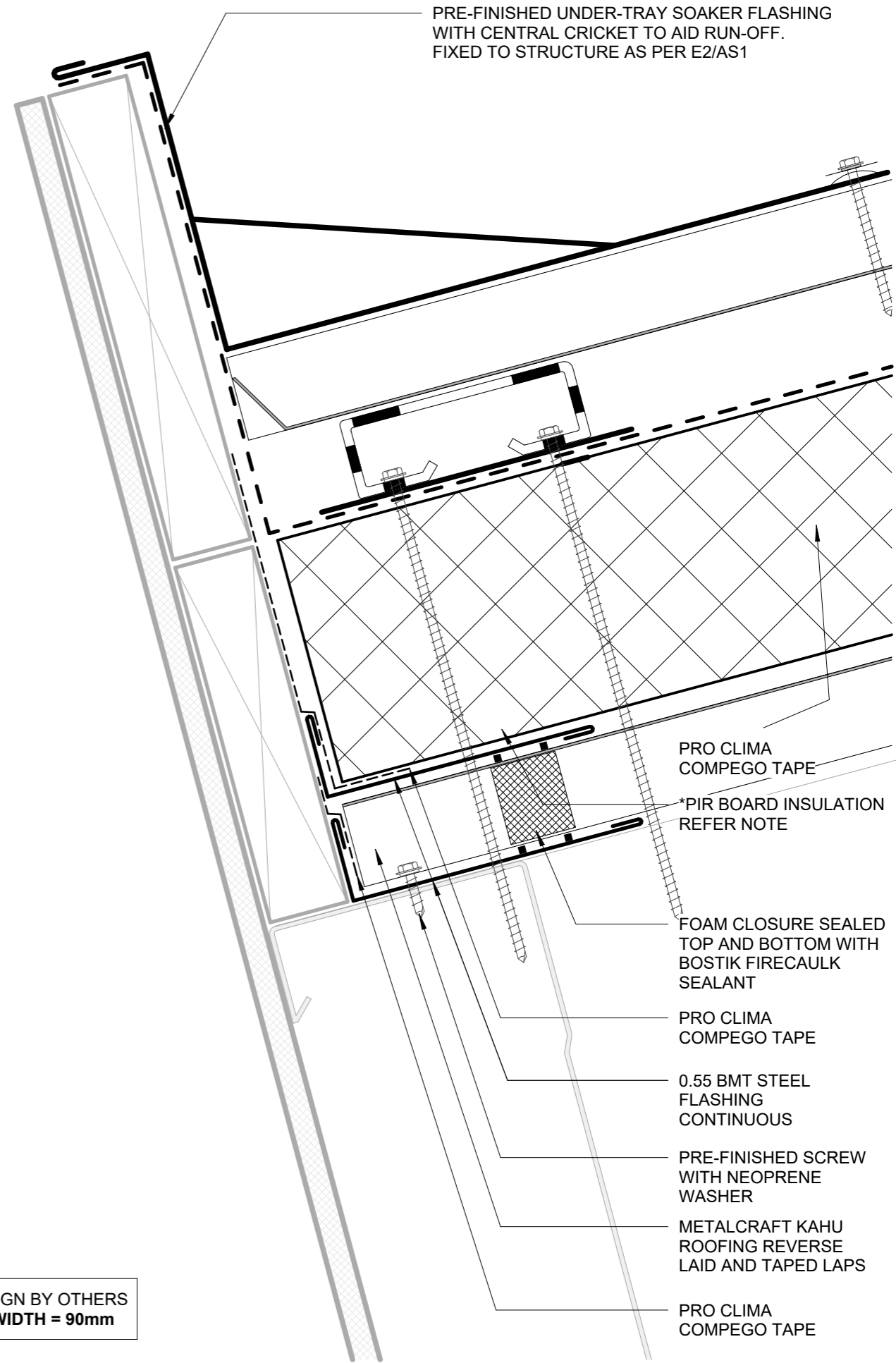
*KAHU
MIN. ROOF PITCH = 3°
15.00°

RECTANGULAR AND SQUARE SKYLIGHT AND
SUPPORTING STRUCTURE BY OTHERS



STRUCTURAL DESIGN BY OTHERS
MINIMUM PURLIN WIDTH = 90mm

PRE-FINISHED UNDER-TRAY SOAKER FLASHING
WITH CENTRAL CRICKET TO AID RUN-OFF.
FIXED TO STRUCTURE AS PER E2/AS1



PRO CLIMA
COMPEGO TAPE

*PIR BOARD INSULATION
REFER NOTE

FOAM CLOSURE SEALED
TOP AND BOTTOM WITH
BOSTIK FIRECAULK
SEALANT

PRO CLIMA
COMPEGO TAPE

0.55 BMT STEEL
FLASHING
CONTINUOUS

PRE-FINISHED SCREW
WITH NEOPRENE
WASHER

METALCRAFT KAHU
ROOFING REVERSE
LAID AND TAPED LAPS

PRO CLIMA
COMPEGO TAPE

*FOR PIR BOARD & UNDERLAY OPTIONS REFER TO BUILDING PRODUCT INFORMATION SHEET (BPIS)
WWW.METALCRAFTGROUP.CO.NZ

Metalcraft
Roofing
www.metalcraftgroup.co.nz

DISCLAIMER:
These drawings are the copyright of Metalcraft Roofing and all details are to be used for indicative purposes only. The Architect / Designer should consult all of Metalcraft Roofing's MET-THERM® product literature and also the NZMRM code of practice and all relevant building codes. The Architect/ Designer must satisfy themselves that the chosen MET-THERM® system and relevant details are suitable for their specific project. Metalcraft Roofing reserves the right to alter or upgrade these details at any time without prior notice.

Met-Therm™ - KAHU®

Rev. 1.0

SKYLIGHT PENETRATION 01
WARM ROOFING DETAILS

Reference CRMTKA

Date OCT 2024

Scale 1 : 2

Sheet **D 11 / 13**

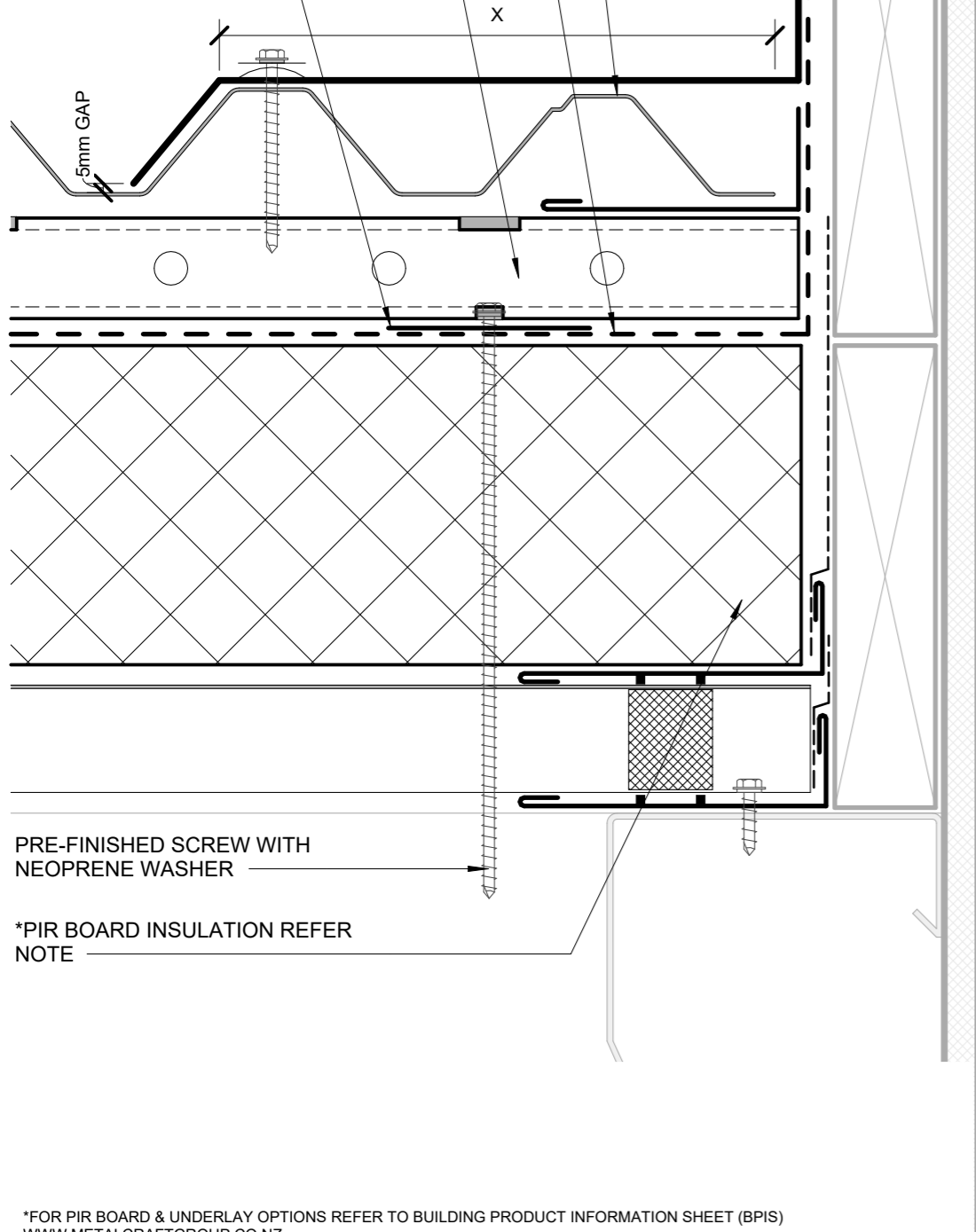
0.55 BMT STEEL FLASHING
CONTINUOUS

METALCRAFT KAHU ROOFING

PRO CLIMA SOLITEX MENTO
3000

MET-THERM® Batten WITH
VENTILATION HOLES

PRO CLIMA TESCON
NAIDECK TAPE



PRE-FINISHED SCREW WITH
NEOPRENE WASHER

*PIR BOARD INSULATION REFER
NOTE

*FOR PIR BOARD & UNDERLAY OPTIONS REFER TO BUILDING PRODUCT INFORMATION SHEET (BPIS)
WWW.METALCRAFTGROUP.CO.NZ

Metalcraft
Roofing
www.metalcraftgroup.co.nz

DISCLAIMER:
These drawings are the copyright of Metalcraft Roofing and all details are to be used for indicative purposes only. The Architect / Designer should consult all of Metalcraft Roofing's MET-THERM® product literature and also the NZMRM code of practice and all relevant building codes. The Architect/ Designer must satisfy themselves that the chosen MET-THERM® system and relevant details are suitable for their specific project. Metalcraft Roofing reserves the right to alter or upgrade these details at any time without prior notice.

RECTANGULAR AND SQUARE SKYLIGHT AND
SUPPORTING STRUCTURE BY OTHERS

AS PER MRM CODE OF PRACTICE

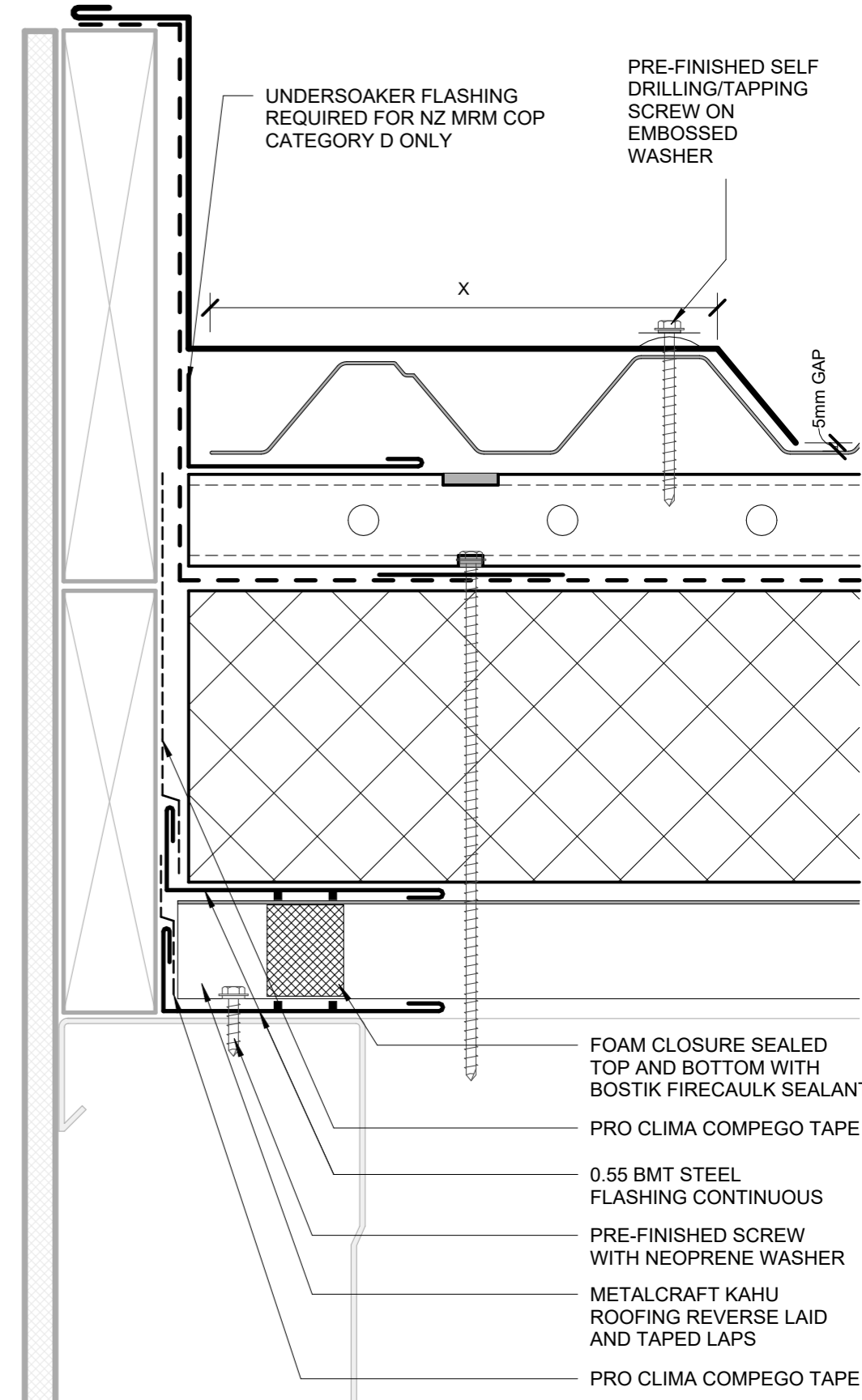
	CATEGORY A	CATEGORY B
	LOW, MEDIUM OR HIGH WIND ZONES - ALL ROOF PITCHES	VERY HIGH WIND ZONES ROOF PITCH <8°
	VERY HIGH AND EXTRA HIGH WIND ZONES WHERE THE PITCH IS EQUAL TO OR GREATER THAN 10°	EXTRA HIGH WIND ZONES -ALL ROOF PITCHES
X	TRAPEZOIDAL & TRAY: ONE RIB	TRAPEZOIDAL & TRAY: TWO RIBS (20mm - 34mm)* ONE RIB (>34mm)*
	CORRUGATE: 2 CORRUGATIONS	CORRUGATE: 2 CORRUGATIONS
	CATEGORY C	CATEGORY D
	SED WIND ZONES UP TO 60 m/s	SED WIND ZONES UP TO 68 m/s
	ALL ROOF PITCH	ALL ROOF PITCH
X	TRAPEZOIDAL & TRAY: TWO RIBS (20mm - 34mm)* ONE RIB (>34mm)*	TRAPEZOIDAL & TRAY: TWO RIBS (20mm - 34mm)* + UNDERSOAKER ONE RIB (>34mm)* + UNDERSOAKER
	CORRUGATE: 3 CORRUGATIONS	CORRUGATE: 2 CORRUGATIONS + UNDERSOAKER

* RIB HEIGHT OF PROFILE OR TURNUP

STRUCTURAL DESIGN BY OTHERS
MINIMUM PURLIN WIDTH = 90mm

UNDERSOAKER FLASHING
REQUIRED FOR NZ MRM COP
CATEGORY D ONLY

PRE-FINISHED SELF
DRILLING/TAPPING
SCREW ON
EMBOSSED
WASHER



FOAM CLOSURE SEALED
TOP AND BOTTOM WITH
BOSTIK FIRECAULK SEALANT

PRO CLIMA COMPEGO TAPE

0.55 BMT STEEL
FLASHING CONTINUOUS

PRE-FINISHED SCREW
WITH NEOPRENE WASHER

METALCRAFT KAHU
ROOFING REVERSE LAID
AND TAPED LAPS

PRO CLIMA COMPEGO TAPE

SKYLIGHT PENETRATION 02
WARM ROOFING DETAILS

Met-Therm™ - KAHU®

Rev. 1.0

Reference CRMTKA

Date OCT 2024

Scale 1 : 2

Sheet **D 12 / 13**

PRE-FINISHED SCREW WITH
NEOPRENE WASHER OR PROFILE
WASHER / EPDM AS PER METALCRAFT
(LOAD SPAN TABLE AND FIXING
PATTENS)

METALCRAFT KAHU ROOFING

MET-THERM® Batten WITH
VENTILATION HOLES
PRO CLIMA SOLITEX MENTO
3000

PRE-FINISHED SCREW WITH
NEOPRENE WASHER

PRO CLIMA TESCON
NAIDECK TAPE

PRO CLIMA COMPEGO TAPE

*PIR BOARD INSULATION REFER
NOTE

METALCRAFT KAHU ROOFING
REVERSE LAID AND TAPED LAPS

PRE-FINISHED SCREW WITH
NEOPRENE WASHER OR PROFILE
WASHER / EPDM AS PER METALCRAFT
(LOAD SPAN TABLE AND FIXING
PATTENS)

METALCRAFT KAHU ROOFING

MET-THERM® Batten WITH
VENTILATION HOLES

STRUCTURAL DESIGN BY OTHERS
MINIMUM PURLIN WIDTH = 90mm

*PIR BOARD INSULATION REFER
NOTE

METALCRAFT KAHU ROOFING
REVERSE LAID AND TAPED LAPS

PRE-FINISHED SCREW WITH
NEOPRENE WASHER

STRUCTURAL DESIGN BY OTHERS

PRO CLIMA COMPEGO TAPE

*FOR PIR BOARD & UNDERLAY OPTIONS REFER TO BUILDING PRODUCT INFORMATION SHEET (BPIS)
WWW.METALCRAFTGROUP.CO.NZ

Metalcraft
Roofing
www.metalcraftgroup.co.nz

DISCLAIMER:
These drawings are the copyright of Metalcraft Roofing and all details are to be used for indicative purposes only. The Architect / Designer should consult all of Metalcraft Roofing's MET-THERM® product literature and also the NZMRM code of practice and all relevant building codes. The Architect/ Designer must satisfy themselves that the chosen MET-THERM® system and relevant details are suitable for their specific project. Metalcraft Roofing reserves the right to alter or upgrade these details at any time without prior notice.

Met-Therm™ - KAHU®

Rev. 1.0

Reference CRMTKA

Date OCT 2024

TYPICAL CROSS SECTION
WARM ROOFING DETAILS

ScaleAs indicated Sheet **D 13 / 13**