

Espan 340[®] / 470[®]

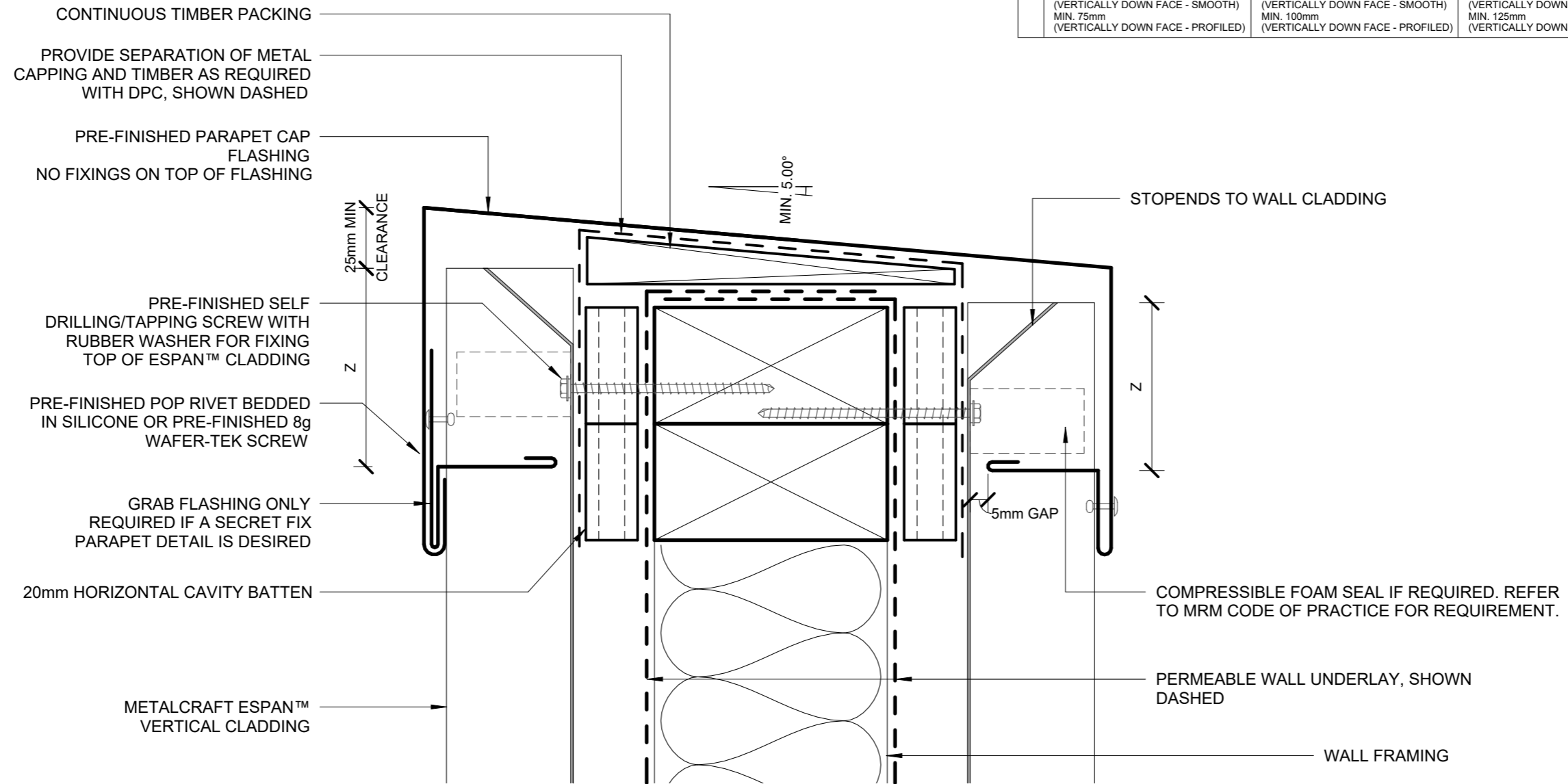
RESIDENTIAL VERTICAL CLADDING

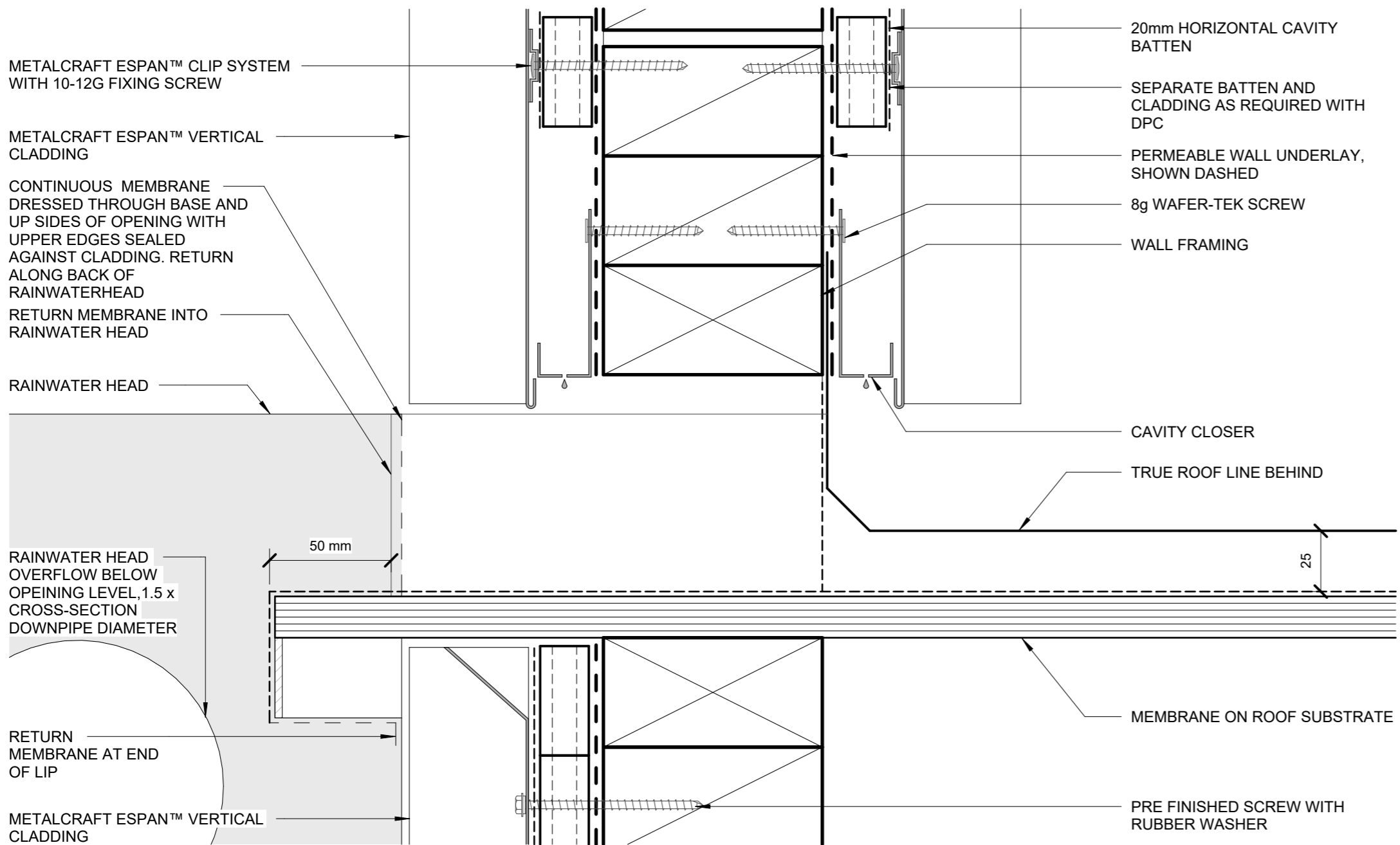
DETAIL LIST

		<u>Revision</u>	<u>Date</u>
B 01	PARAPET AND BALUSTRADE CAPPING	3.0	DEC 2024
B 02	SCUPPER W/ RAINWATER HEAD	3.0	DEC 2024
B 03	SOFFIT	3.0	DEC 2024
B 04	BUTT WINDOW HEAD	3.0	DEC 2024
B 05	BUTT WINDOW SILL	3.0	DEC 2024
B 06	BUTT WINDOW JAMB	3.0	DEC 2024
B 07	RECESSED WINDOW HEAD	3.0	DEC 2024
B 08	RECESSED WINDOW SILL	3.0	DEC 2024
B 09	RECESSED WINDOW JAMB	3.0	DEC 2024
B 10	METERBOX HEAD	3.0	DEC 2024
B 11	METERBOX SILL	3.0	DEC 2024
B 12	METERBOX JAMB	3.0	DEC 2024
B 13	INTERNAL CORNER	3.0	DEC 2024
B 14	EXTERNAL CORNER	3.0	DEC 2024
B 15	SOAKER FLASHING	3.0	DEC 2024
B 16	CHANGE IN CLADDING	3.0	DEC 2024
B 17	CLADDING ABUTMENT	3.0	DEC 2024
B 18	BOTTOM OF CLADDING (FLUSH)	3.0	DEC 2024
B 19	BOTTOM OF CLADDING (RECESSED)	3.0	DEC 2024
B 20	3D WINDOW FLASHINGS	3.0	DEC 2024
B 21	3D RAINWATER HEAD	3.0	DEC 2024

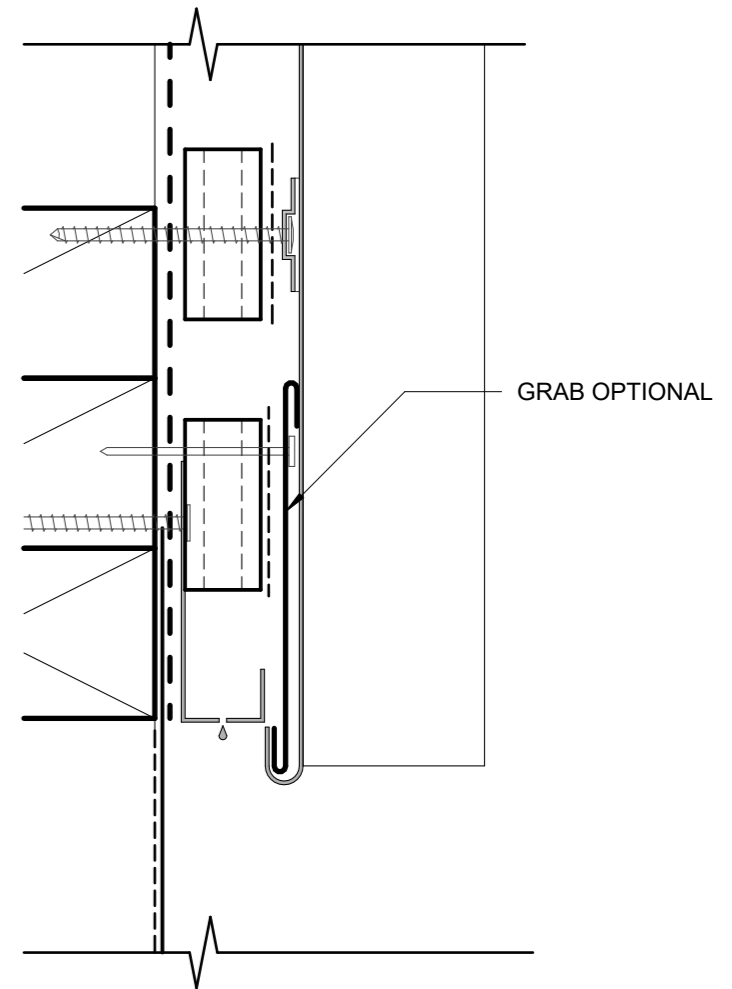
AS PER E2/ASI			
	SITUATION 1 1. LOW, MEDIUM, HIGH WIND ZONES, WHERE ROOF PITCH $\geq 10^\circ$	SITUATION 2 1. ALL ROOF PITCHES IN VERY HIGH WIND ZONE 2. LOW, MEDIUM, HIGH WIND ZONES WHERE ROOF PITCH $\leq 10^\circ$	SITUATION 3 1. FOR ALL ROOF PITCHES IN EXTRA HIGH WIND ZONES
Z	MIN. 50mm	MIN. 70mm	MIN. 90mm

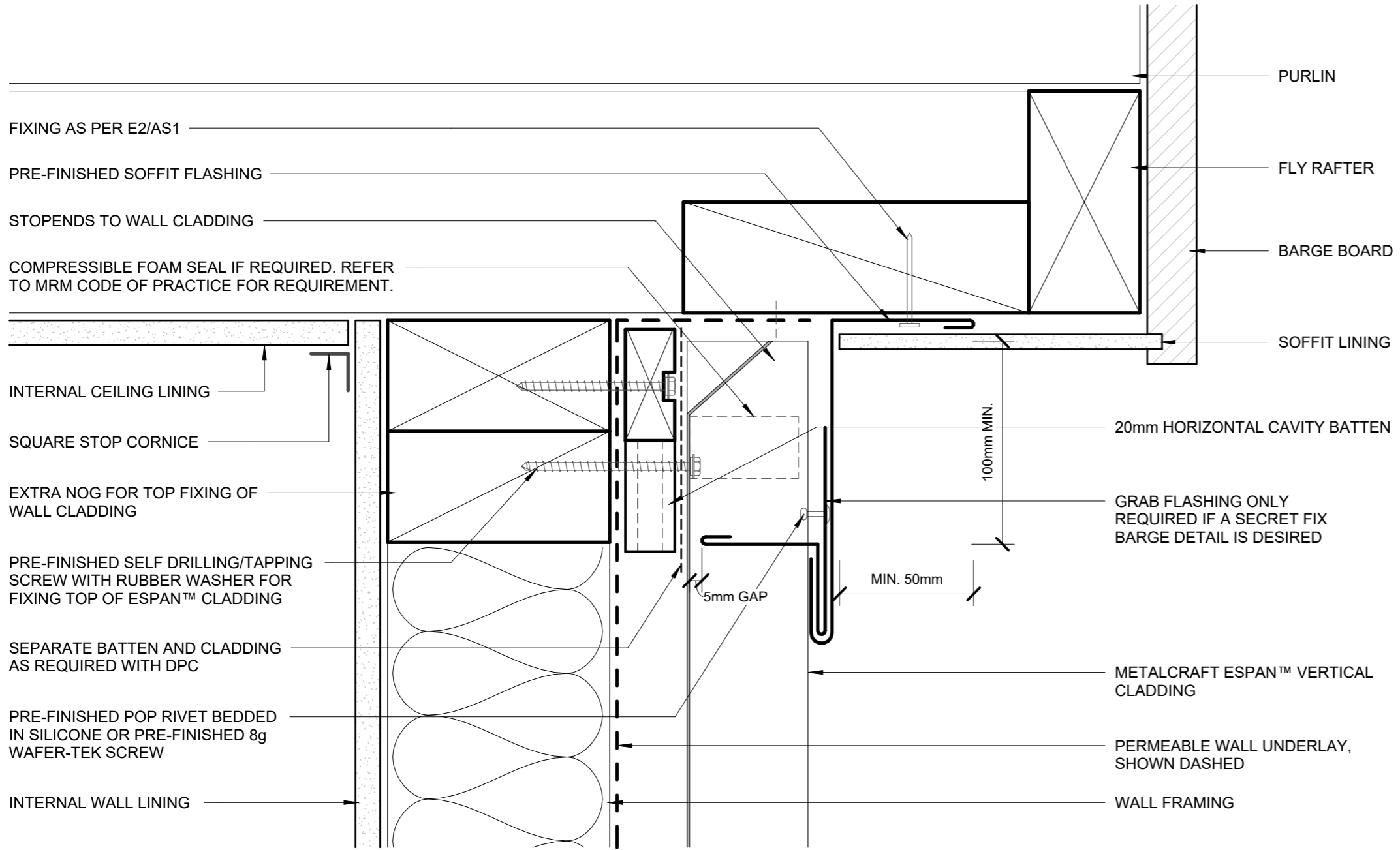
AS PER MRM CODE OF PRACTICE				
	CATEGORY A LOW, MEDIUM OR HIGH WIND ZONES - ALL ROOF PITCHES VERY HIGH AND EXTRA HIGH WIND ZONES WHERE THE PITCH IS EQUAL TO OR GREATER THAN 10°	CATEGORY B VERY HIGH WIND ZONES ROOF PITCH $< 8^\circ$ EXTRA HIGH WIND ZONES - ALL ROOF PITCHES	CATEGORY C SED WIND ZONES UP TO 60 m/s ALL ROOF PITCH	CATEGORY D SED WIND ZONES UP TO 68 m/s ALL ROOF PITCH
Z	MIN. 50mm (VERTICALLY DOWN FACE - SMOOTH) MIN. 75mm (VERTICALLY DOWN FACE - PROFILED)	MIN. 75mm (VERTICALLY DOWN FACE - SMOOTH) MIN. 100mm (VERTICALLY DOWN FACE - PROFILED)	MIN. 100mm (VERTICALLY DOWN FACE - SMOOTH) MIN. 125mm (VERTICALLY DOWN FACE - PROFILED)	MIN. 100mm (VERTICALLY DOWN FACE - SMOOTH) MIN. 125mm (VERTICALLY DOWN FACE - PROFILED)



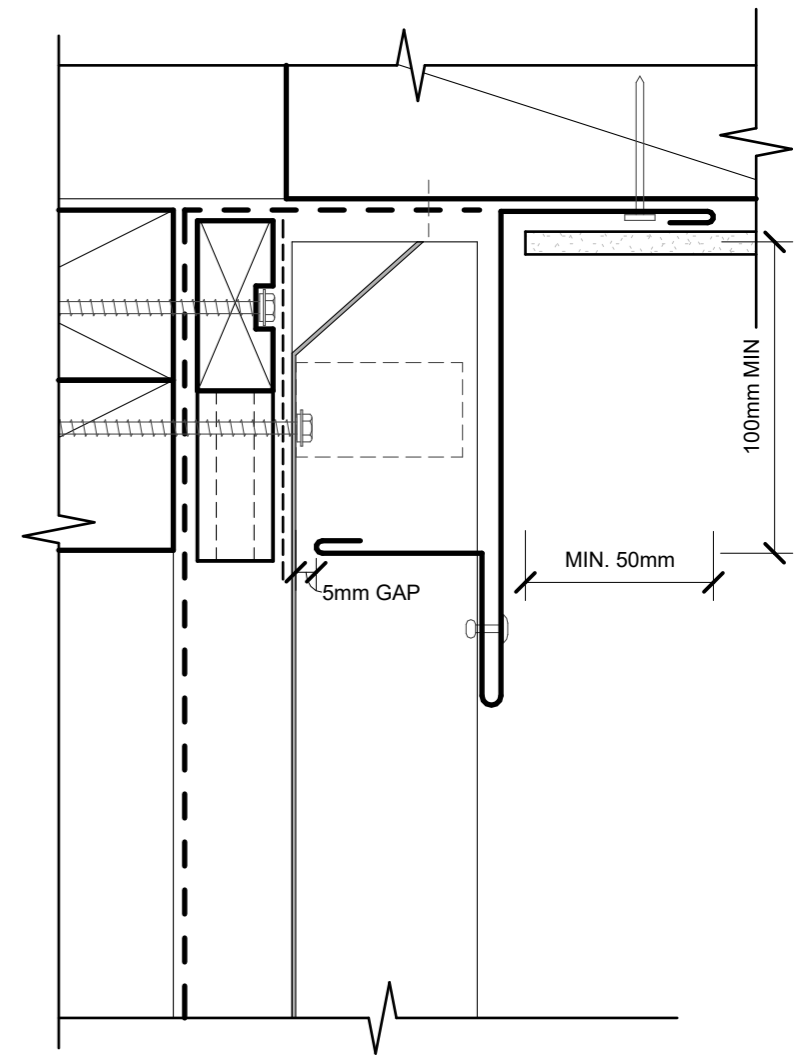


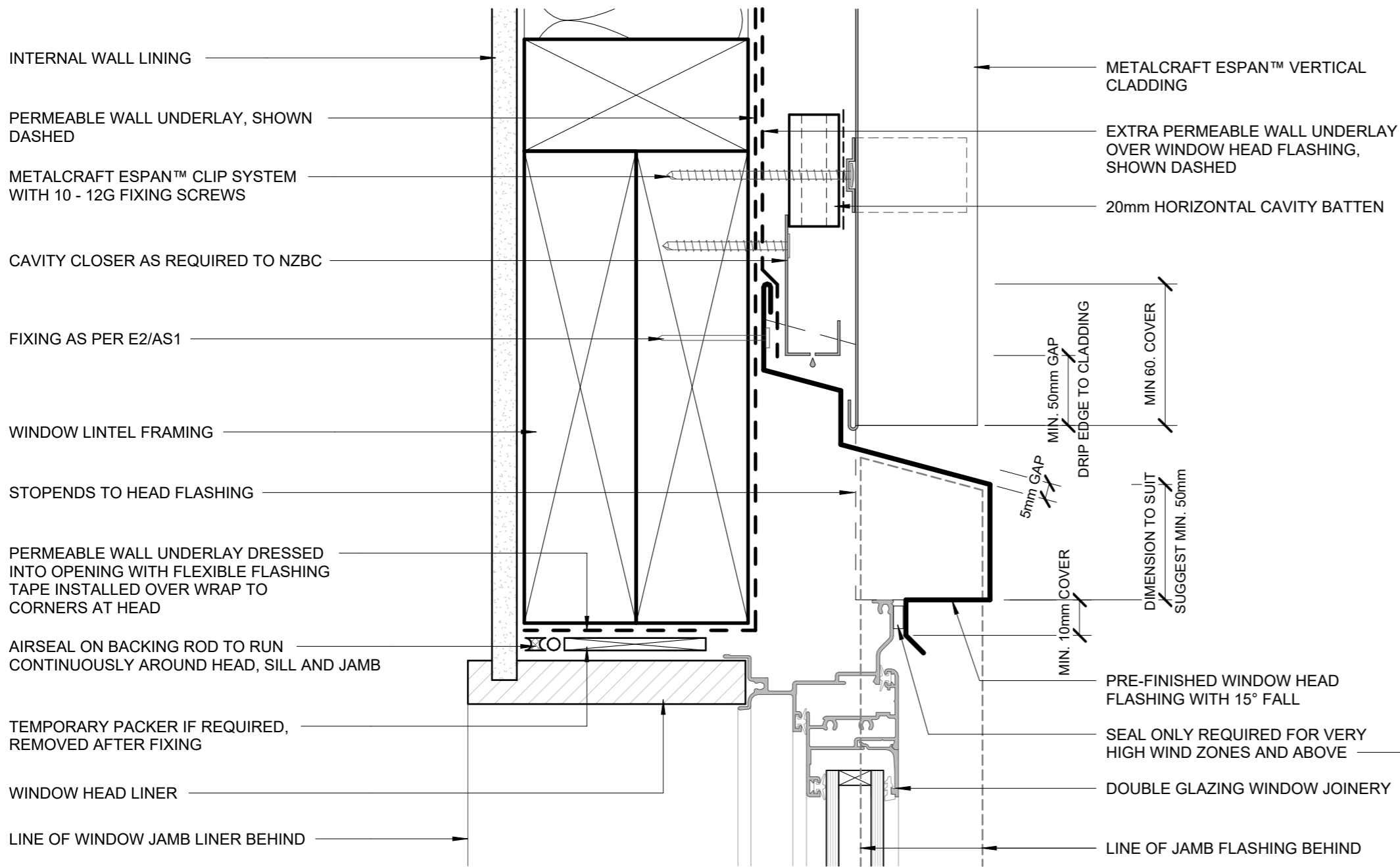
ALTERNATIVE OPTION



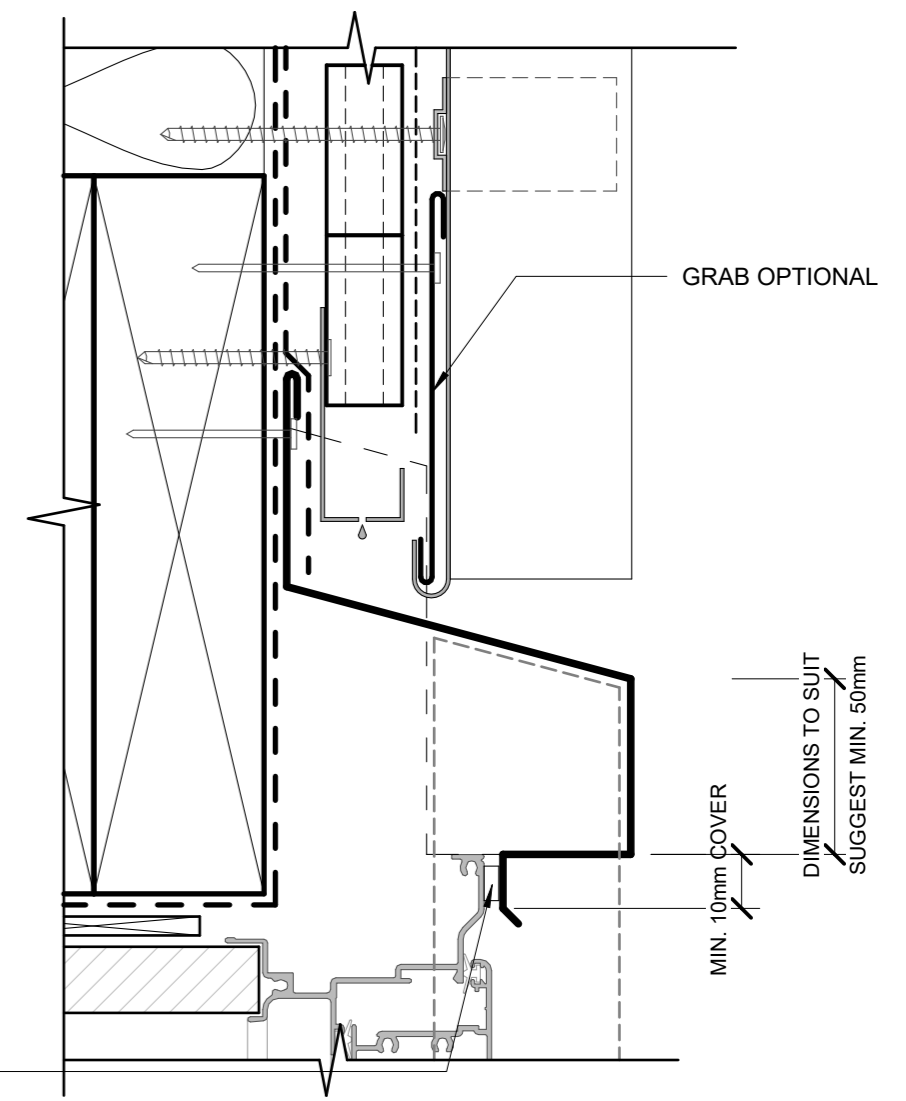


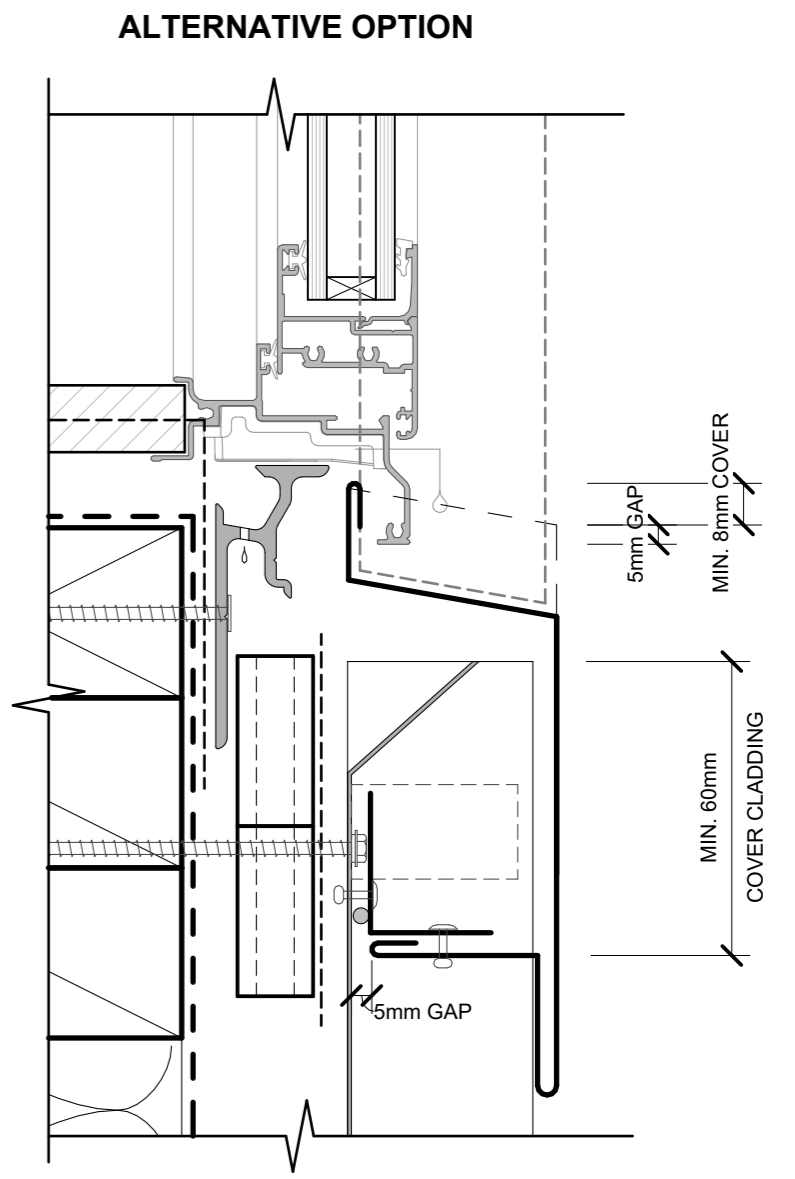
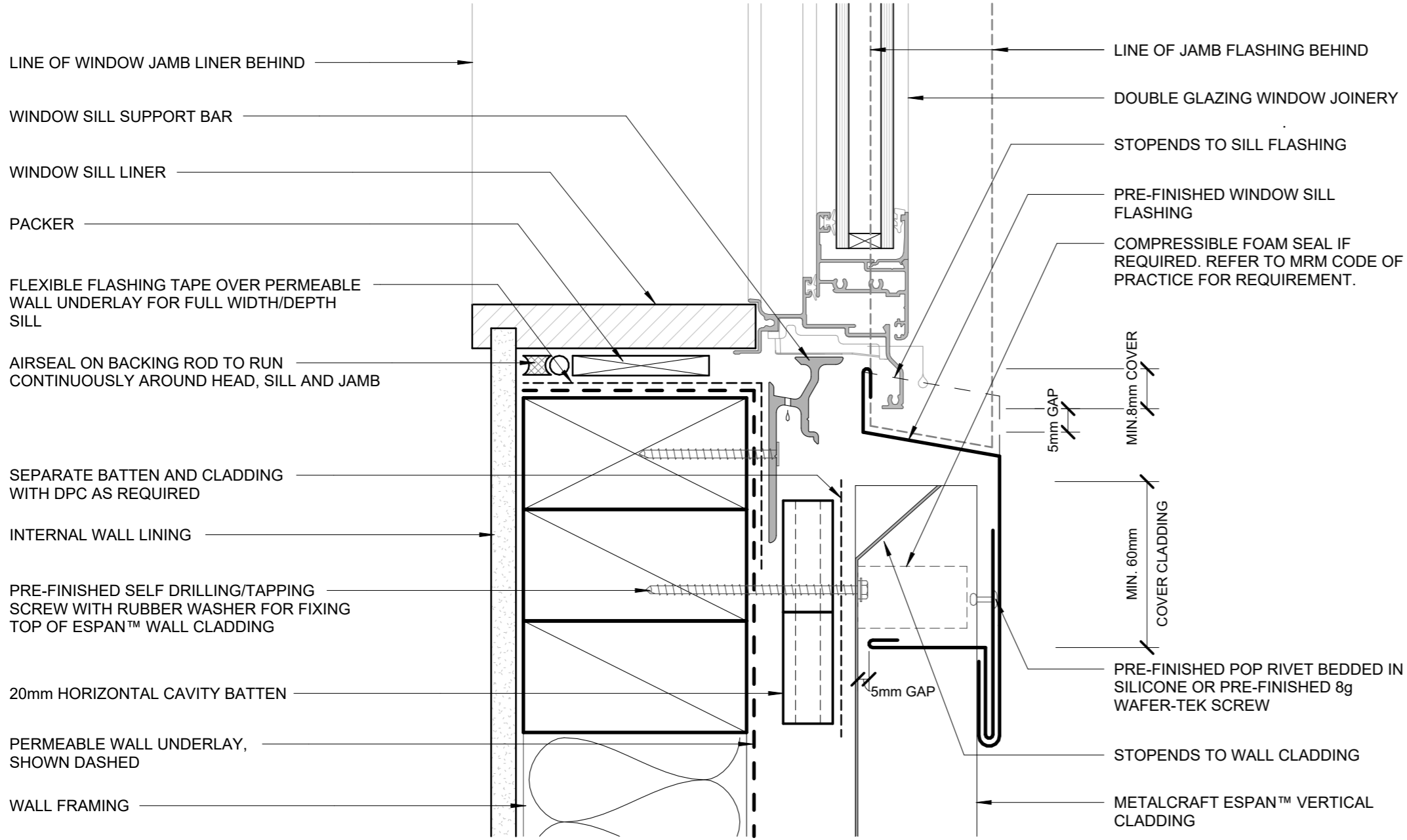
ALTERNATIVE OPTION

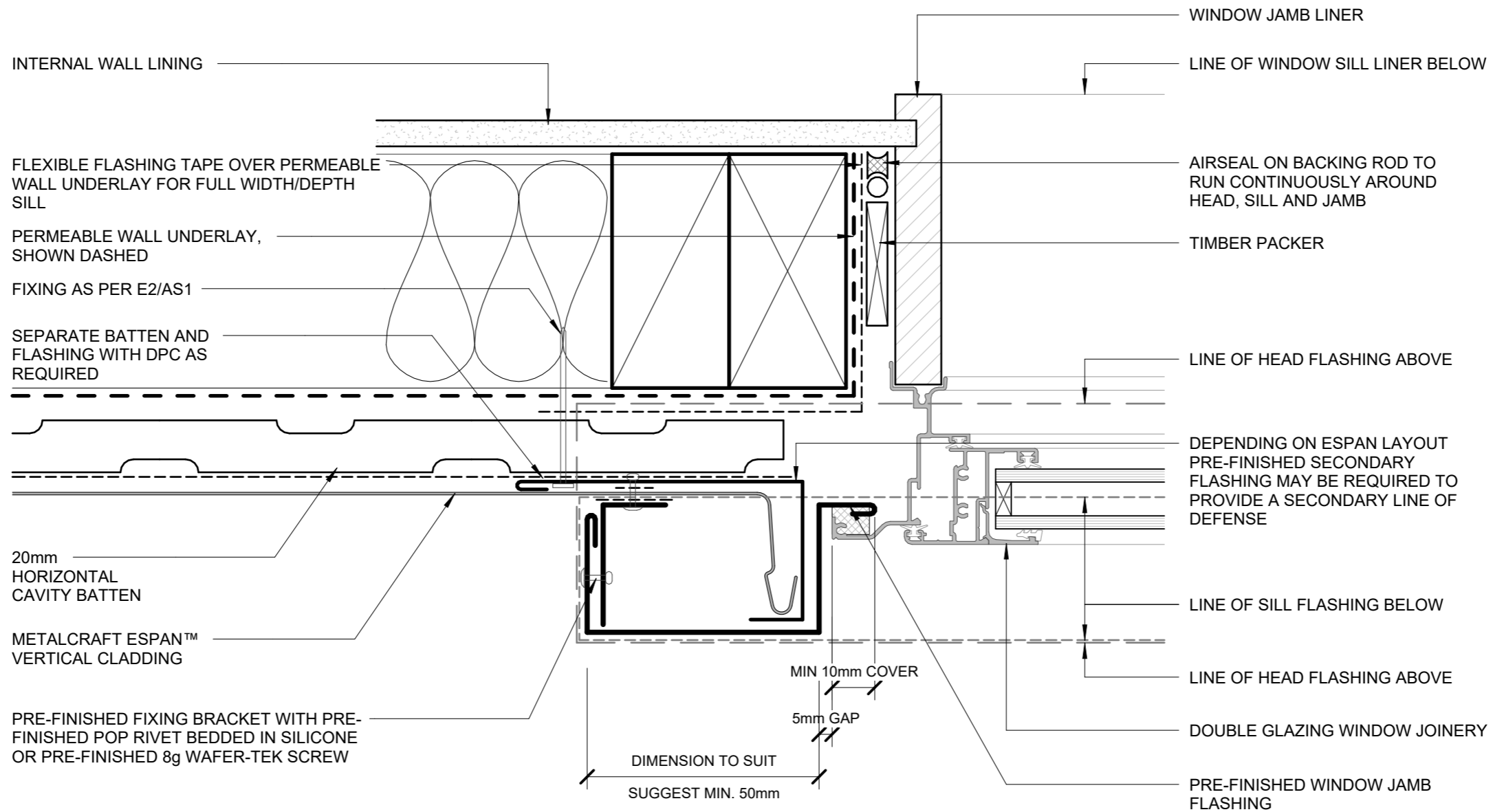


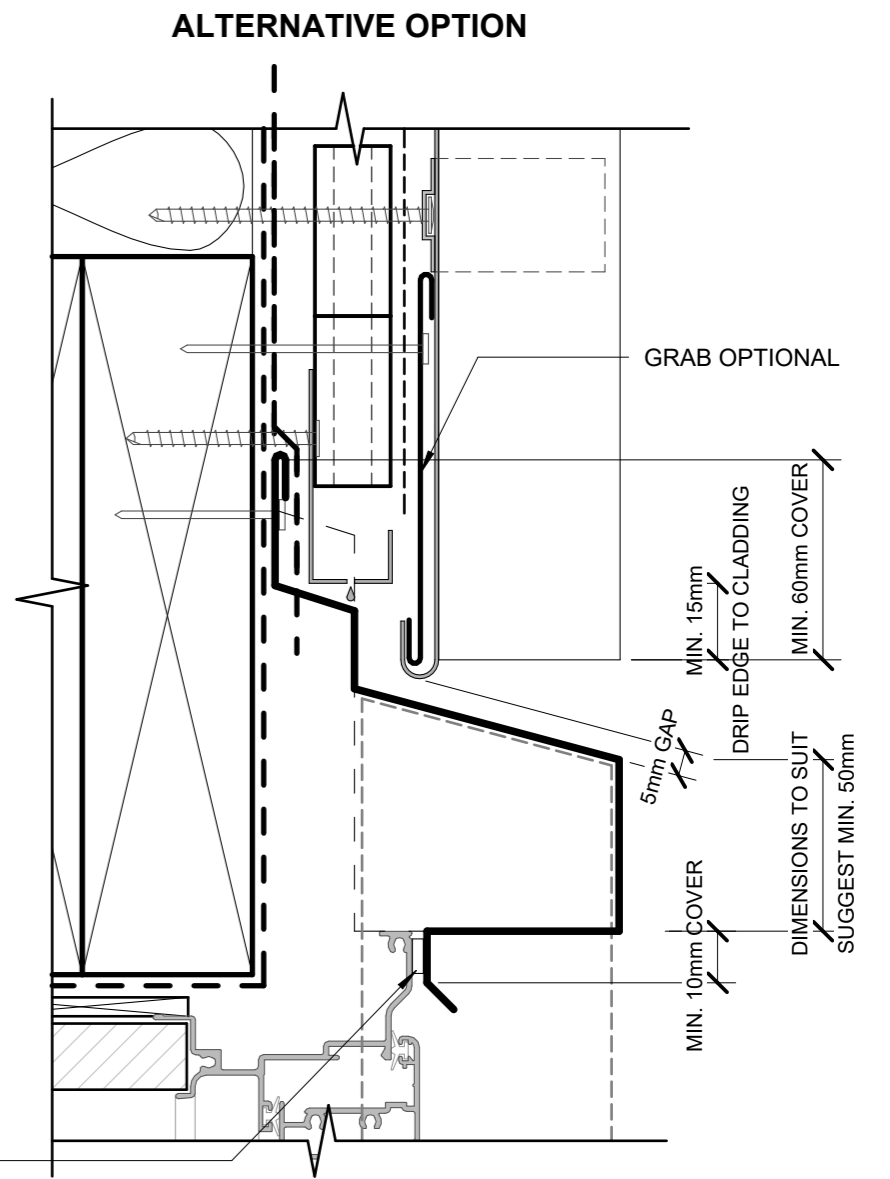
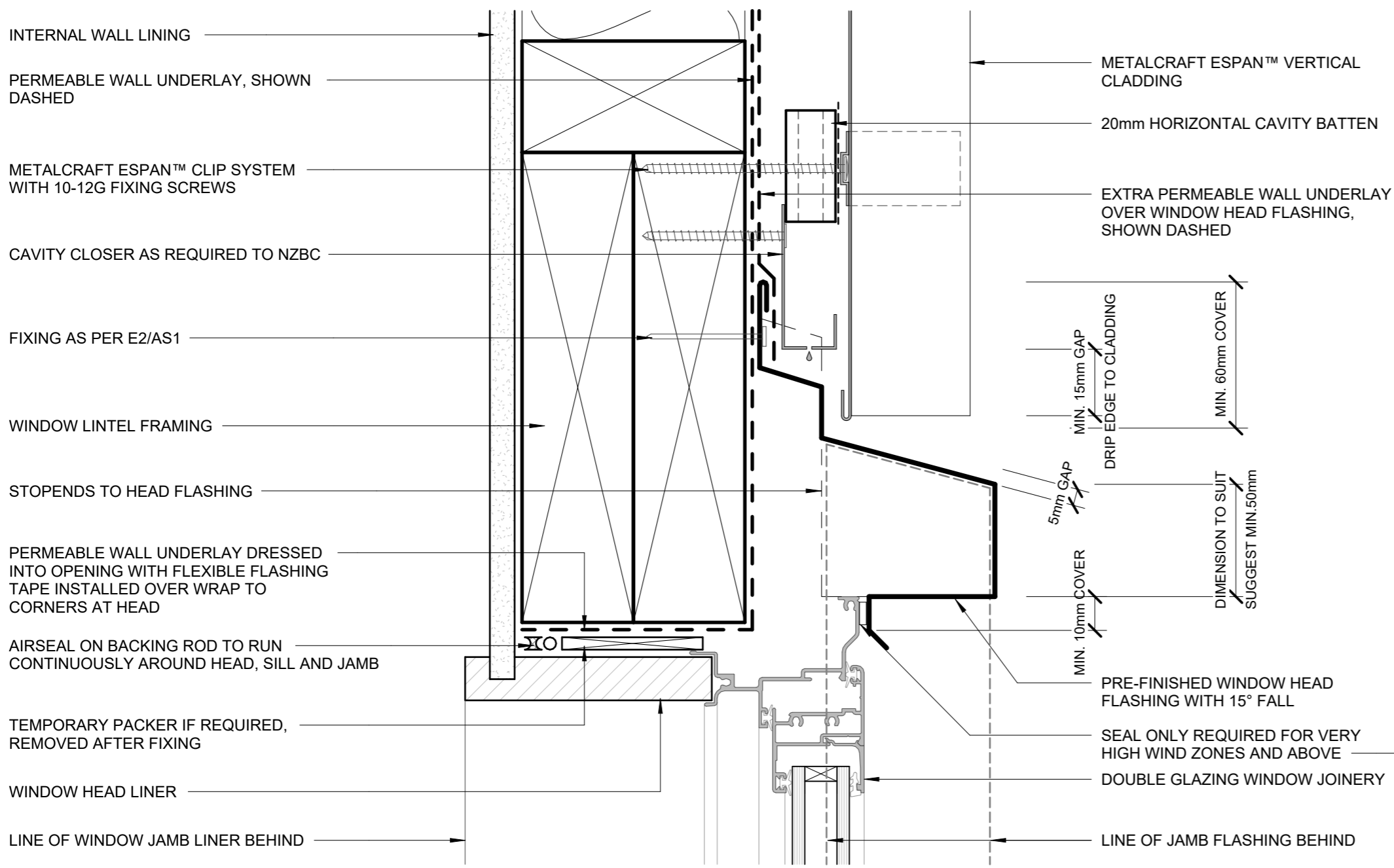


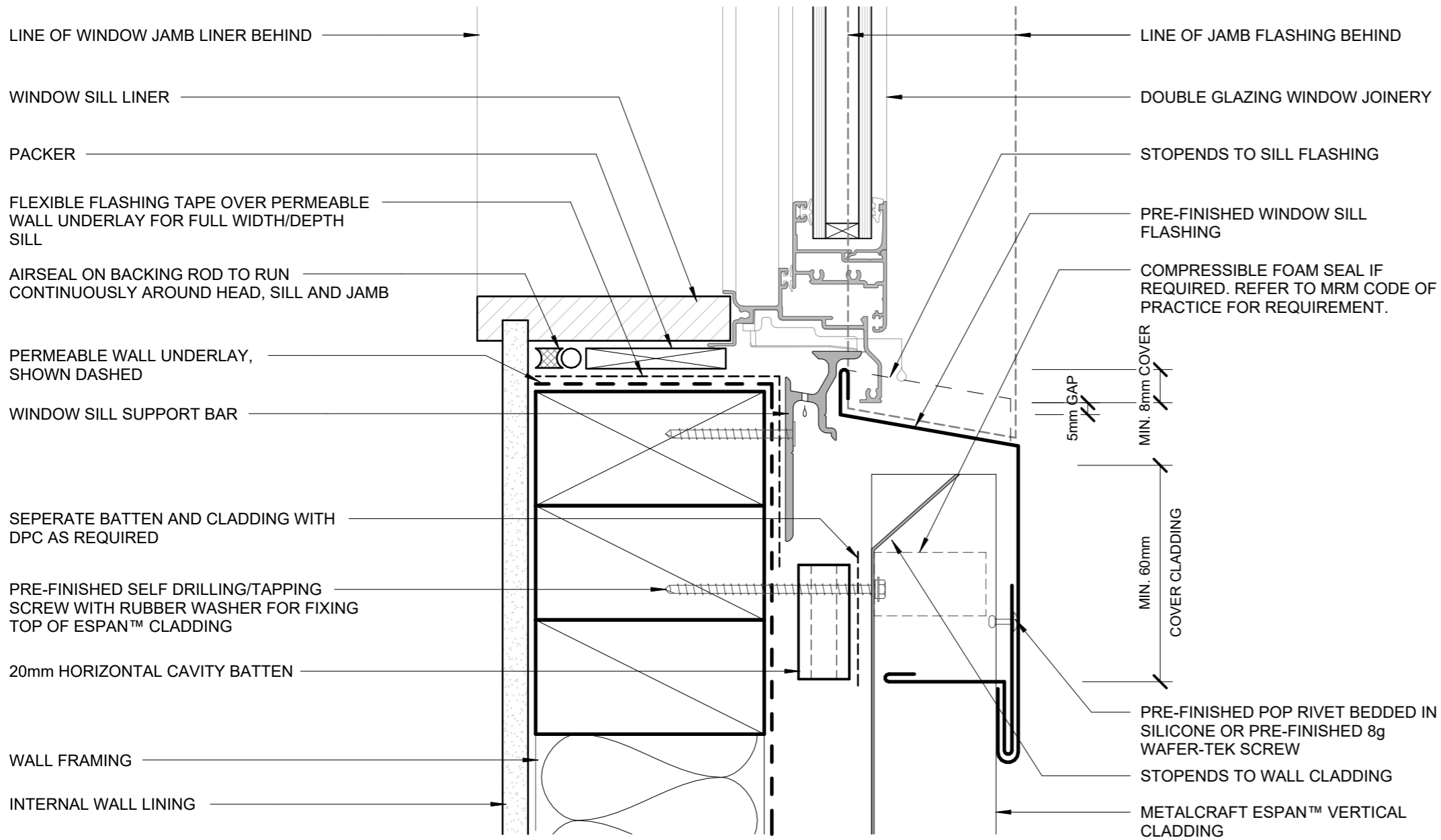
ALTERNATIVE OPTION



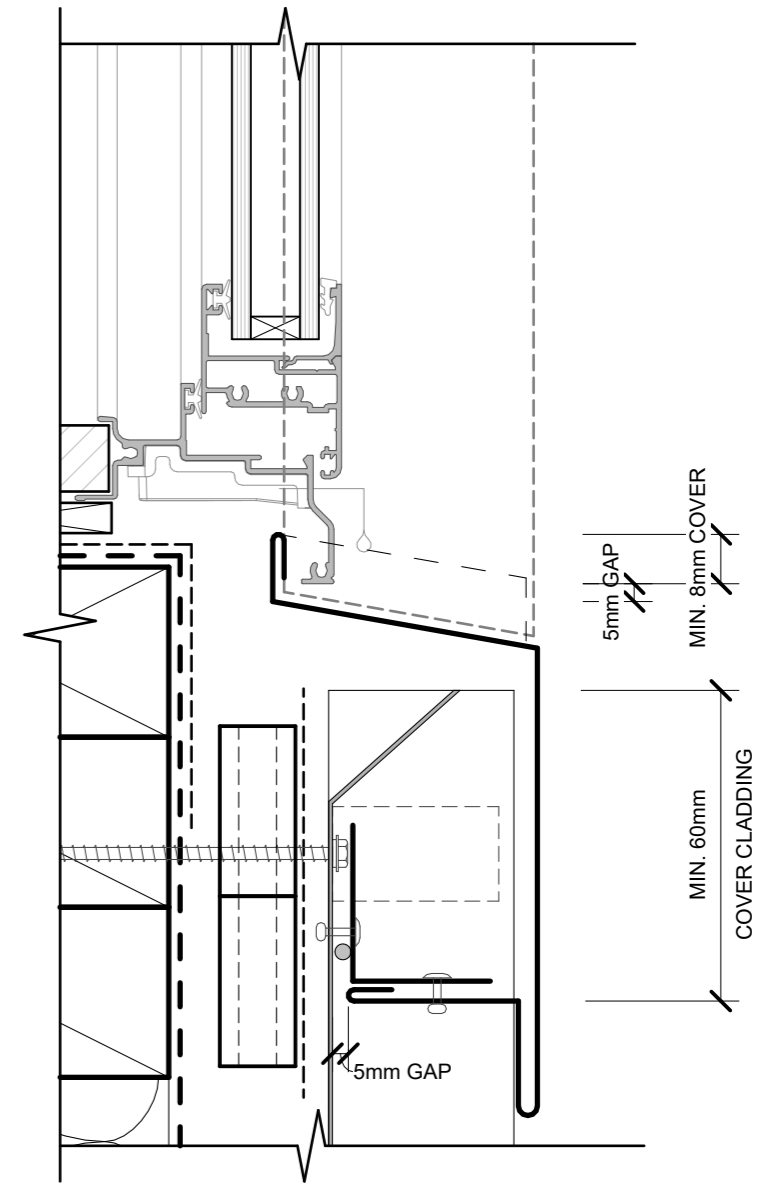


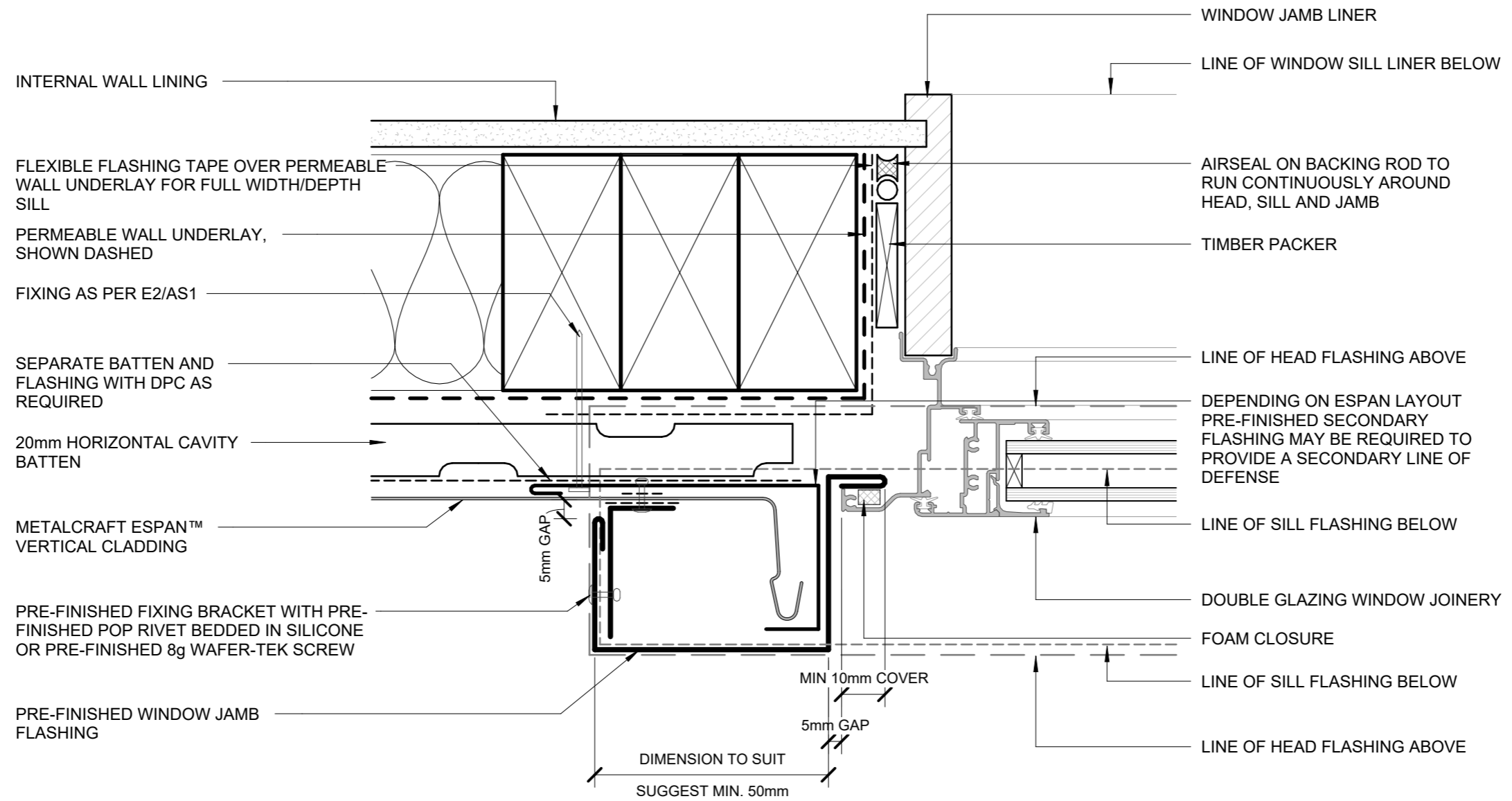


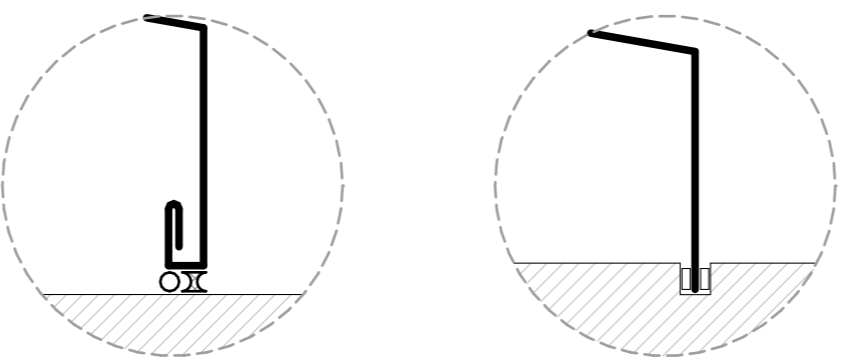
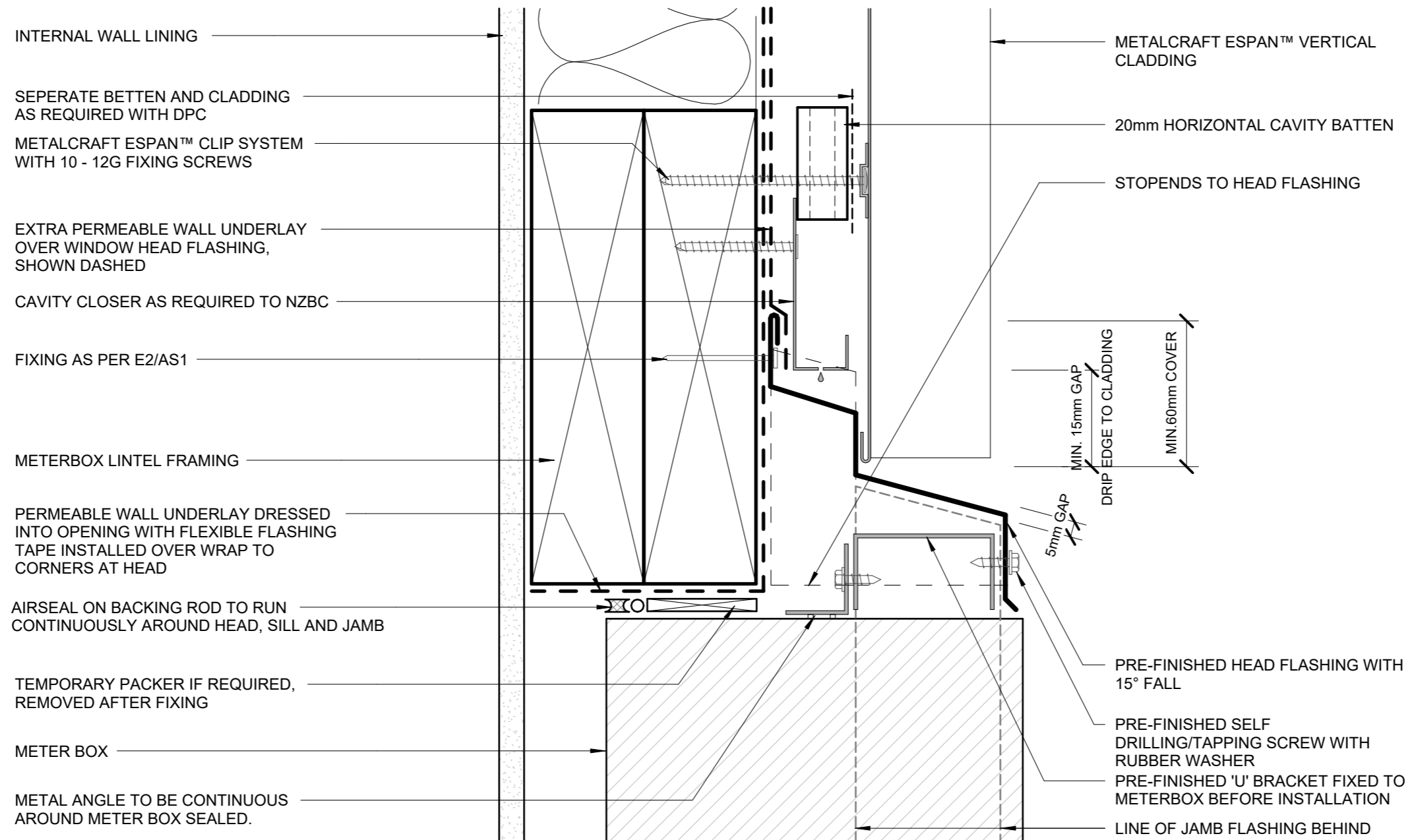


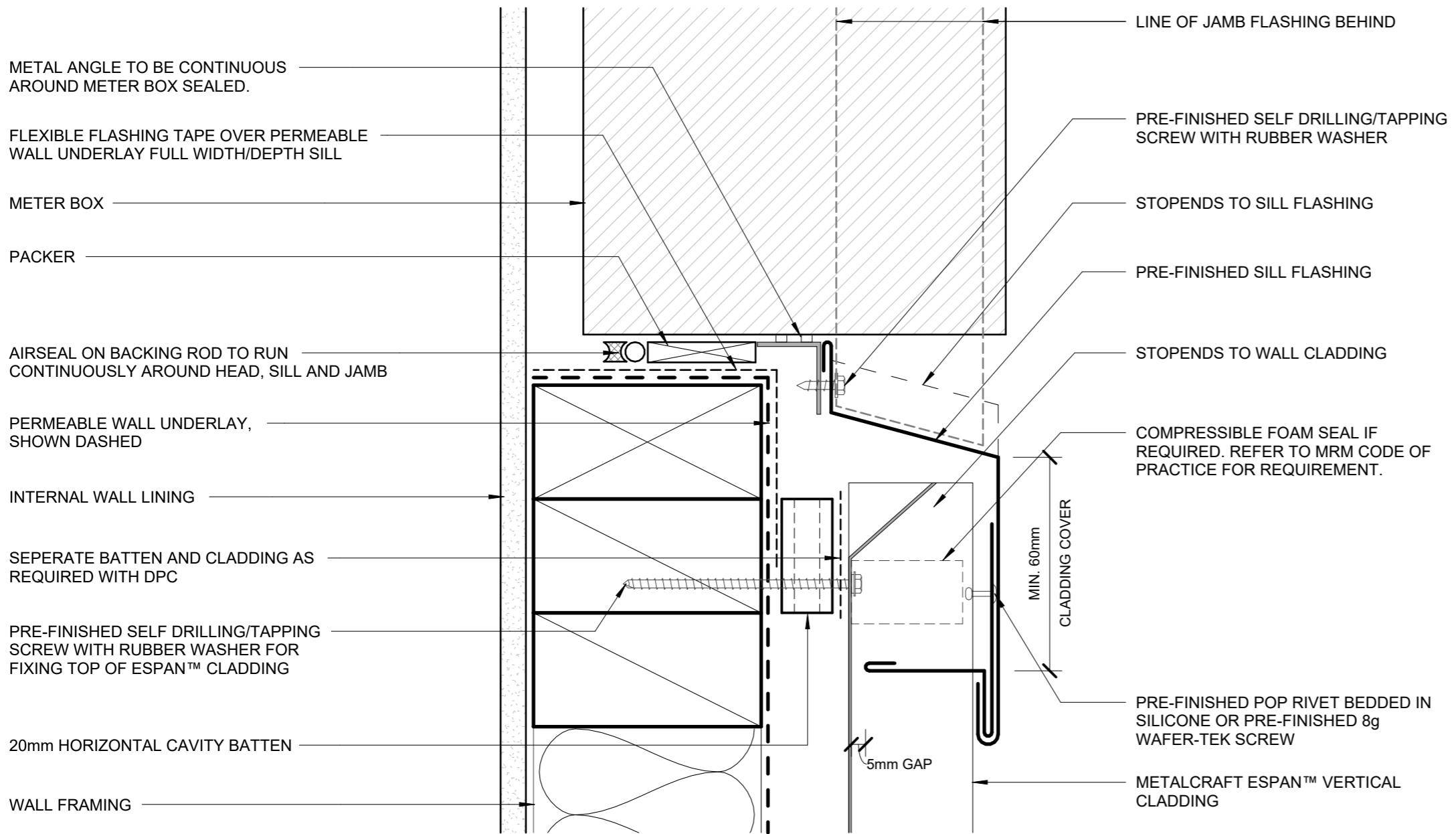


ALTERNATIVE OPTION

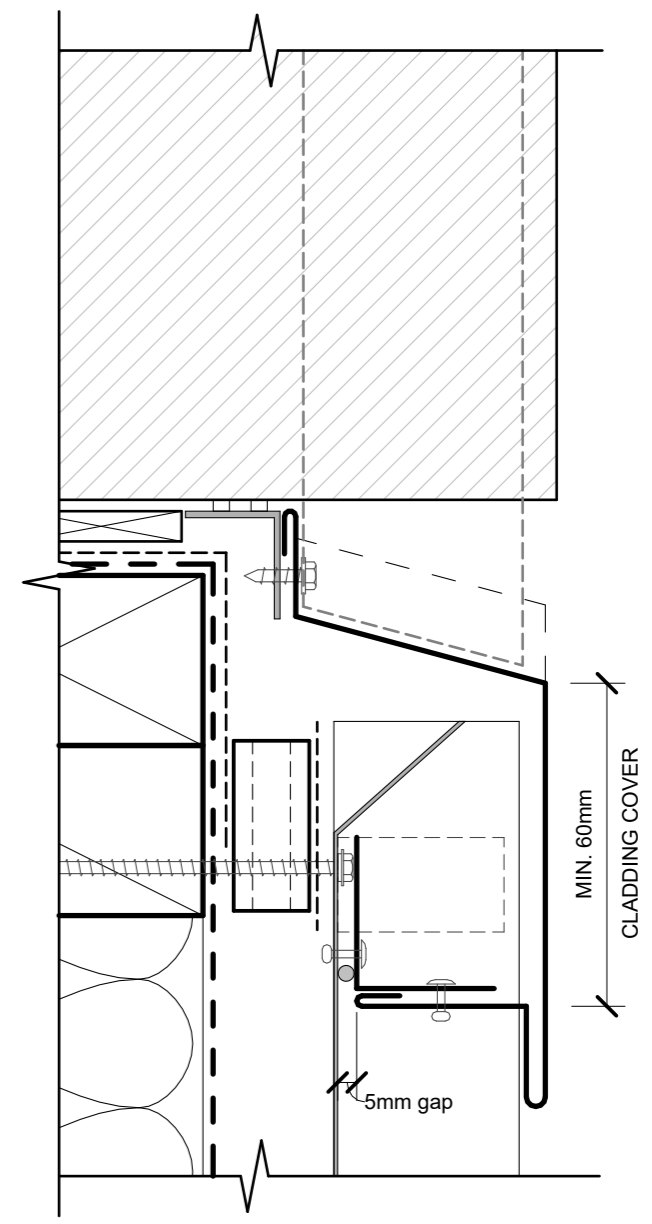


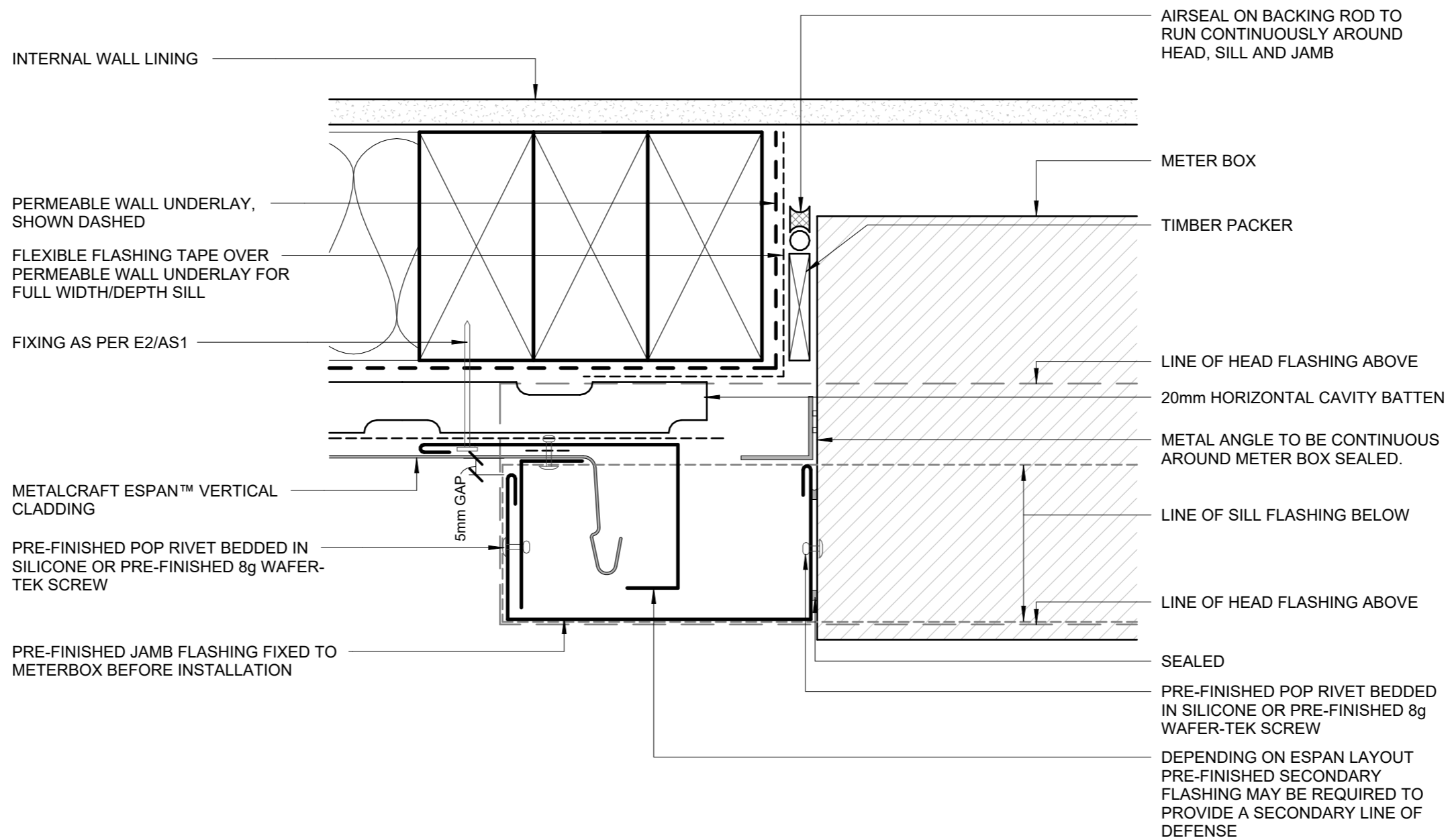


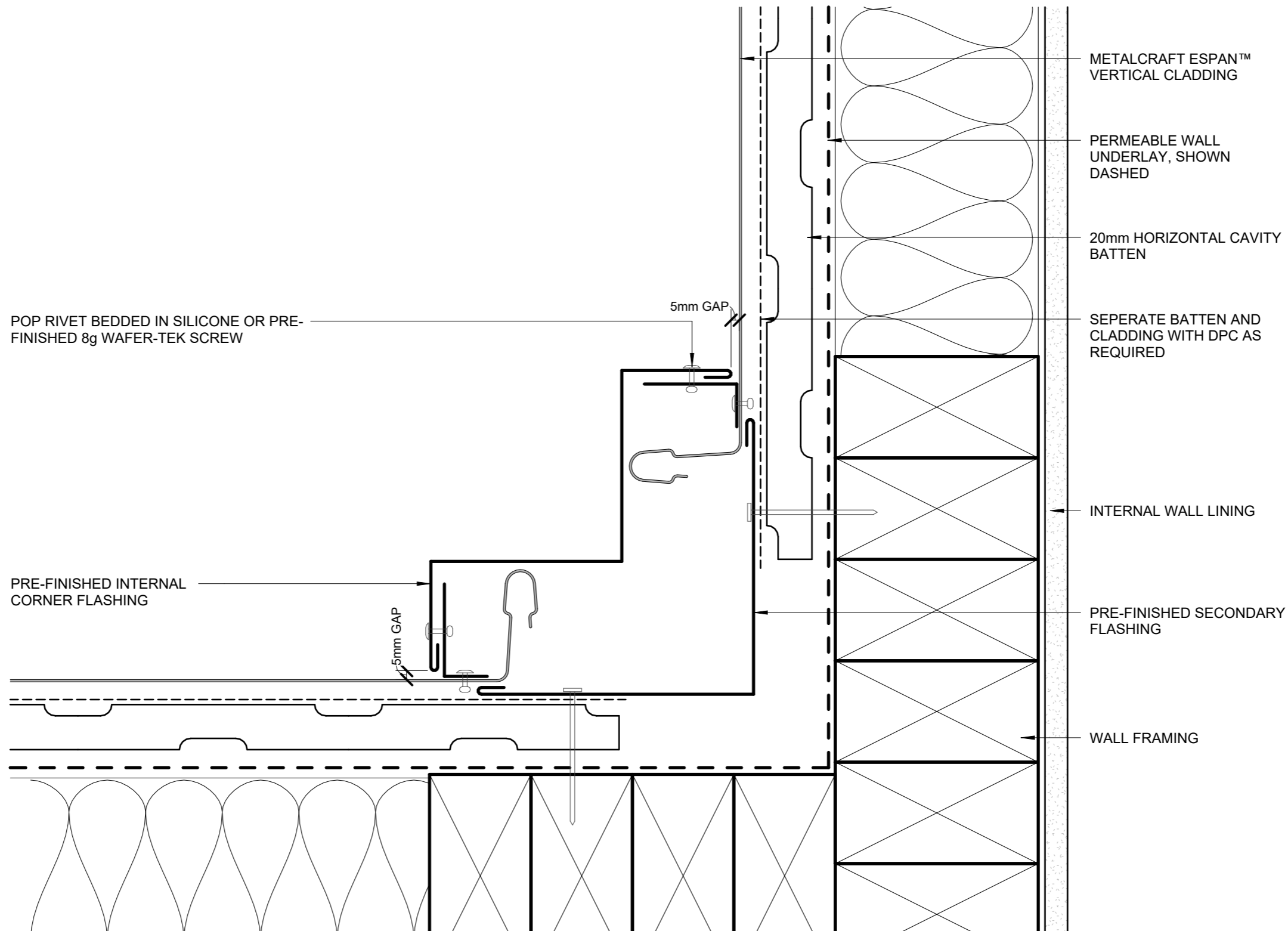




ALTERNATIVE OPTION







POP RIVET BEDDED IN SILICONE OR PRE-FINISHED 8g WAFER-TEK SCREW

5mm GAP

PRE-FINISHED INTERNAL CORNER FLASHING

5mm GAP

METALCRAFT ESPAN™ VERTICAL CLADDING

PERMEABLE WALL UNDERLAY, SHOWN DASHED

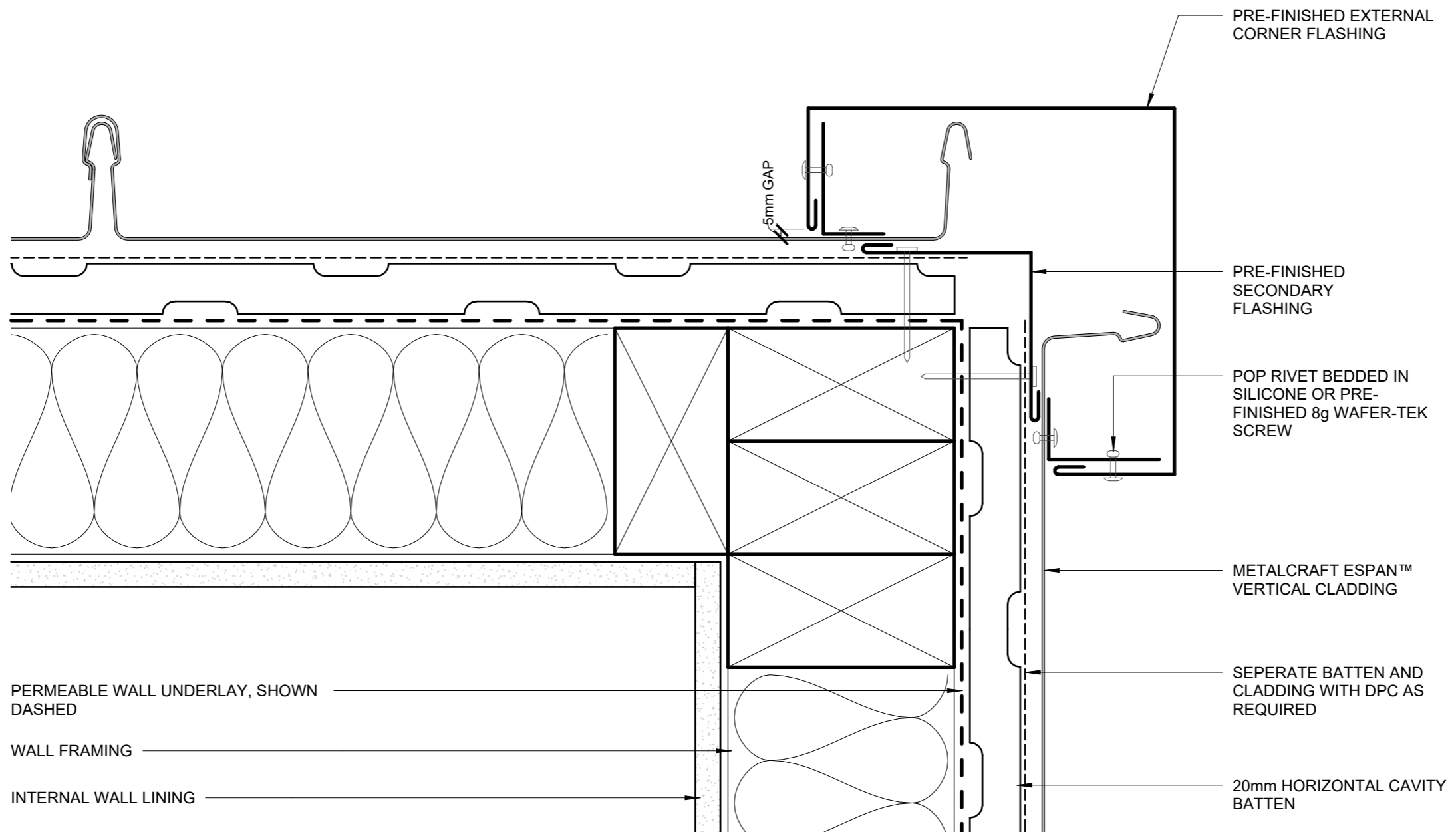
20mm HORIZONTAL CAVITY BATTEN

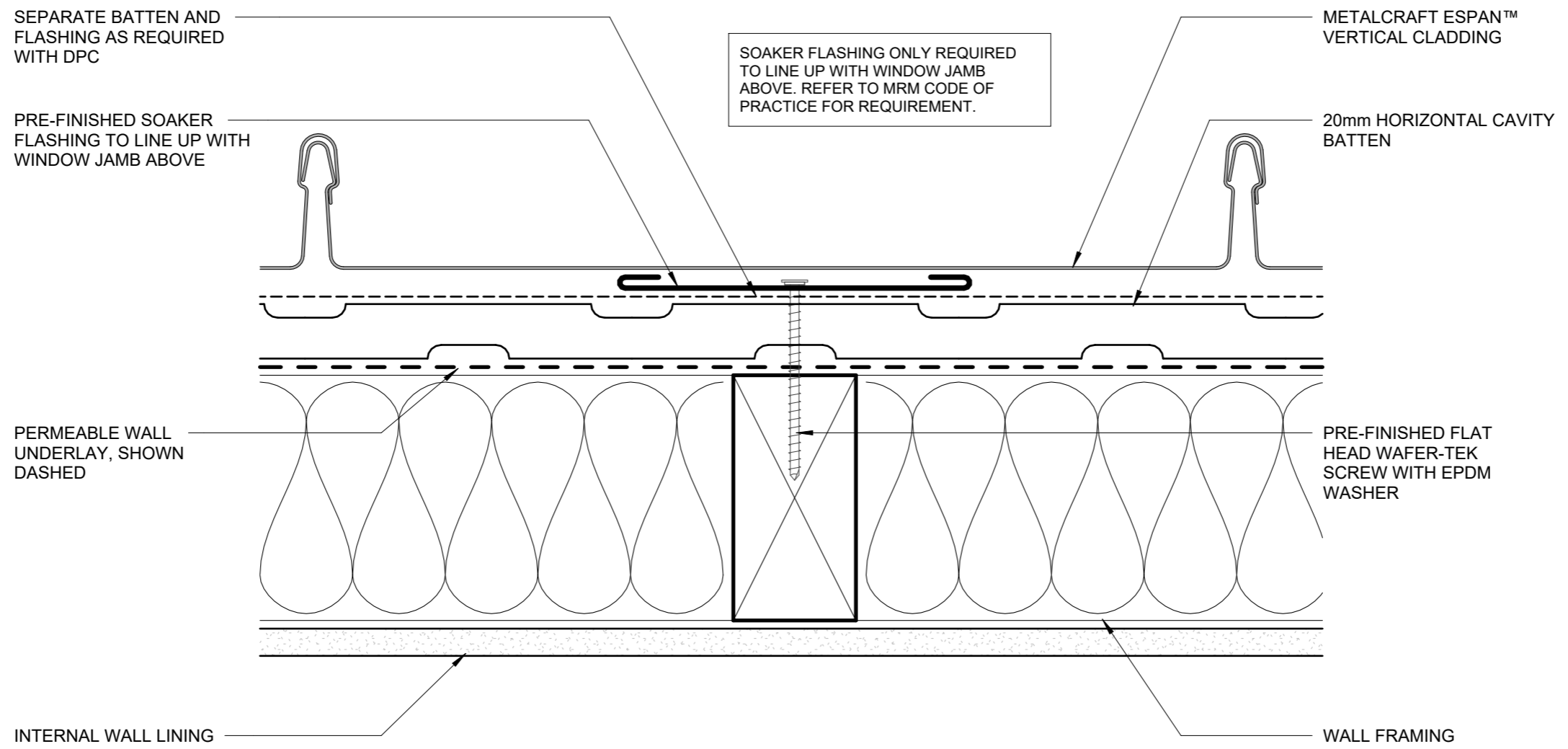
SEPERATE BATTEN AND CLADDING WITH DPC AS REQUIRED

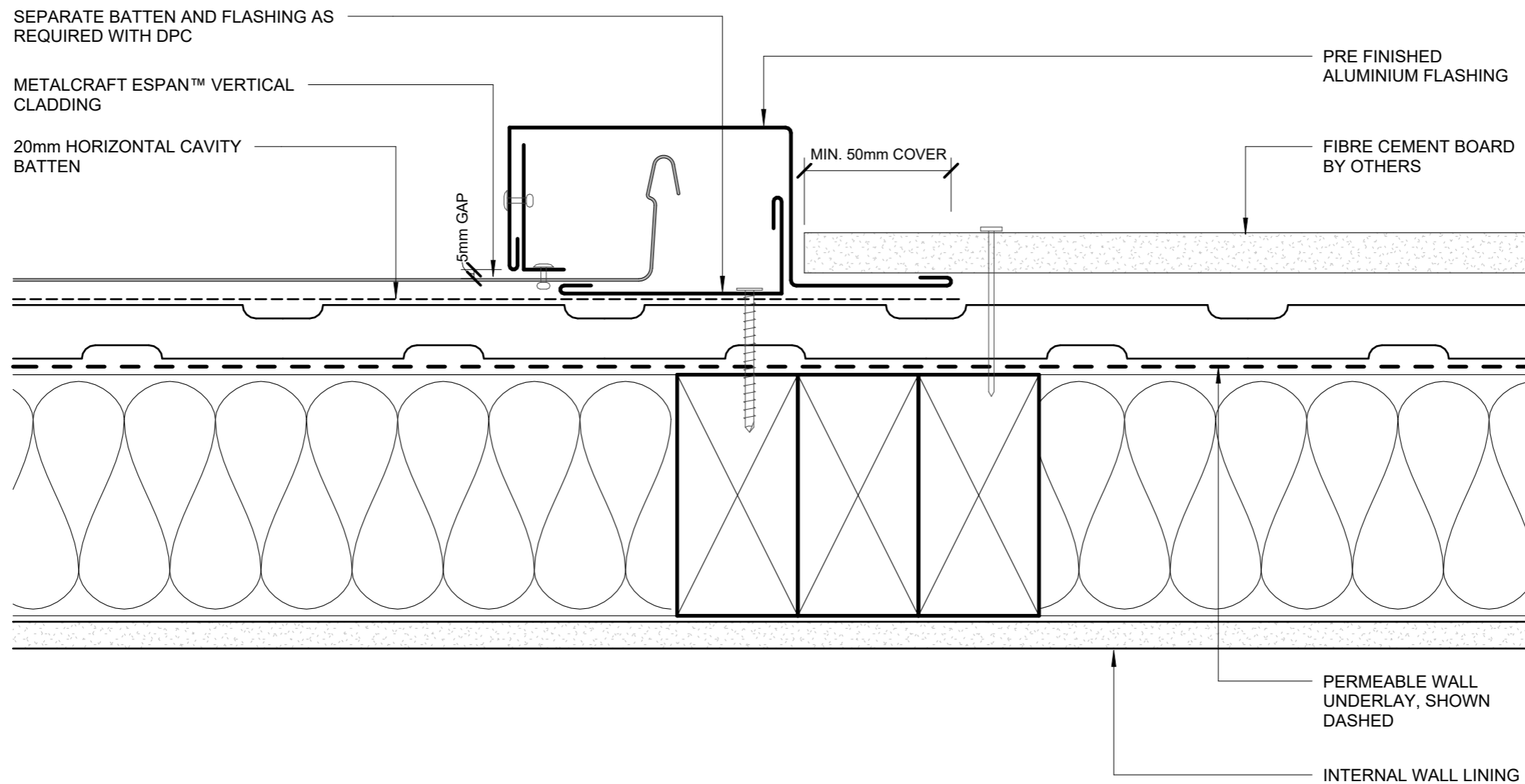
INTERNAL WALL LINING

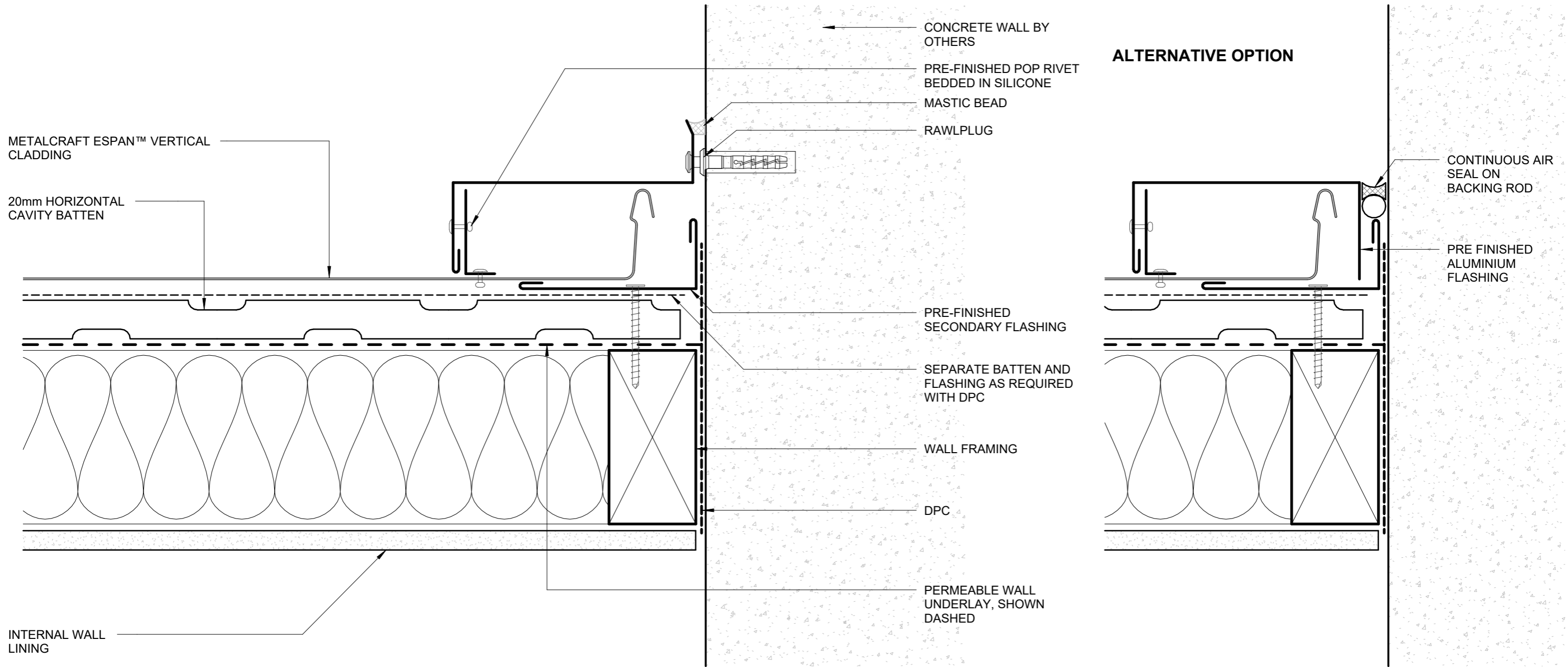
PRE-FINISHED SECONDARY FLASHING

WALL FRAMING









METALCRAFT ESPAN™ VERTICAL CLADDING

20mm HORIZONTAL CAVITY BATTEN

INTERNAL WALL LINING

CONCRETE WALL BY OTHERS

PRE-FINISHED POP RIVET BEDDED IN SILICONE

MASTIC BEAD

RAWLPLUG

PRE-FINISHED SECONDARY FLASHING

SEPARATE BATTEN AND FLASHING AS REQUIRED WITH DPC

WALL FRAMING

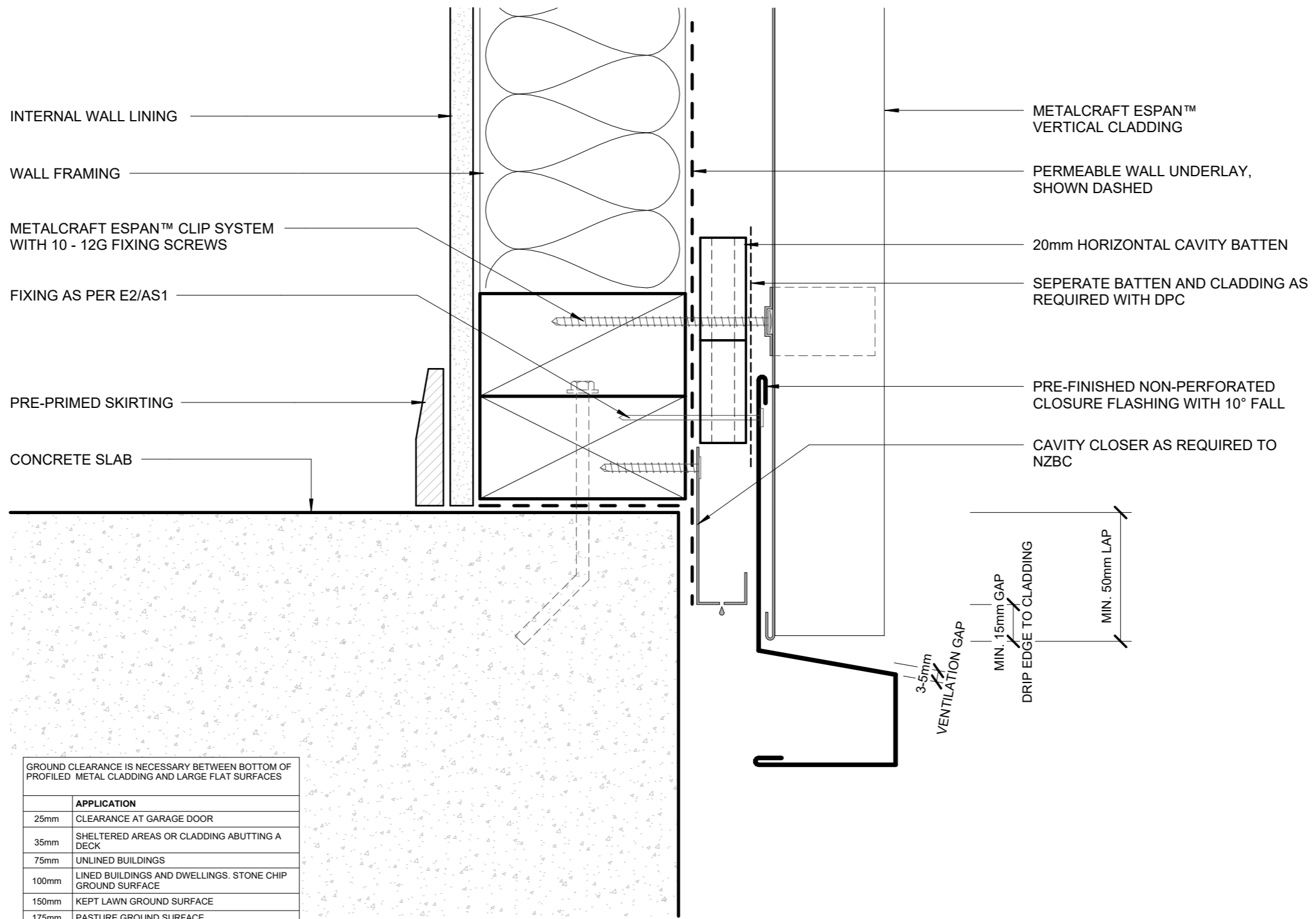
DPC

PERMEABLE WALL UNDERLAY, SHOWN DASHED

ALTERNATIVE OPTION

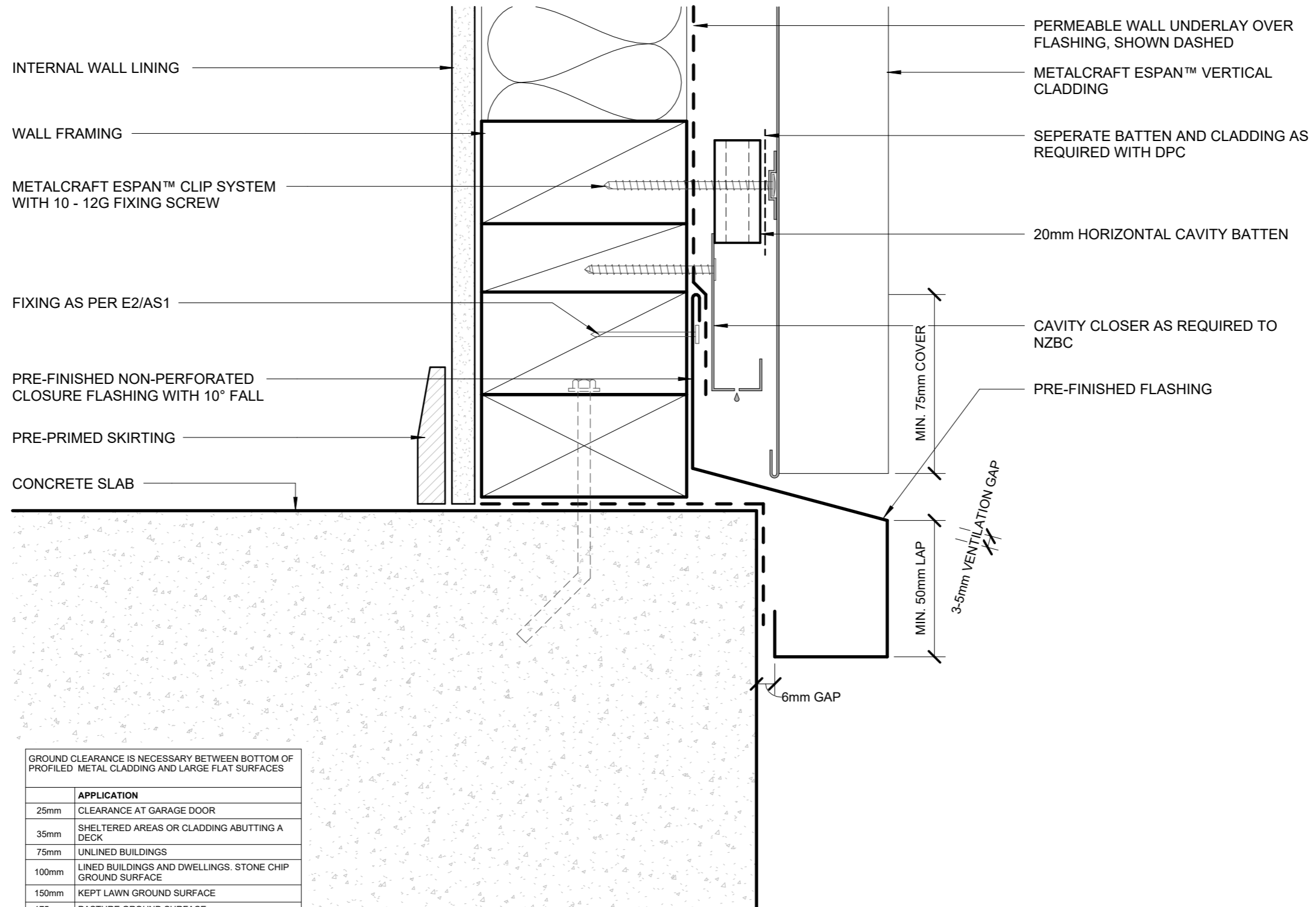
CONTINUOUS AIR SEAL ON BACKING ROD

PRE FINISHED ALUMINIUM FLASHING



GROUND CLEARANCE IS NECESSARY BETWEEN BOTTOM OF PROFILED METAL CLADDING AND LARGE FLAT SURFACES

	APPLICATION
25mm	CLEARANCE AT GARAGE DOOR
35mm	SHELTERED AREAS OR CLADDING ABUTTING A DECK
75mm	UNLINED BUILDINGS
100mm	LINED BUILDINGS AND DWELLINGS. STONE CHIP GROUND SURFACE
150mm	KEPT LAWN GROUND SURFACE
175mm	PASTURE GROUND SURFACE



GROUND CLEARANCE IS NECESSARY BETWEEN BOTTOM OF PROFILED METAL CLADDING AND LARGE FLAT SURFACES

	APPLICATION
25mm	CLEARANCE AT GARAGE DOOR
35mm	SHELTERED AREAS OR CLADDING ABUTTING A DECK
75mm	UNLINED BUILDINGS
100mm	LINED BUILDINGS AND DWELLINGS. STONE CHIP GROUND SURFACE
150mm	KEPT LAWN GROUND SURFACE
175mm	PASTURE GROUND SURFACE

RECESSED WINDOW FLASHINGS

