

Espan 340[®] / 470[®]

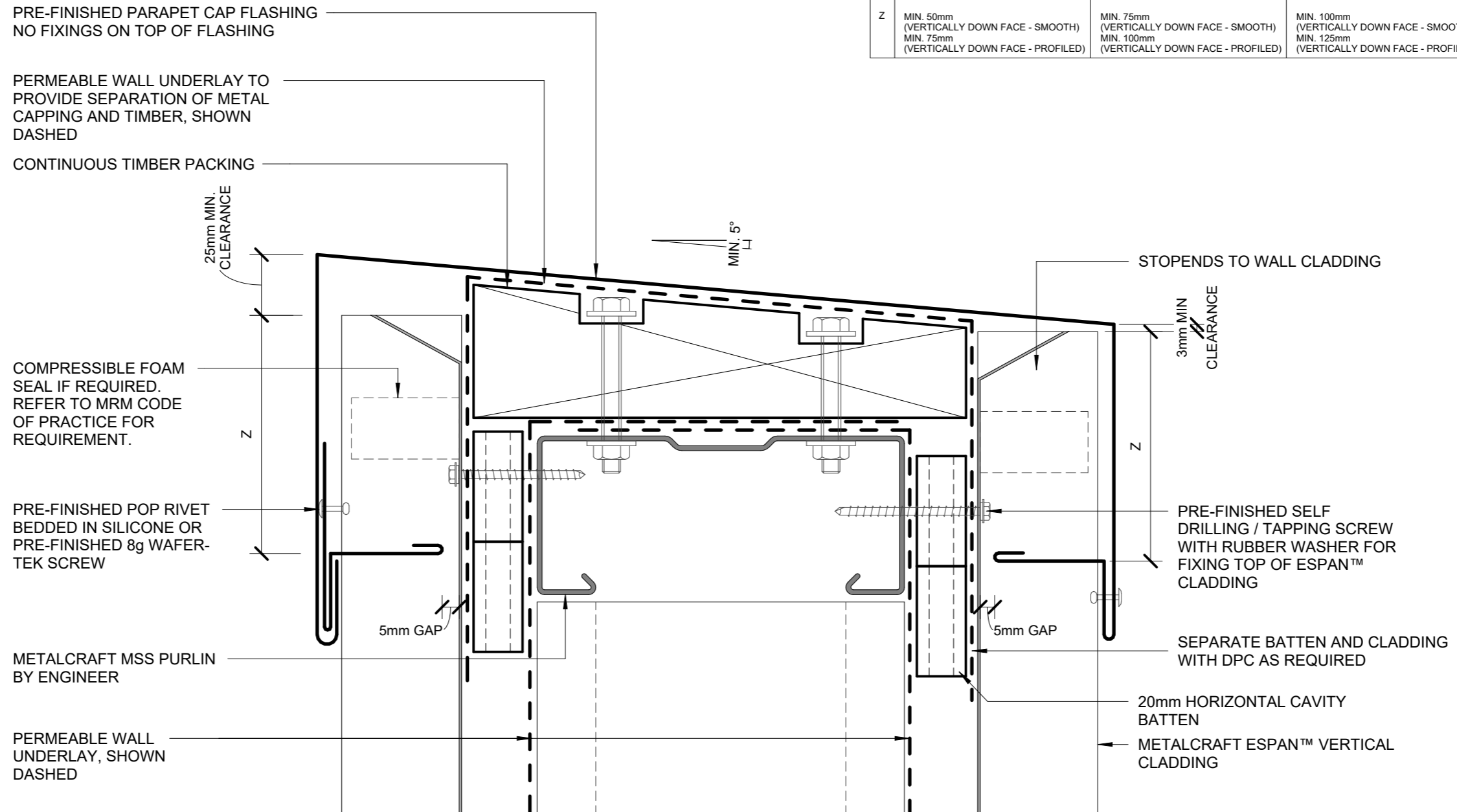
COMMERCIAL VERTICAL CLADDING

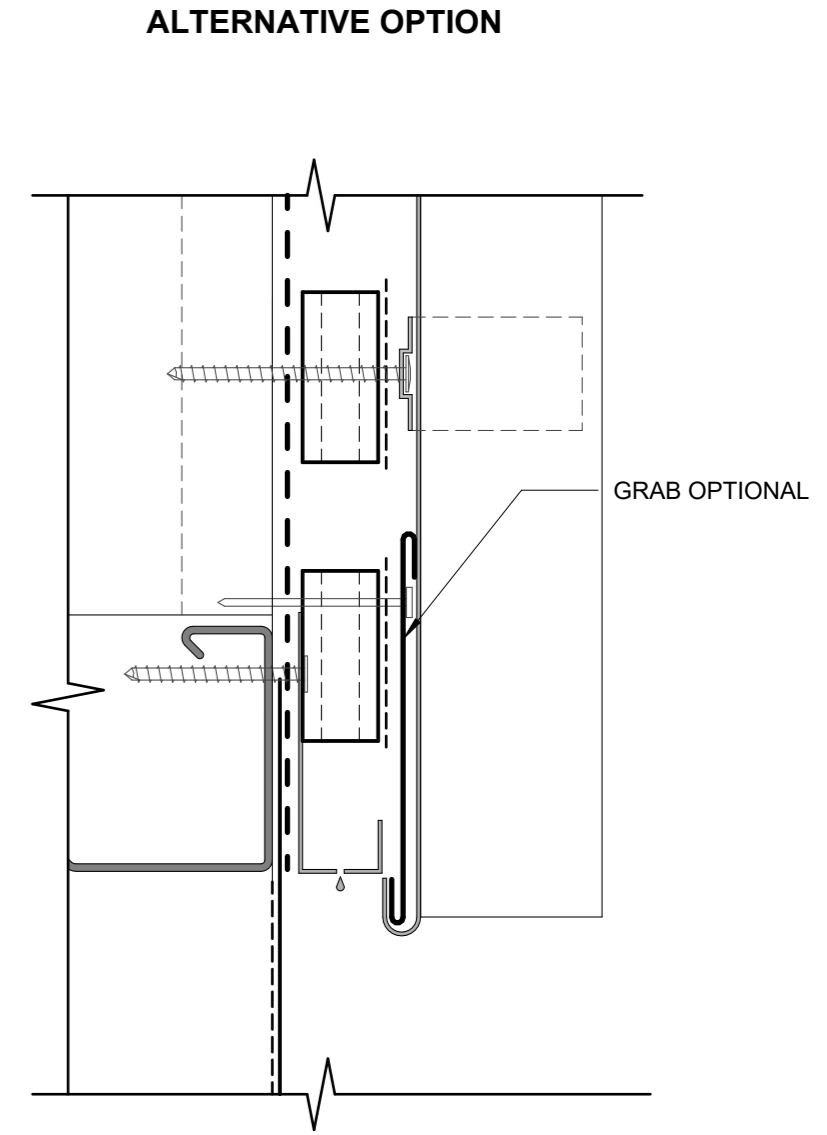
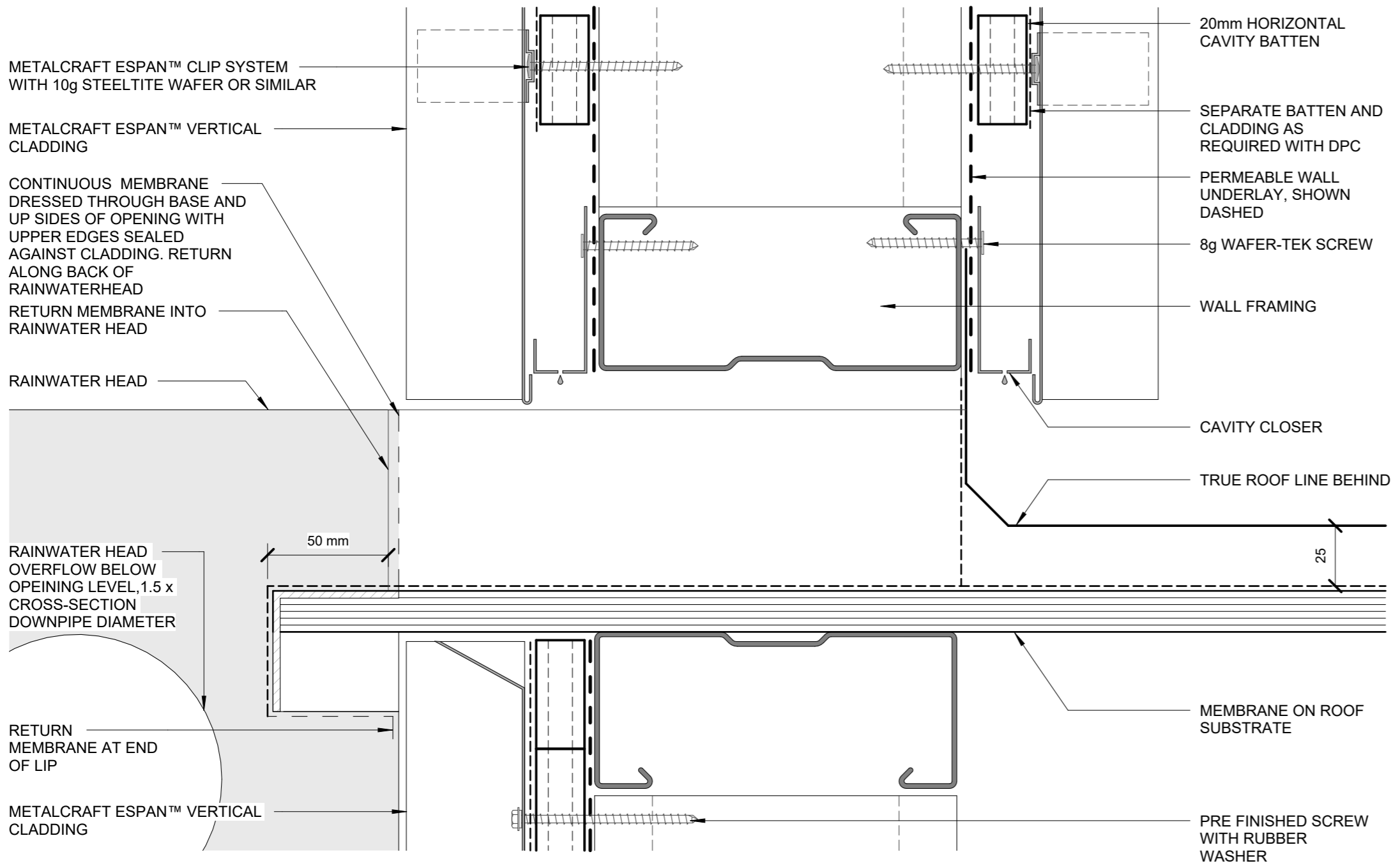
DETAIL LIST

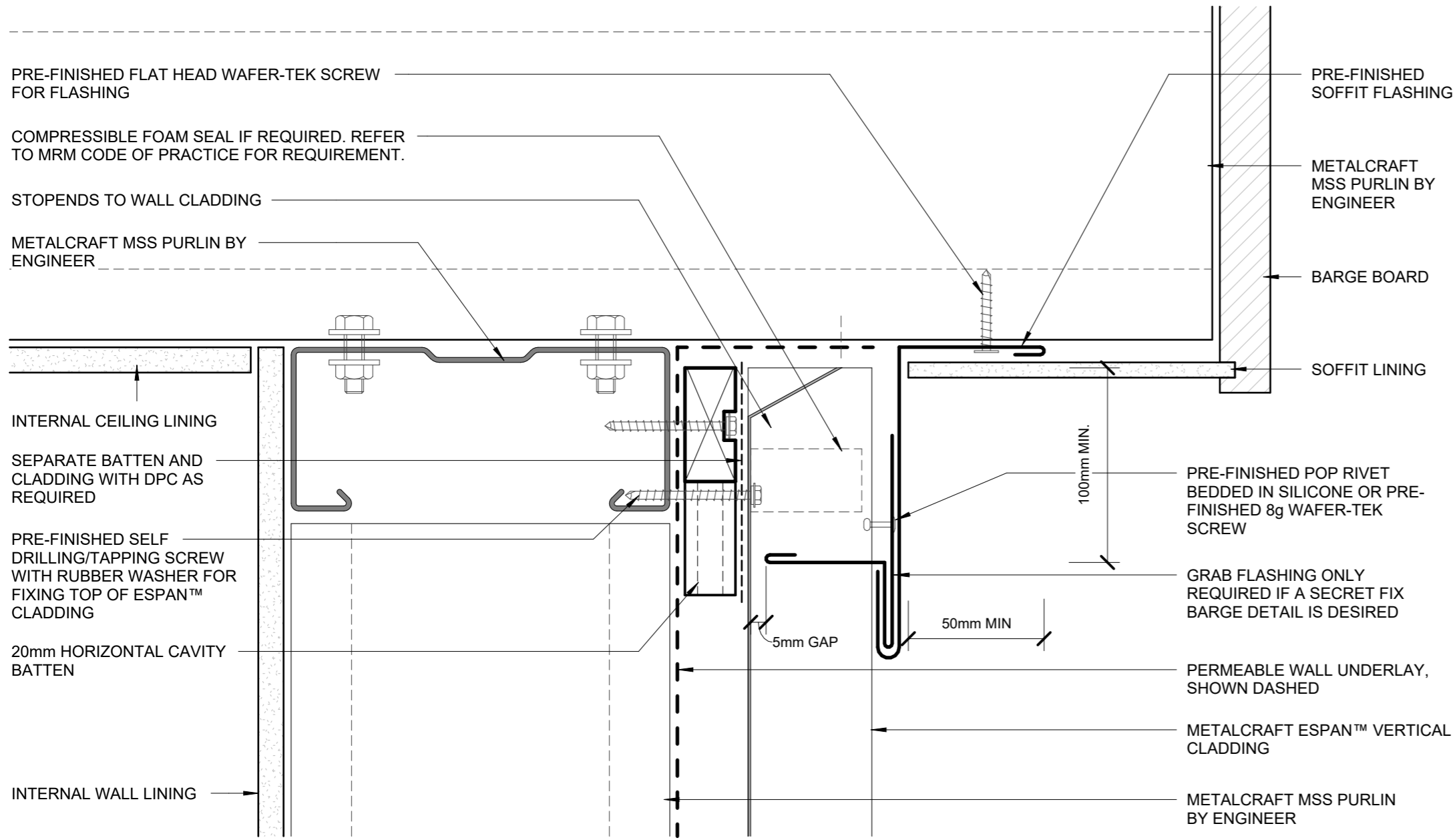
		<u>Revision</u>	<u>Date</u>
E 01	PARAPET AND BALUSTRADE CAPPING	3.0	DEC 2024
E 02	SCUPPER W/ RAINWATER HEAD	3.0	DEC 2024
E 03	SOFFIT	3.0	DEC 2024
E 04	BUTT WINDOW HEAD	3.0	DEC 2024
E 05	BUTT WINDOW SILL	3.0	DEC 2024
E 06	BUTT WINDOW JAMB	3.0	DEC 2024
E 07	RECESSED WINDOW HEAD	3.0	DEC 2024
E 08	RECESSED WINDOW SILL	3.0	DEC 2024
E 09	RECESSED WINDOW JAMB	3.0	DEC 2024
E 10	METERBOX HEAD	3.0	DEC 2024
E 11	METERBOX SILL	3.0	DEC 2024
E 12	METERBOX JAMB	3.0	DEC 2024
E 13	INTERNAL CORNER	3.0	DEC 2024
E 14	EXTERNAL CORNER	3.0	DEC 2024
E 15	SOAKER FLASHING	3.0	DEC 2024
E 16	CHANGE IN CLADDING	3.0	DEC 2024
E 17	CLADDING ABUTMENT	3.0	DEC 2024
E 18	BOTTOM OF CLADDING (FLUSH)	3.0	DEC 2024
E 19	BOTTOM OF CLADDING (RECESSED)	3.0	DEC 2024
E 20	3D WINDOW FLASHINGS	3.0	DEC 2024
E 21	3D RAINWATER HEAD	3.0	DEC 2024

AS PER E2/ASI			
	SITUATION 1	SITUATION 2	SITUATION 3
	1. LOW, MEDIUM, HIGH WIND ZONES, WHERE ROOF PITCH $\geq 10^\circ$	1. ALL ROOF PITCHES IN VERY HIGH WIND ZONE 2. LOW, MEDIUM, HIGH WIND ZONES WHERE ROOF PITCH $\leq 10^\circ$	1. FOR ALL ROOF PITCHES IN EXTRA HIGH WIND ZONES
Z	MIN. 50mm	MIN. 70mm	MIN. 90mm

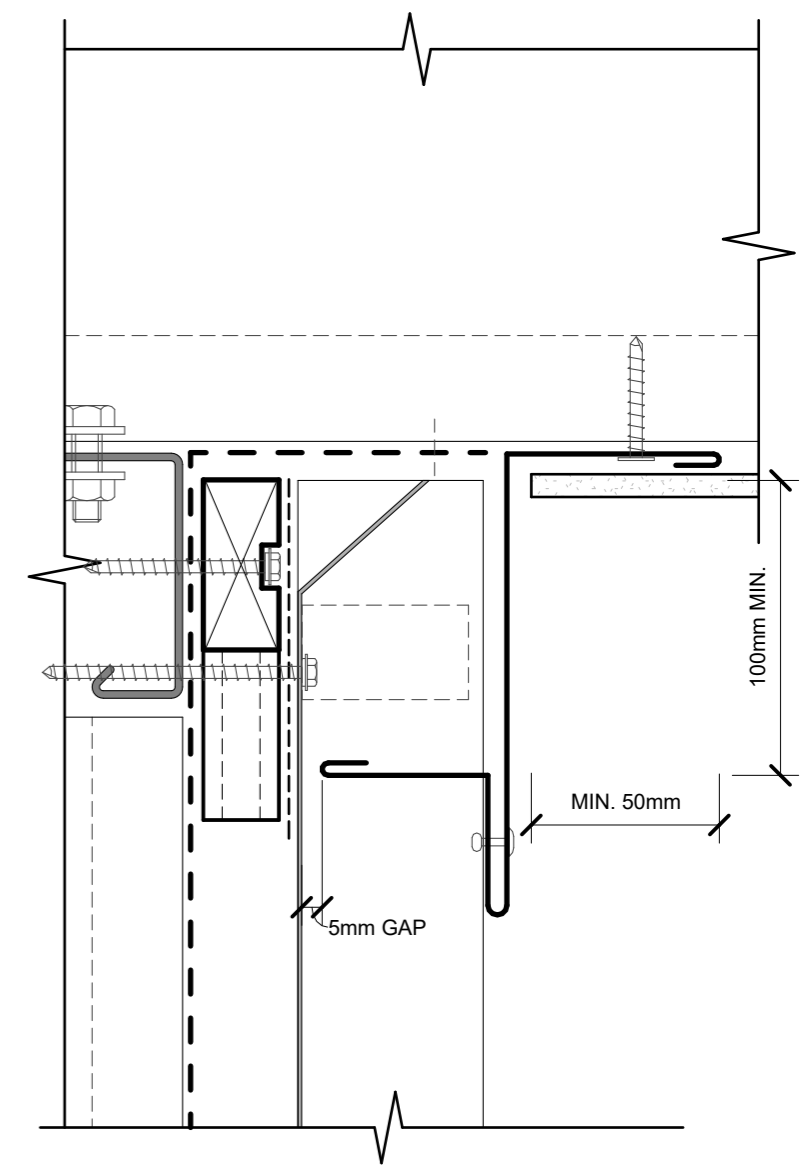
AS PER MRM CODE OF PRACTICE				
	CATEGORY A	CATEGORY B	CATEGORY C	CATEGORY D
	LOW, MEDIUM OR HIGH WIND ZONES - ALL ROOF PITCHES VERY HIGH AND EXTRA HIGH WIND ZONES WHERE THE PITCH IS EQUAL TO OR GREATER THAN 10°	VERY HIGH WIND ZONES ROOF PITCH $< 8^\circ$ EXTRA HIGH WIND ZONES - ALL ROOF PITCHES	SED WIND ZONES UP TO 60 m/s ALL ROOF PITCH	SED WIND ZONES UP TO 68 m/s ALL ROOF PITCH
Z	MIN. 50mm (VERTICALLY DOWN FACE - SMOOTH) MIN. 75mm (VERTICALLY DOWN FACE - PROFILED)	MIN. 75mm (VERTICALLY DOWN FACE - SMOOTH) MIN. 100mm (VERTICALLY DOWN FACE - PROFILED)	MIN. 100mm (VERTICALLY DOWN FACE - SMOOTH) MIN. 125mm (VERTICALLY DOWN FACE - PROFILED)	MIN. 100mm (VERTICALLY DOWN FACE - SMOOTH) MIN. 125mm (VERTICALLY DOWN FACE - PROFILED)

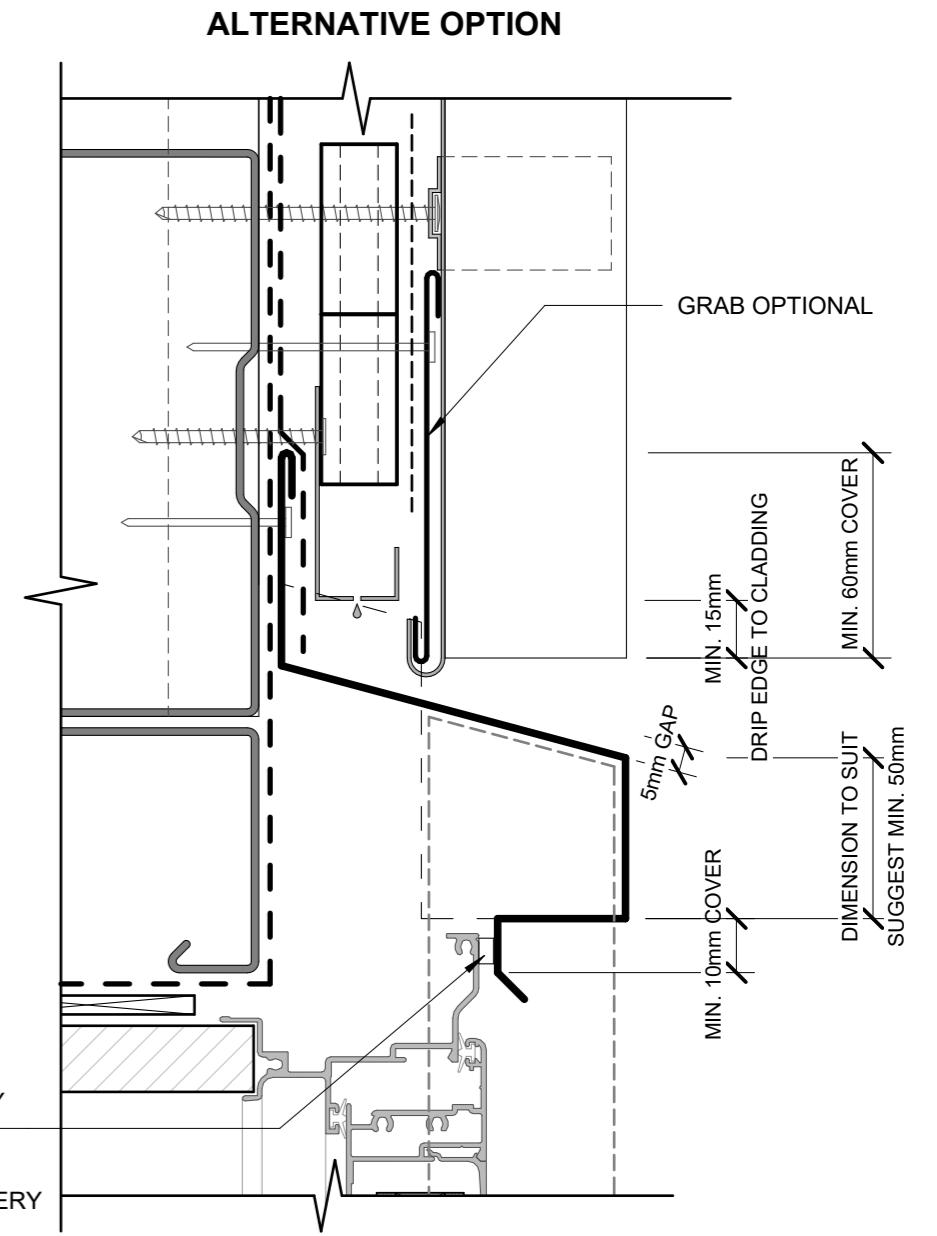
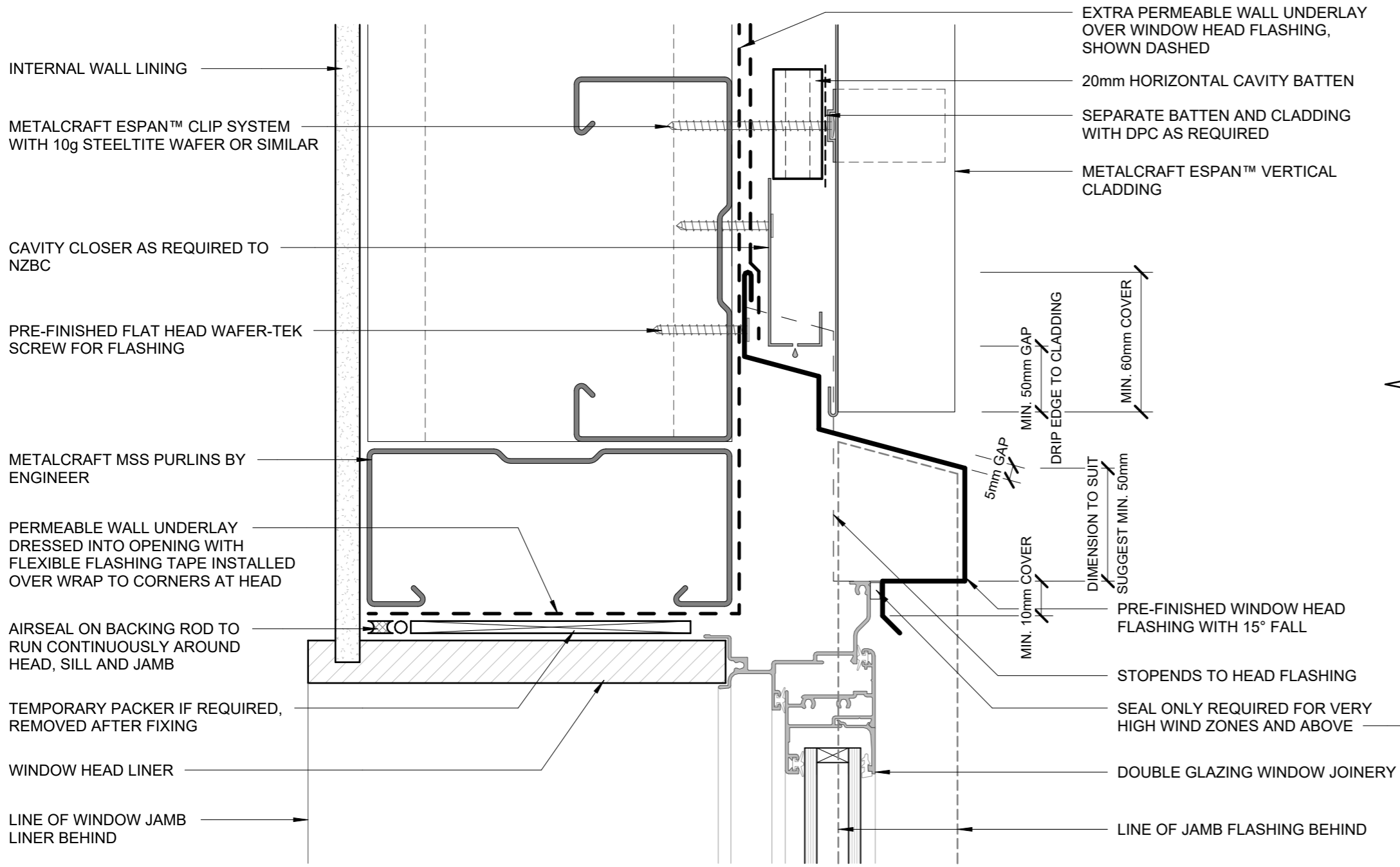


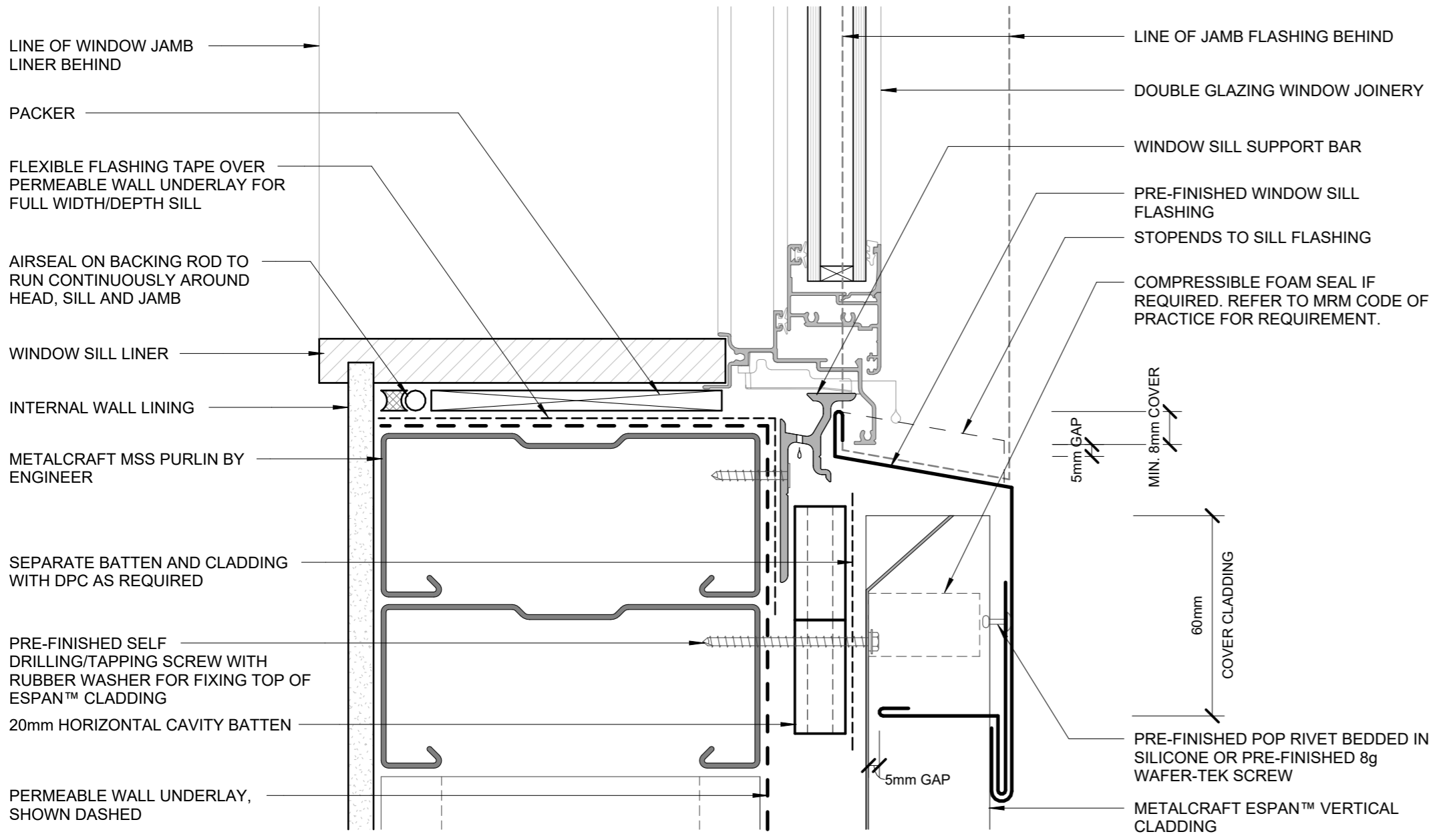




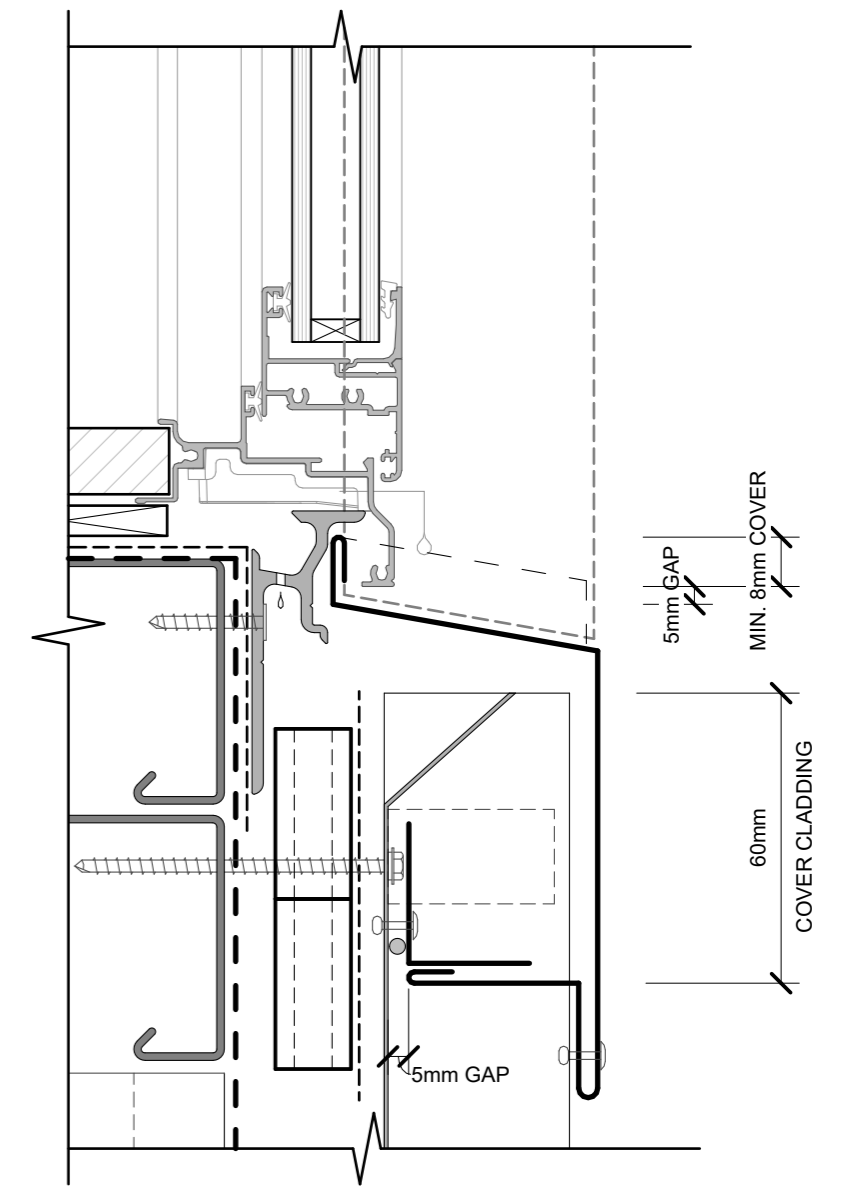
ALTERNATIVE OPTION

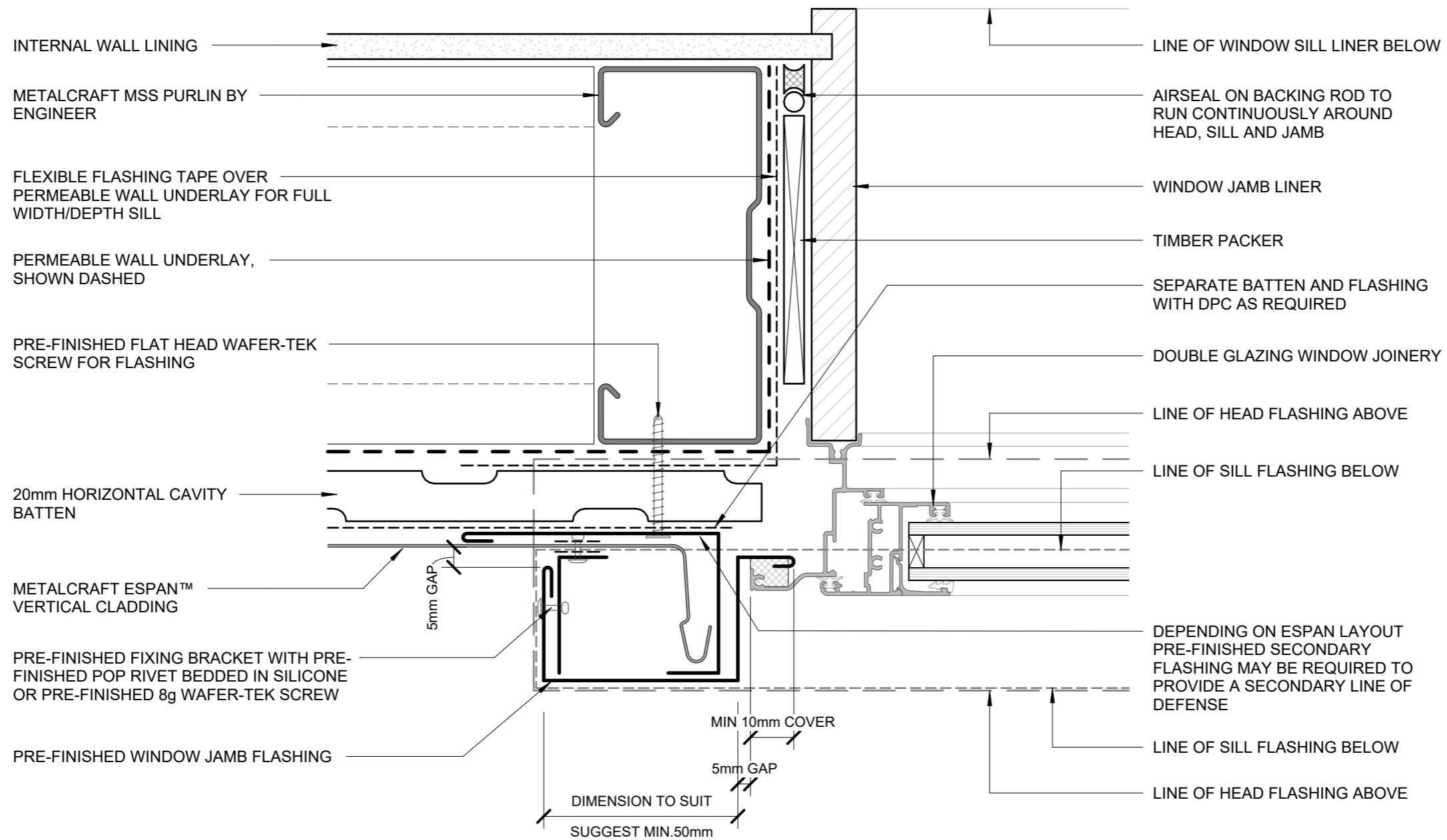






ALTERNATIVE OPTION





INTERNAL WALL LINING

METALCRAFT ESPAN™ CLIP SYSTEM WITH 10g STEELTITE WAFER OR SIMILAR

CAVITY CLOSER AS REQUIRED TO NZBC

PRE-FINISHED FLAT HEAD WAFER-TEK SCREW FOR FLASHING

METALCRAFT MSS PURLINS BY ENGINEER

PERMEABLE WALL UNDERLAY DRESSED INTO OPENING WITH FLEXIBLE FLASHING TAPE INSTALLED OVER WRAP TO CORNERS AT HEAD

AIRSEAL ON BACKING ROD TO RUN CONTINUOUSLY AROUND HEAD, SILL AND JAMB

TEMPORARY PACKER IF REQUIRED, REMOVED AFTER FIXING

WINDOW HEAD LINER

LINE OF WINDOW JAMB LINER BEHIND

20mm HORIZONTAL CAVITY BATTEN

SEPARATE BATTEN AND CLADDING WITH DPC AS REQUIRED

METALCRAFT ESPAN™ VERTICAL CLADDING

EXTRA PERMEABLE WALL UNDERLAY OVER WINDOW HEAD FLASHING, SHOWN DASHED

MIN 15mm GAP

MIN 60mm COVER

DRIP EDGE TO CLADDING

5mm GAP

MIN 10mm COVER

DIMENSION TO SUIT SUGGEST MIN. 50mm

PRE-FINISHED WINDOW HEAD FLASHING WITH 15° FALL

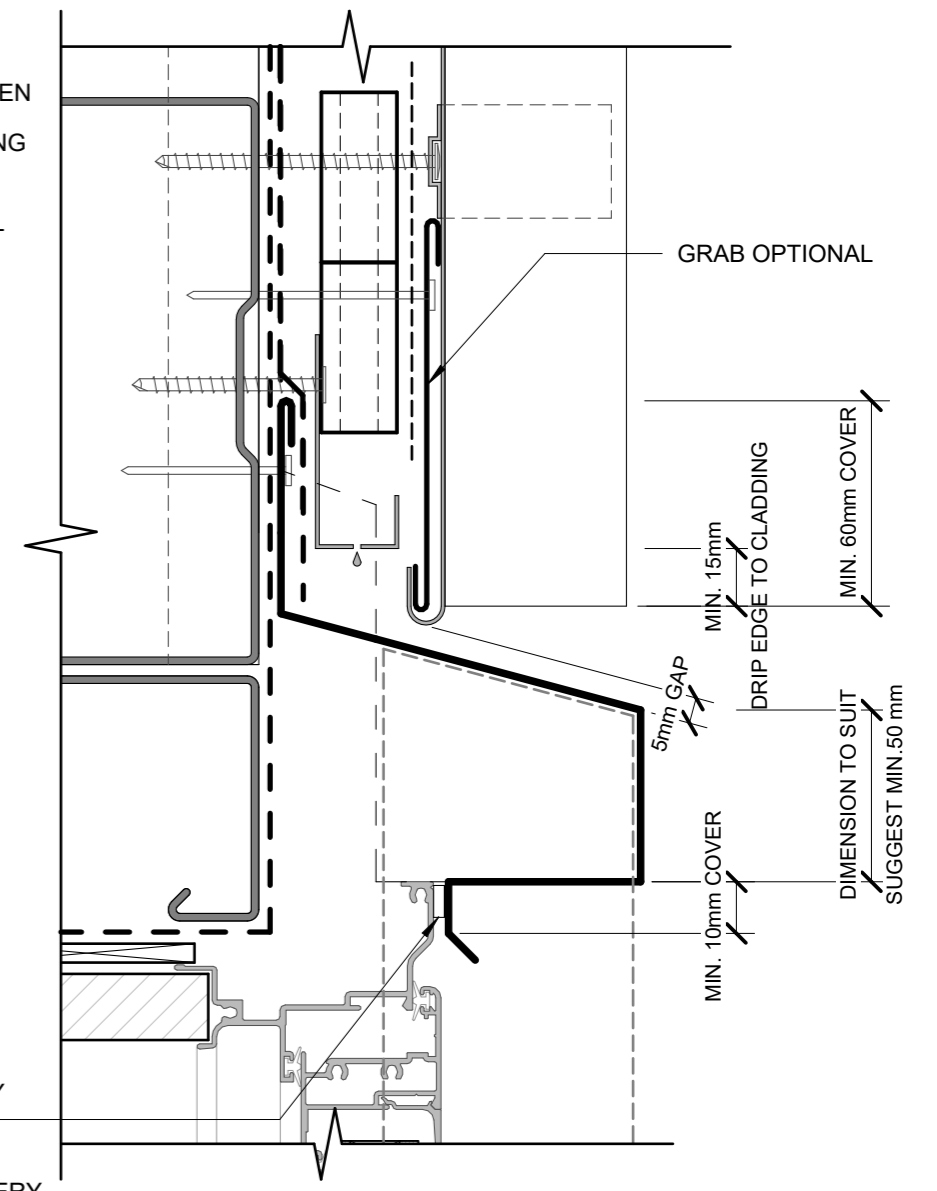
STOPENDS TO HEAD FLASHING

SEAL ONLY REQUIRED FOR VERY HIGH WIND ZONES AND ABOVE

DOUBLE GLAZING WINDOW JOINERY

LINE OF JAMB FLASHING BEHIND

ALTERNATIVE OPTION



GRAB OPTIONAL

MIN. 15mm

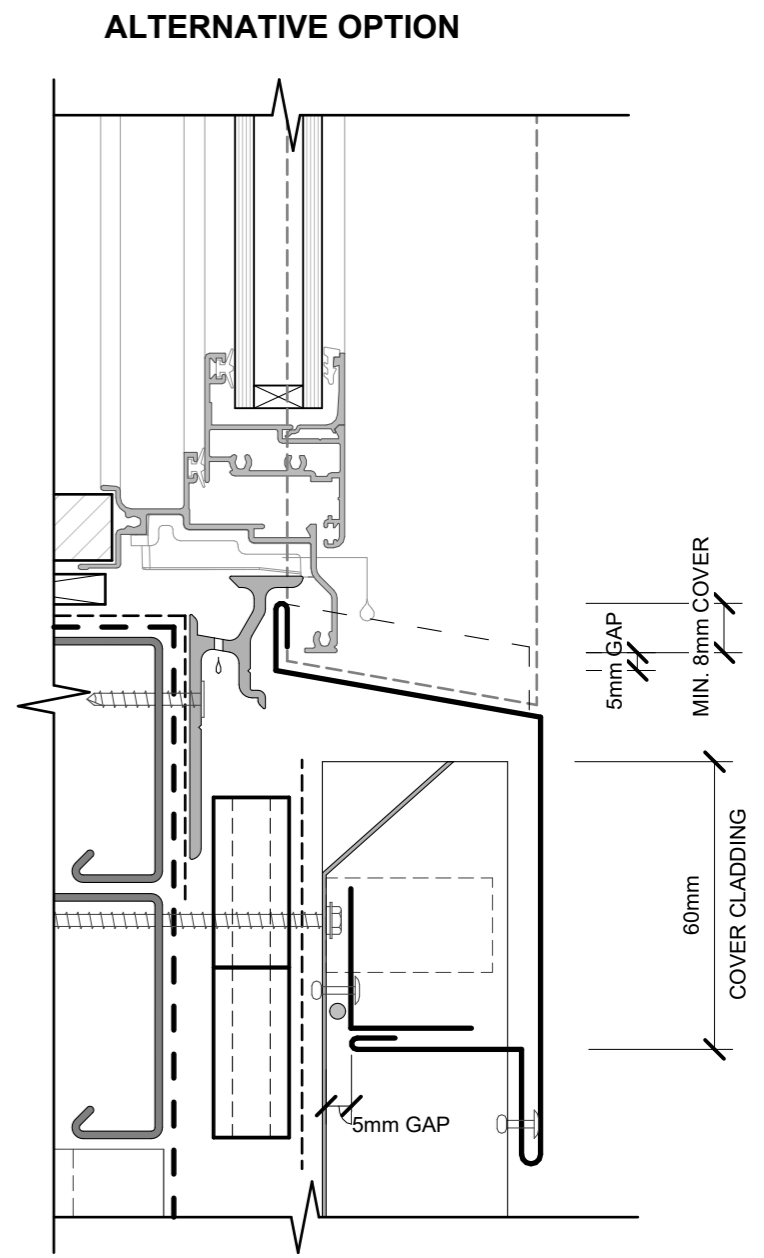
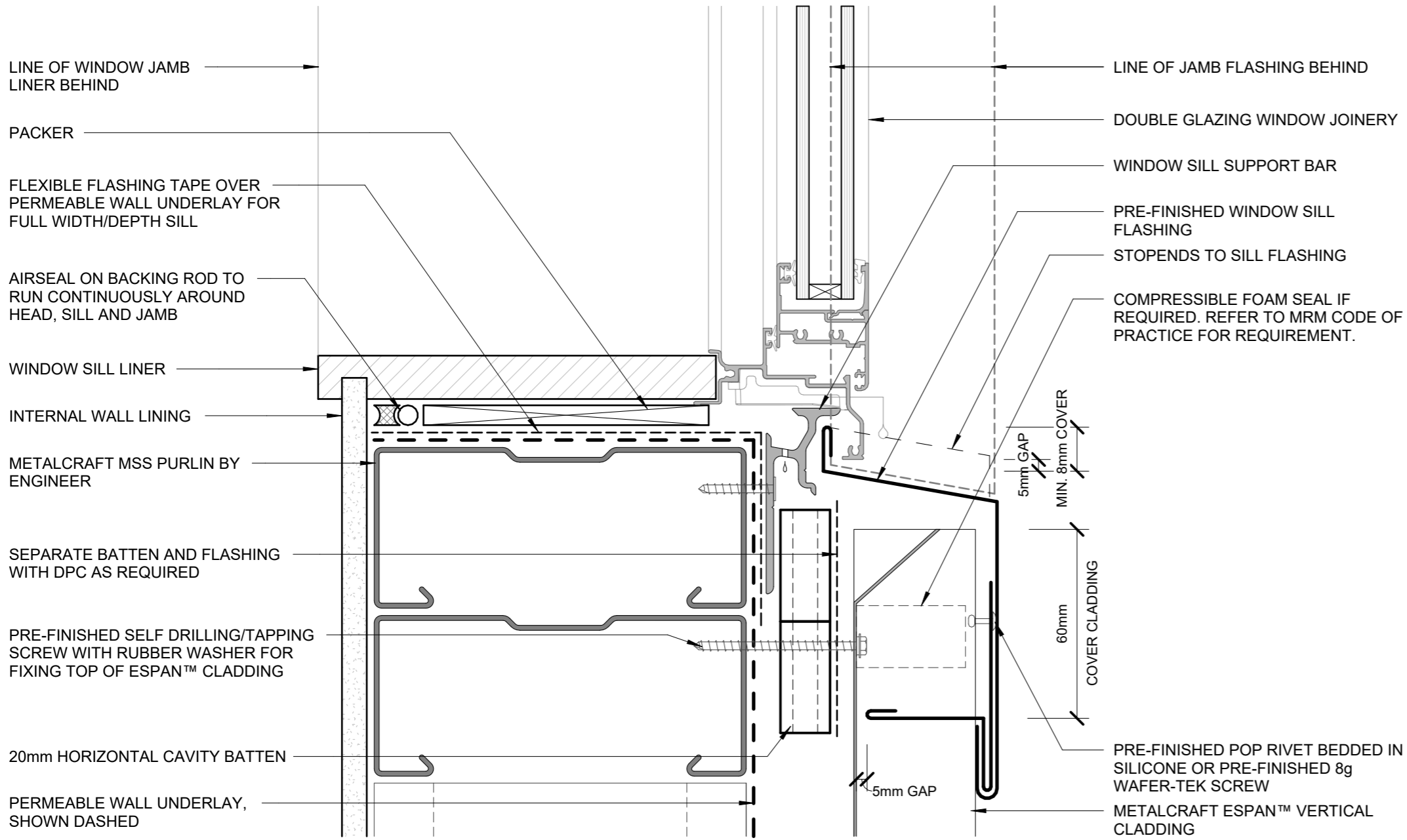
MIN. 60mm COVER

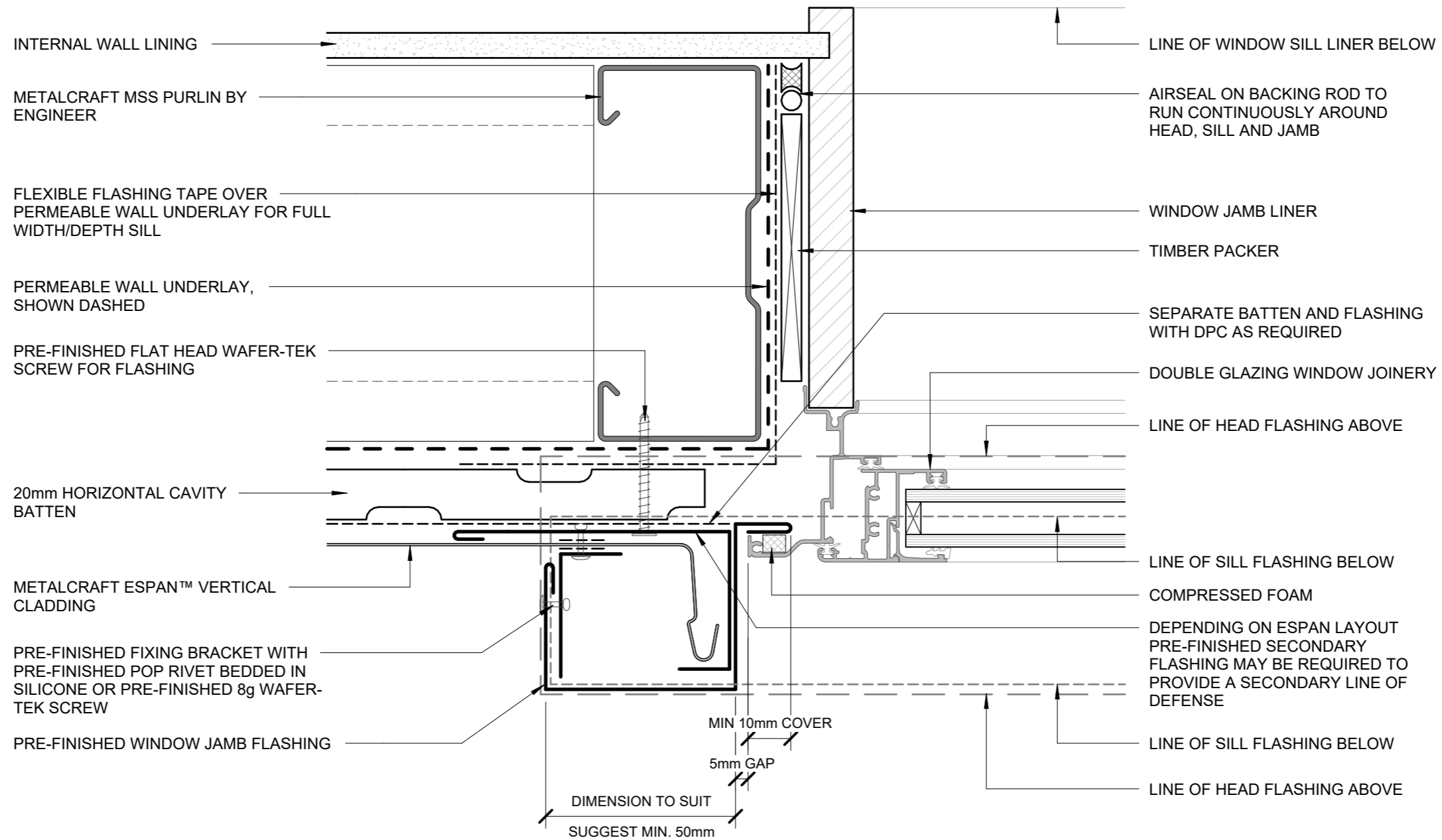
DRIP EDGE TO CLADDING

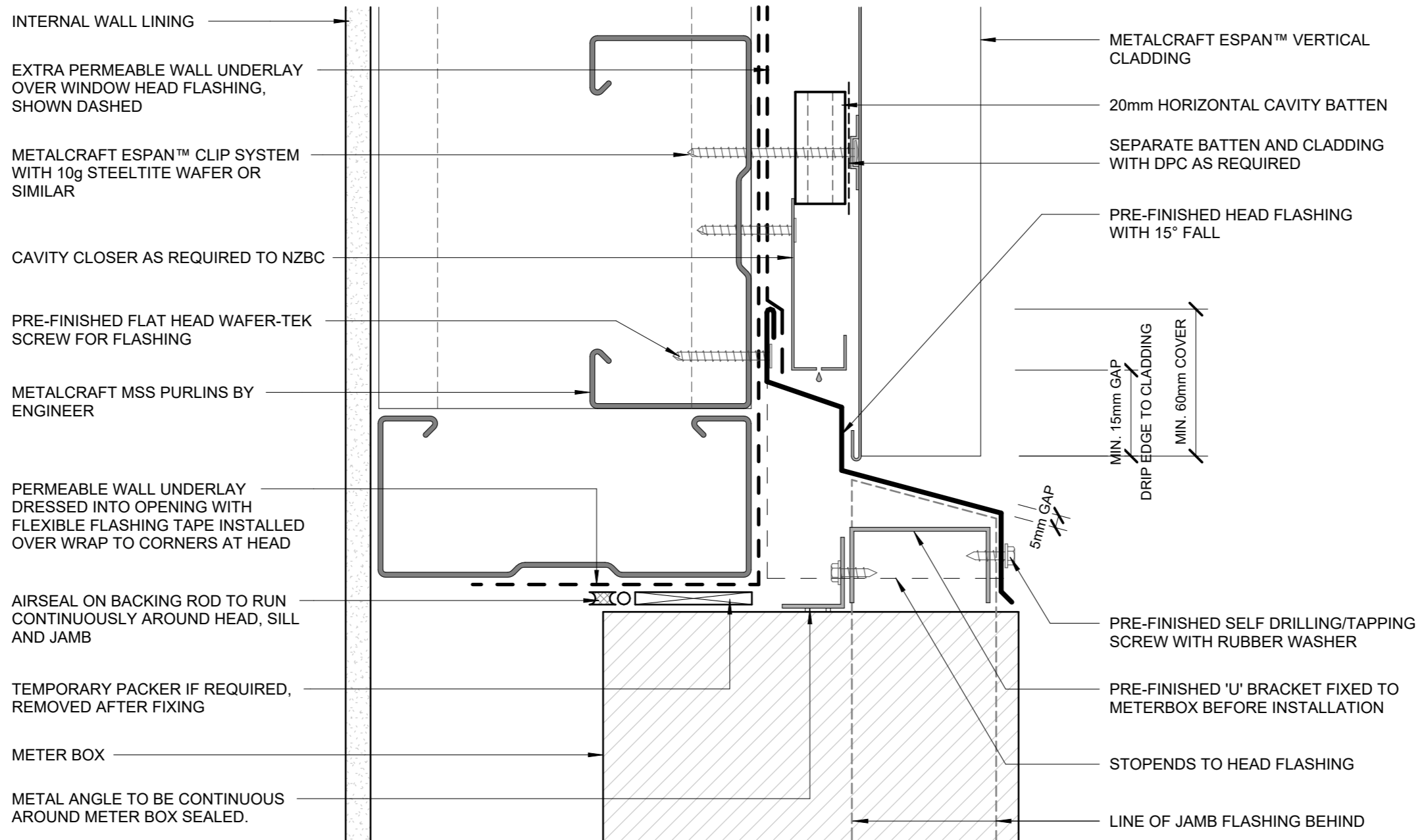
5mm GAP

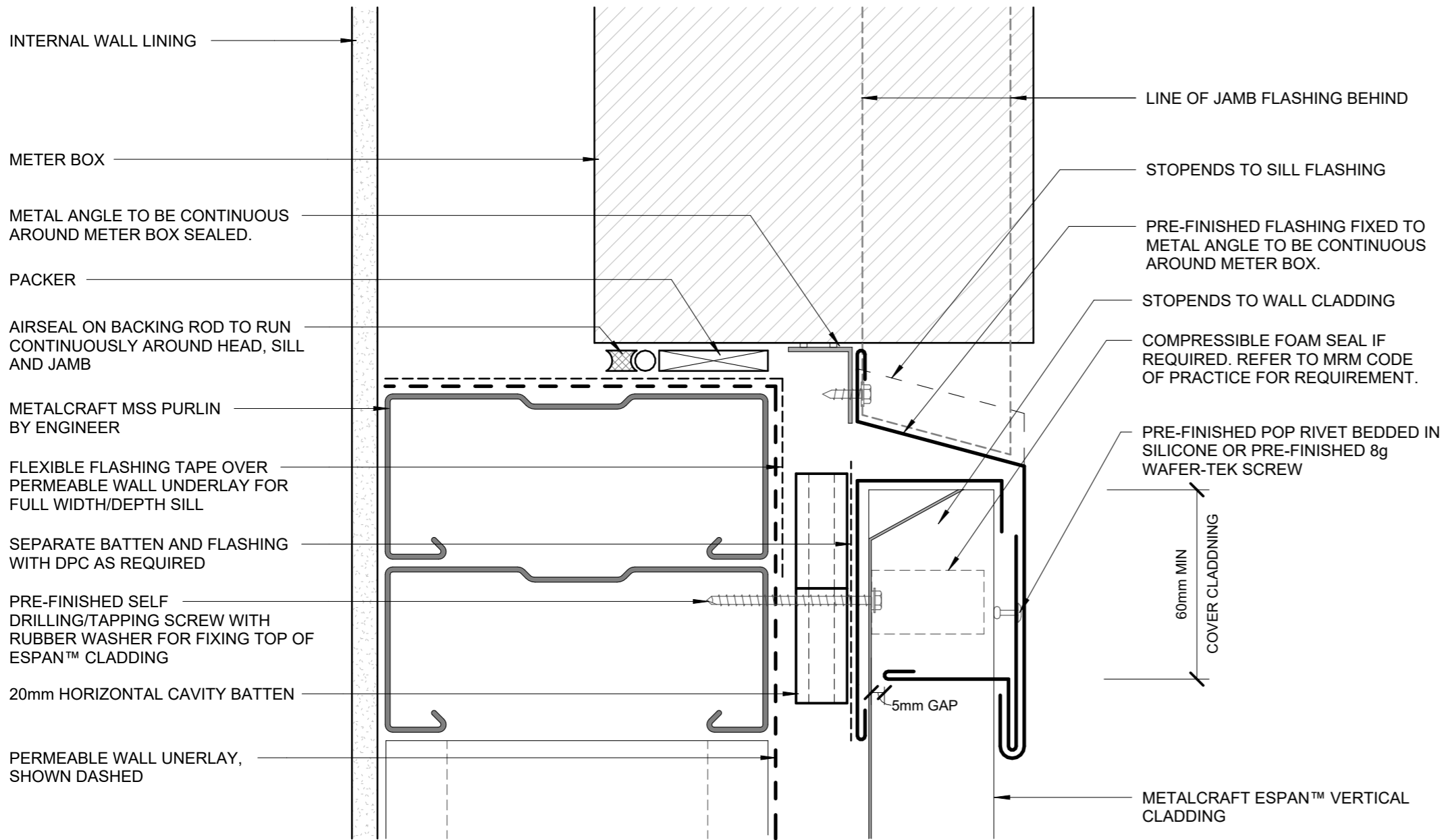
MIN. 10mm COVER

DIMENSION TO SUIT SUGGEST MIN. 50mm

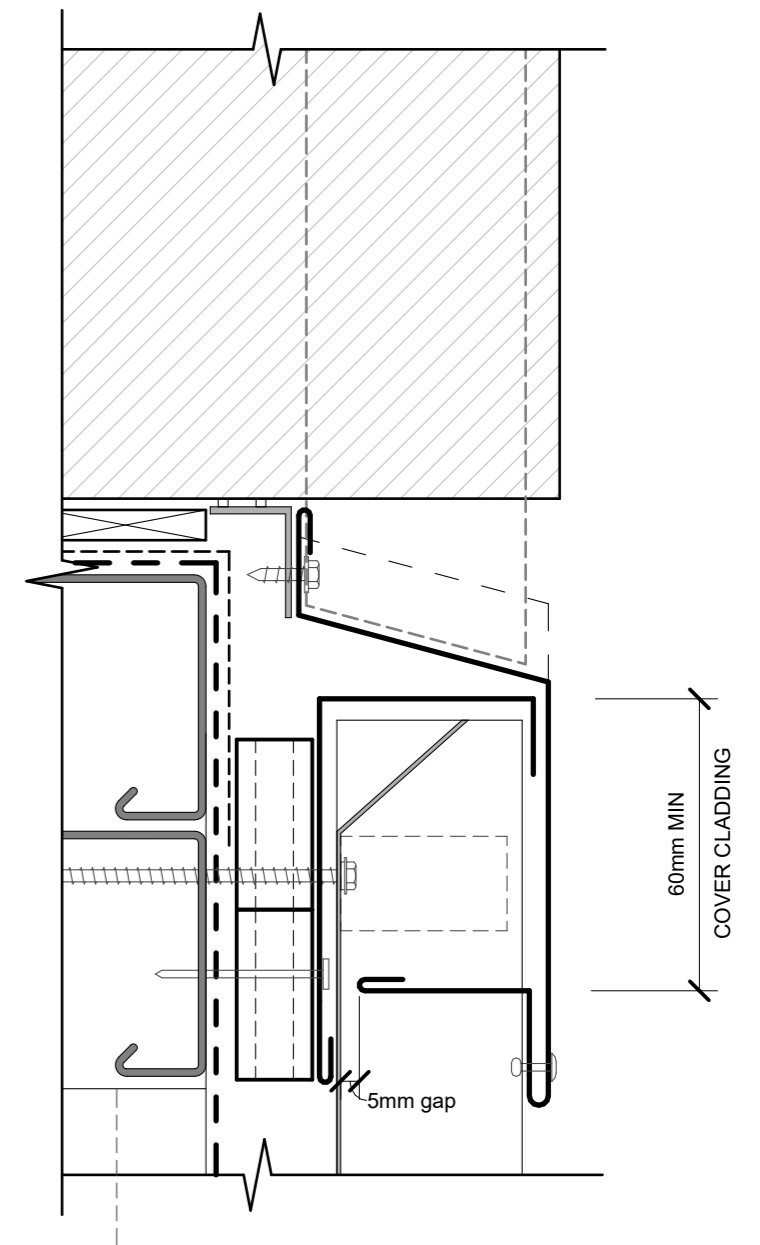


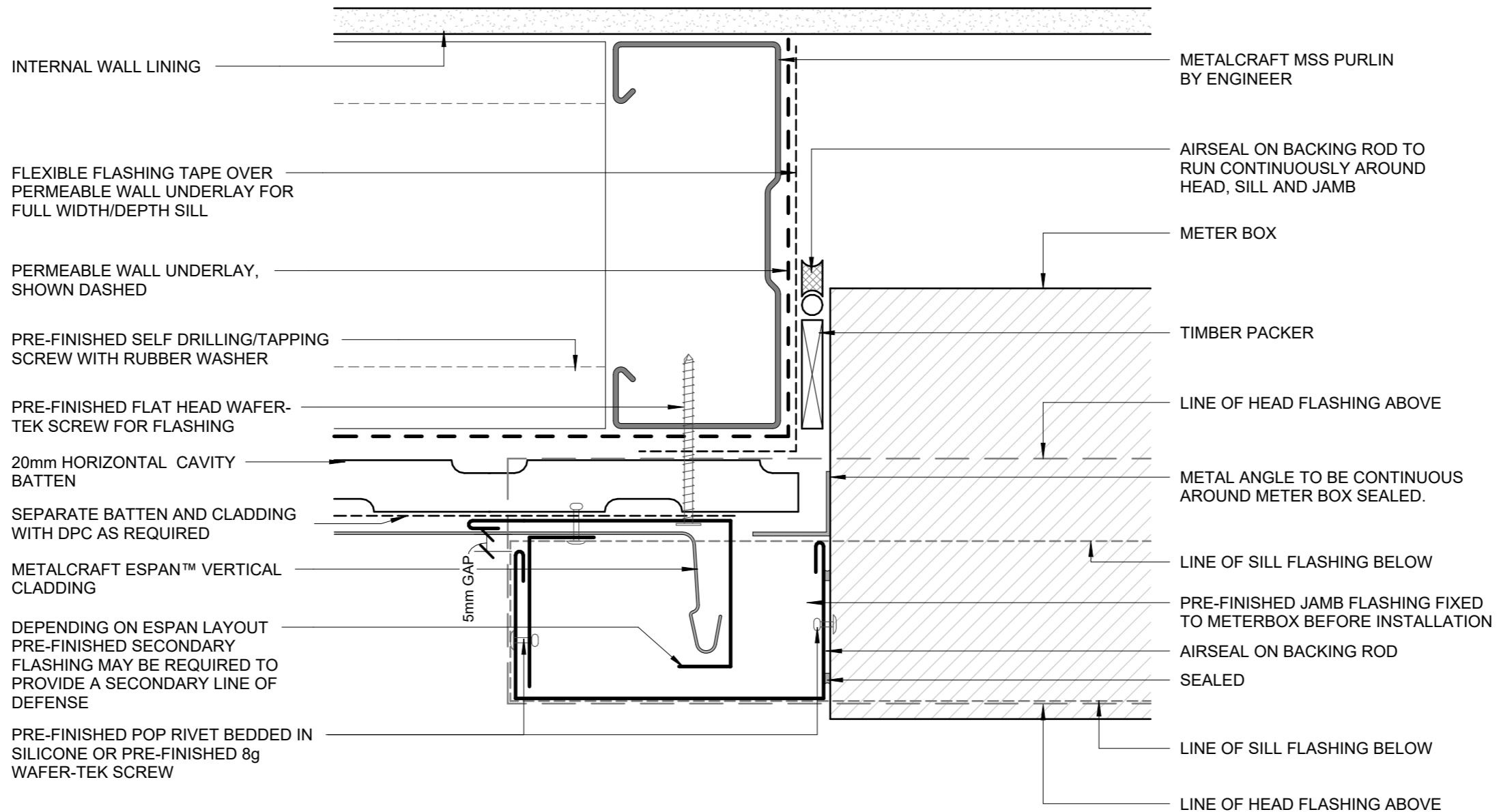


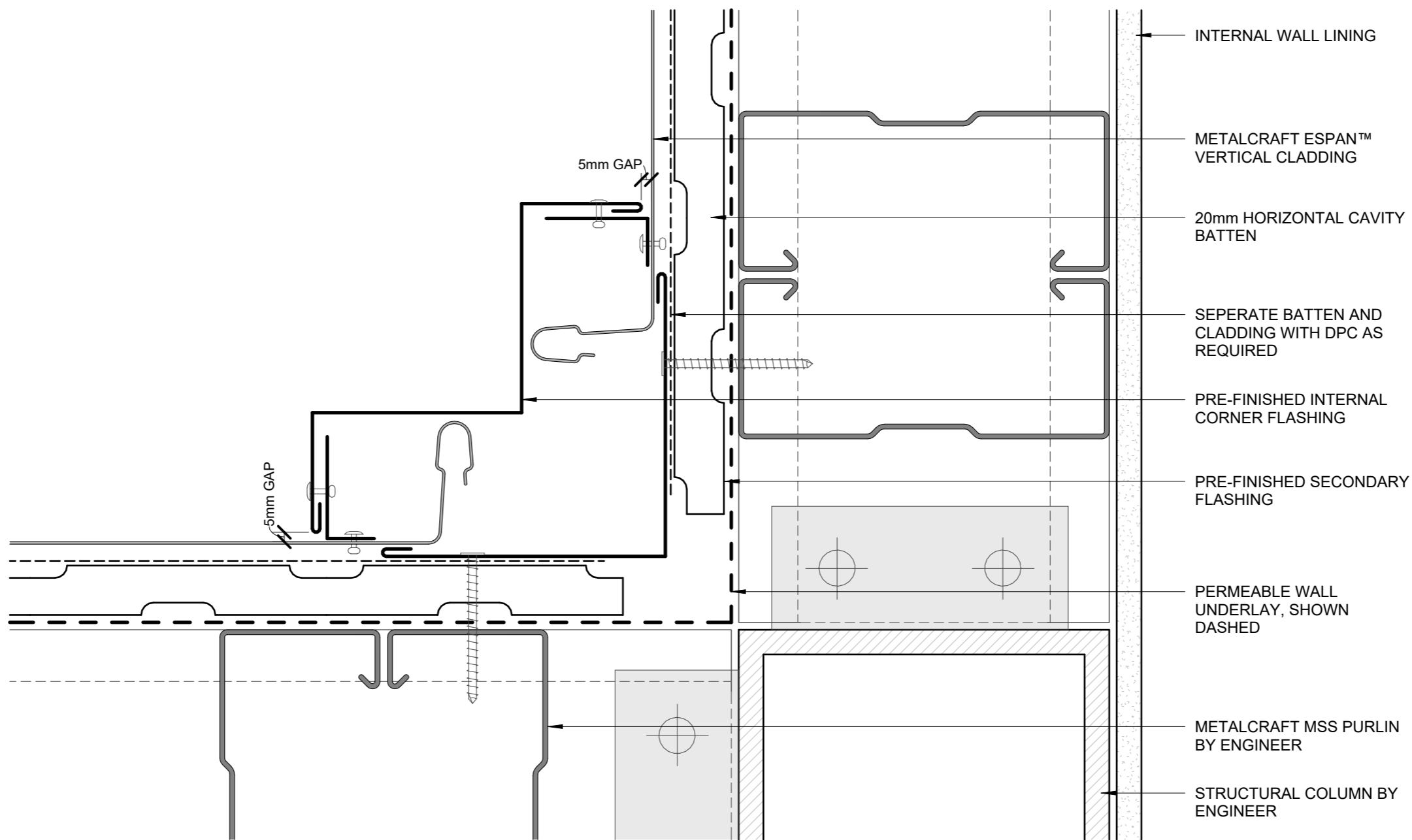




ALTERNATIVE OPTION







INTERNAL WALL LINING

METALCRAFT ESPAN™
VERTICAL CLADDING

20mm HORIZONTAL CAVITY
BATTEN

SEPERATE BATTEN AND
CLADDING WITH DPC AS
REQUIRED

PRE-FINISHED INTERNAL
CORNER FLASHING

PRE-FINISHED SECONDARY
FLASHING

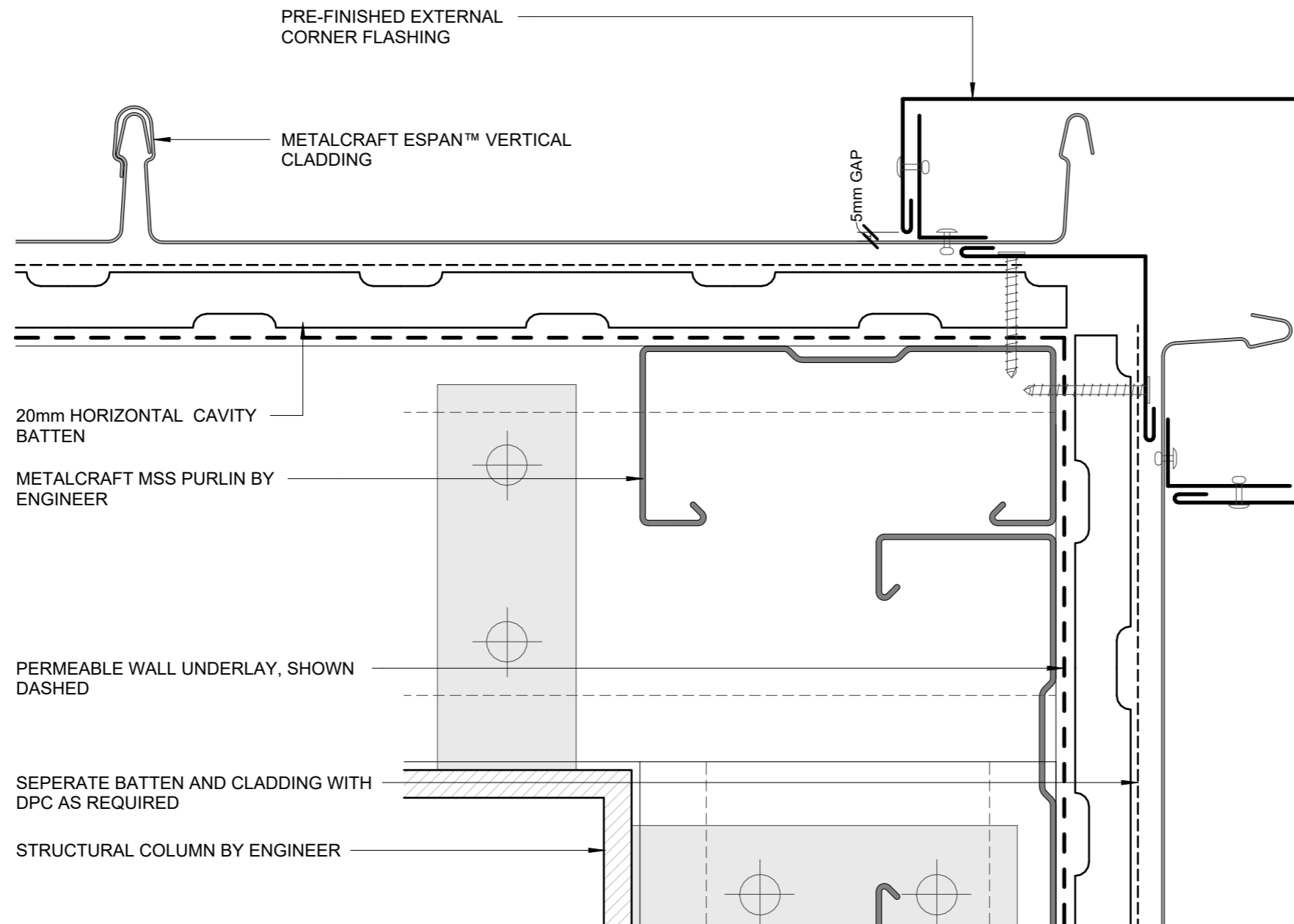
PERMEABLE WALL
UNDERLAY, SHOWN
DASHED

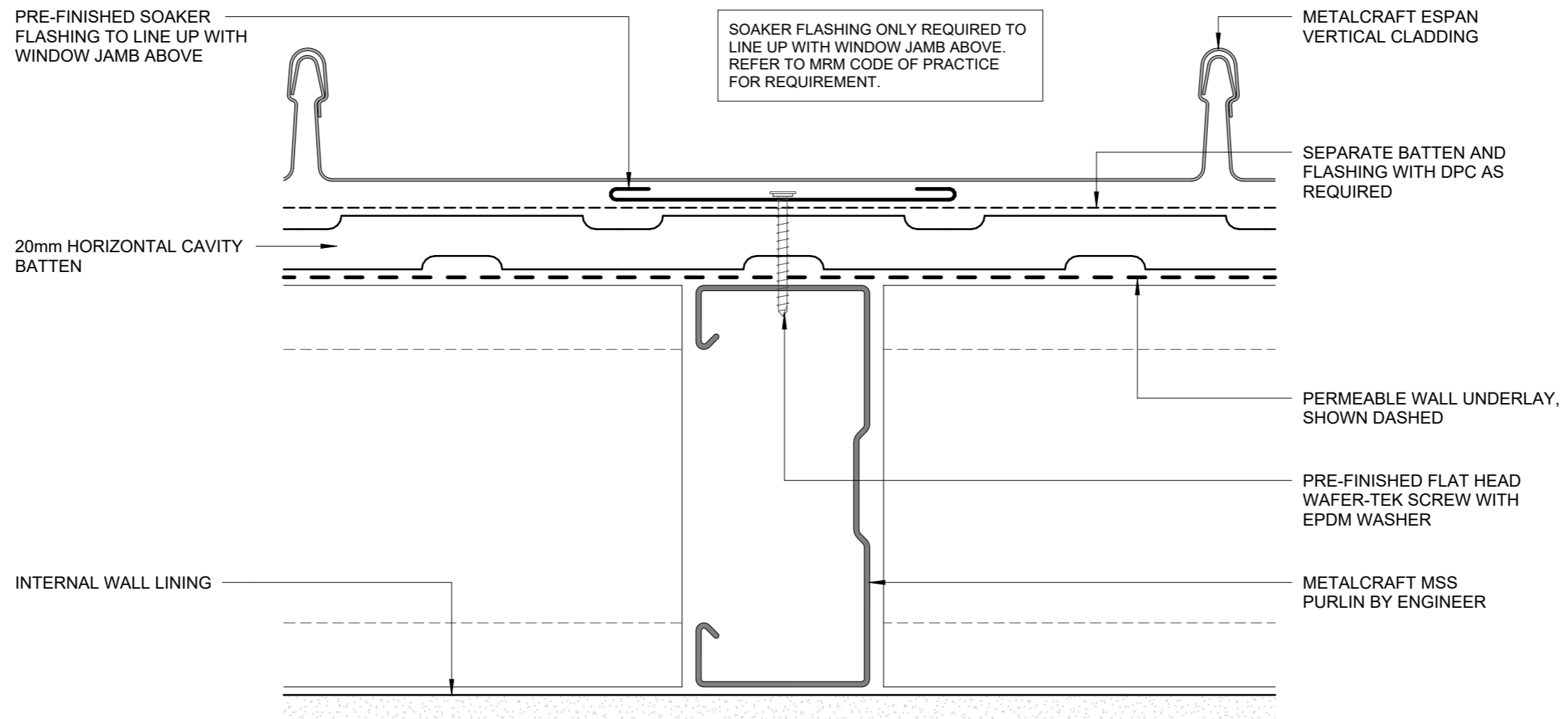
METALCRAFT MSS PURLIN
BY ENGINEER

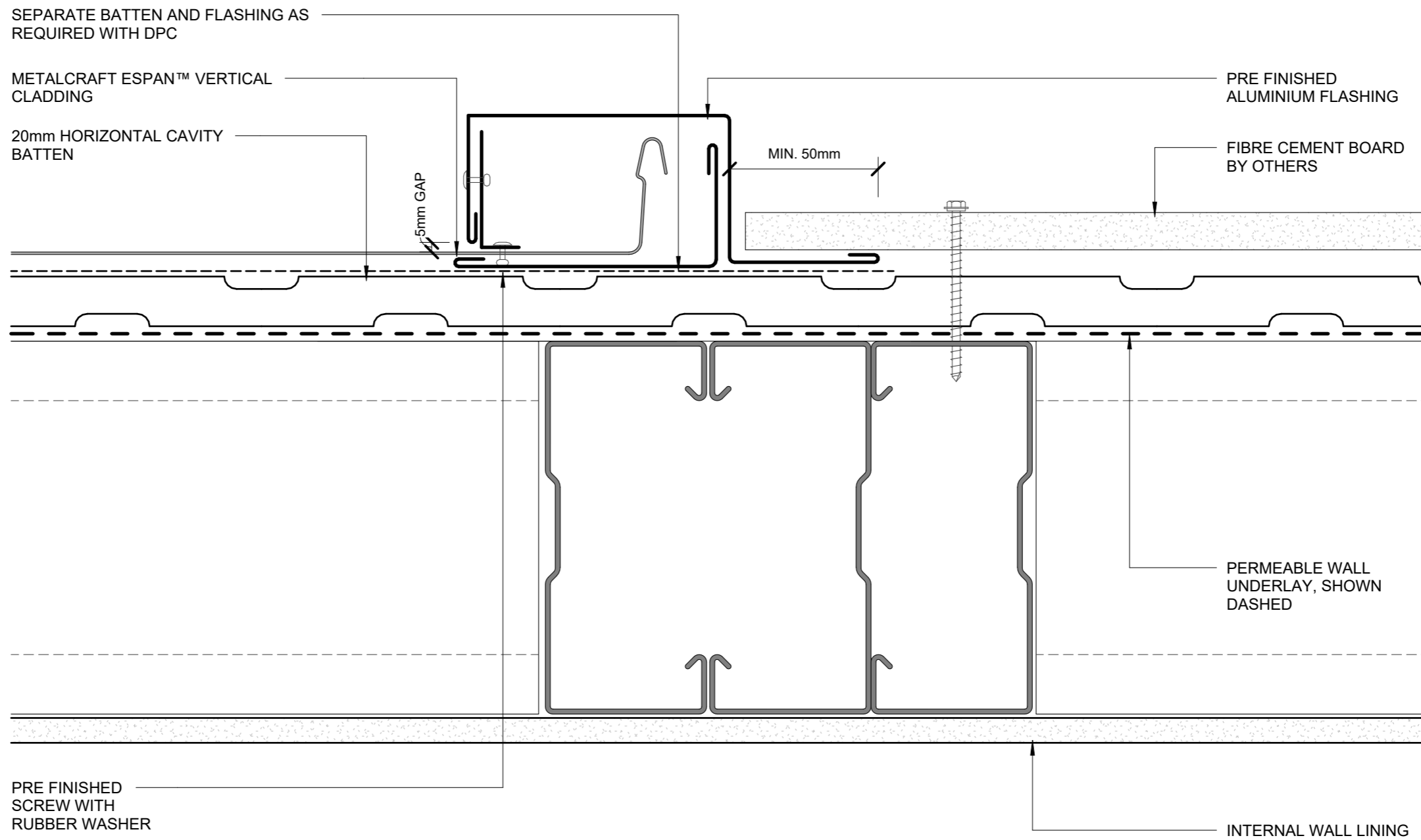
STRUCTURAL COLUMN BY
ENGINEER

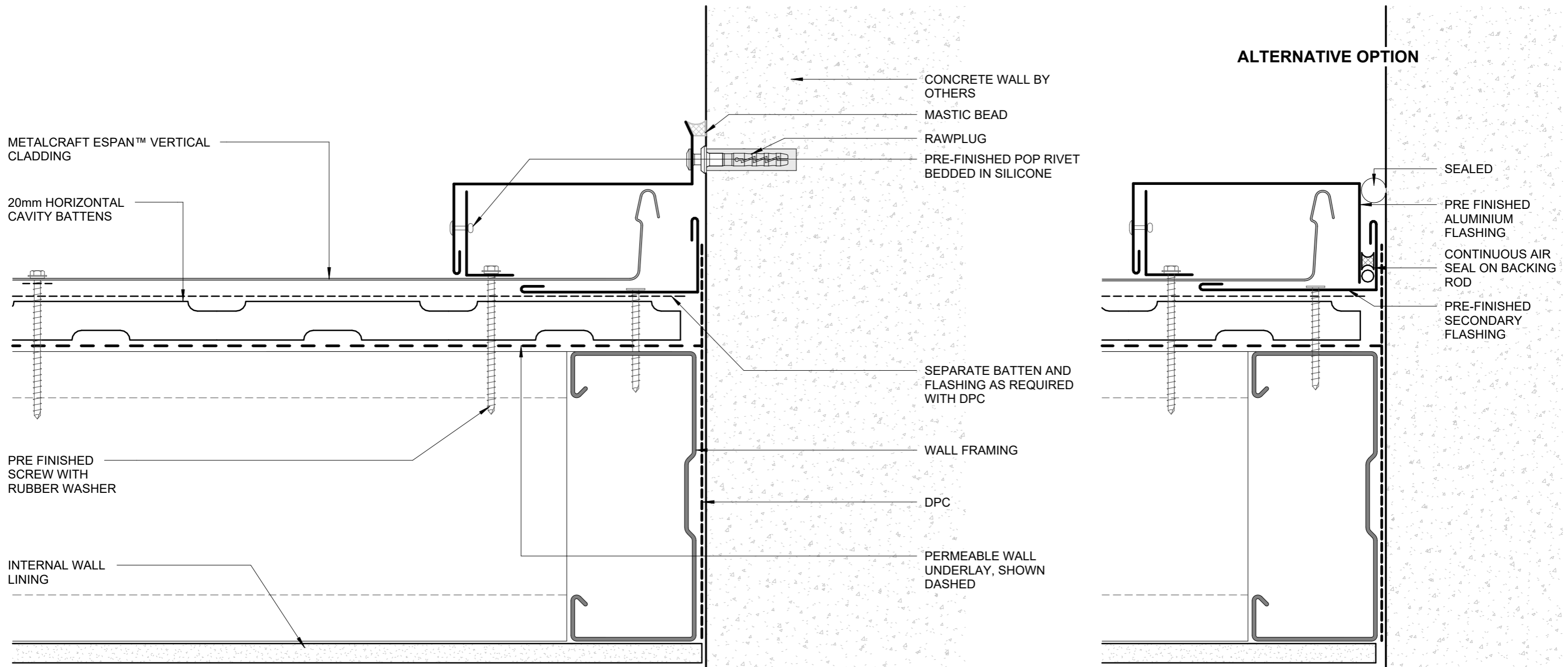
5mm GAP

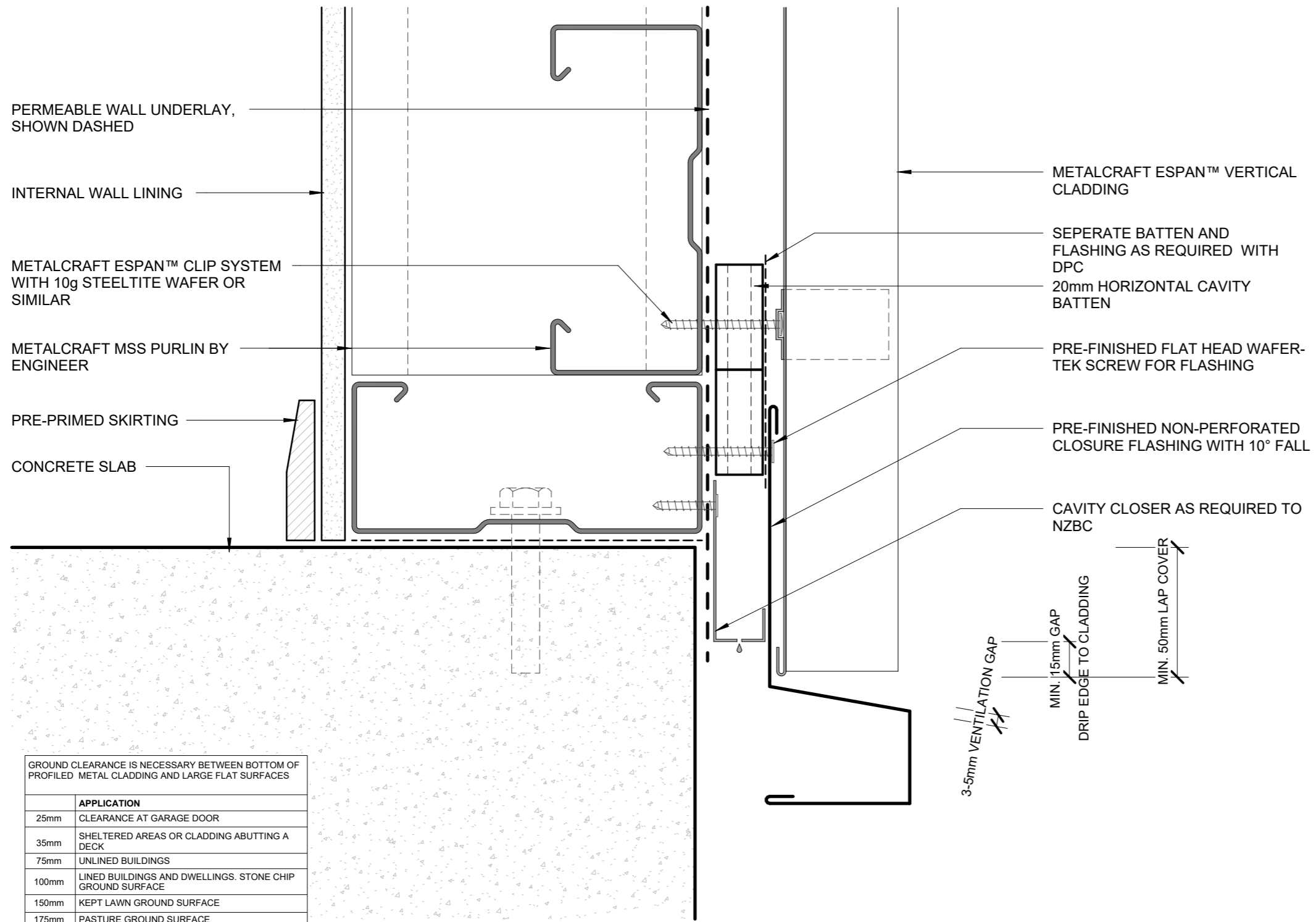
5mm GAP











BOTTOM OF CLADDING (FLUSH)
COMMERCIAL VERTICAL CLADDING

Espan 340® / 470®

Rev. 3.0

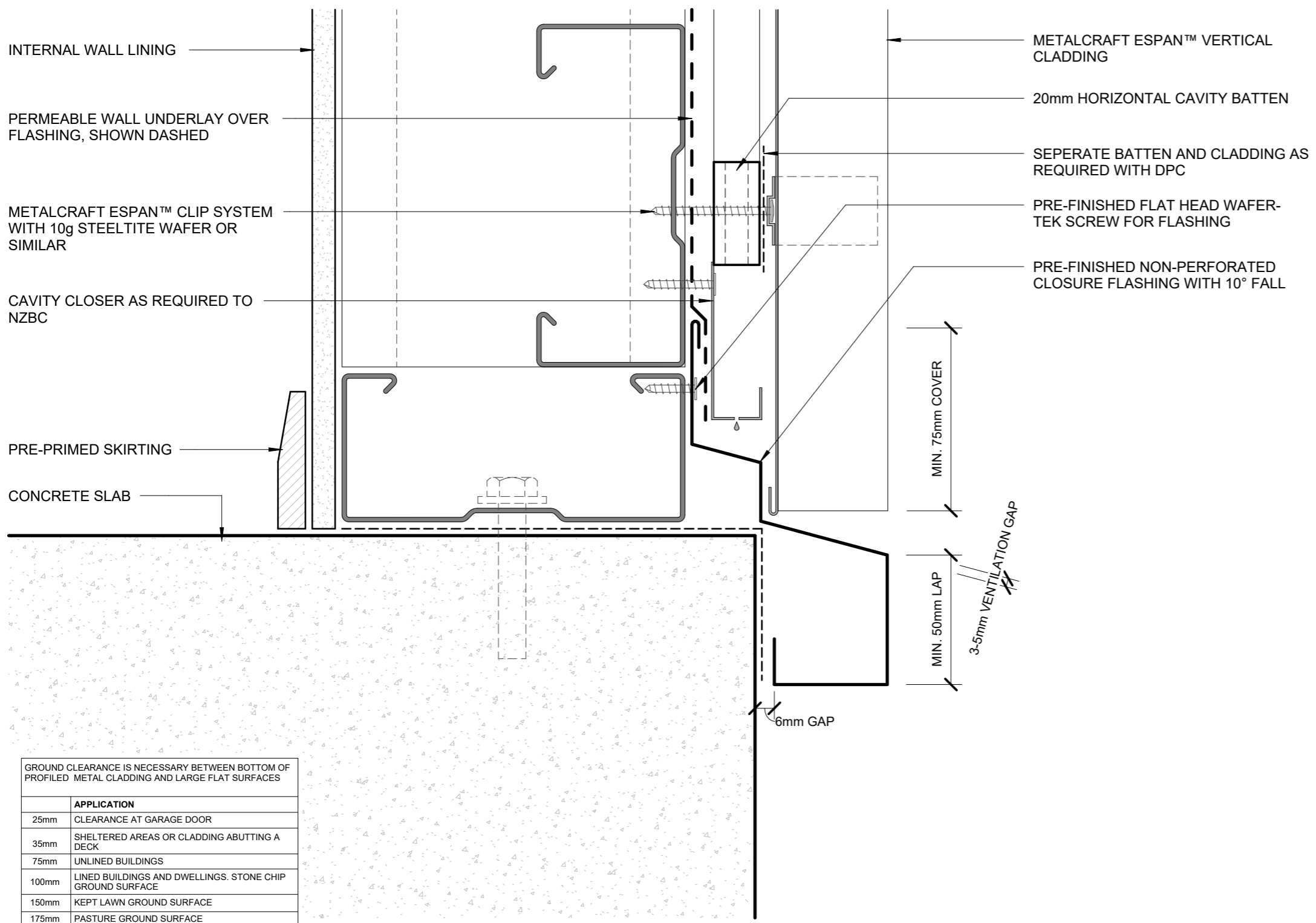
Reference CVEP

Date DEC 2024

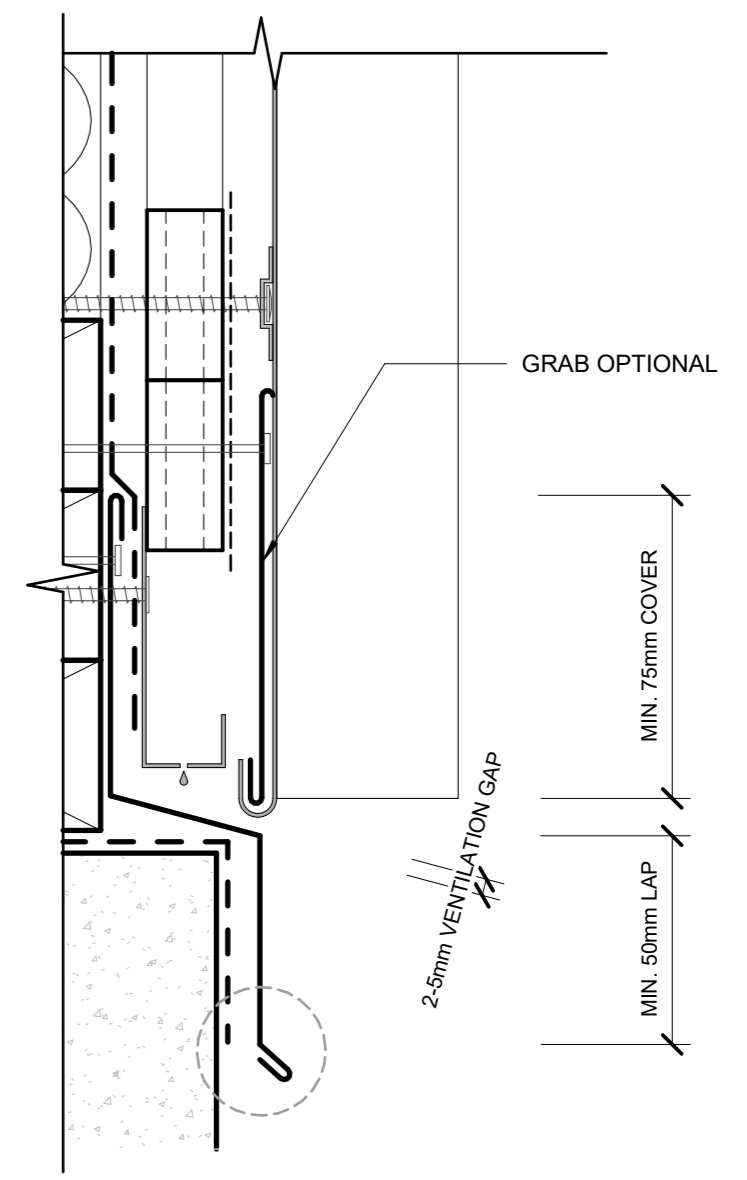
Scale 1 : 2

Sheet

E 18



ALTERNATIVE OPTION



GROUND CLEARANCE IS NECESSARY BETWEEN BOTTOM OF PROFILED METAL CLADDING AND LARGE FLAT SURFACES

	APPLICATION
25mm	CLEARANCE AT GARAGE DOOR
35mm	SHELTERED AREAS OR CLADDING ABUTTING A DECK
75mm	UNLINED BUILDINGS
100mm	LINED BUILDINGS AND DWELLINGS. STONE CHIP GROUND SURFACE
150mm	KEPT LAWN GROUND SURFACE
175mm	PASTURE GROUND SURFACE

RECESSED WINDOW FLASHINGS

